

**Variety of programs offered
for national library week**
- see page 3

**Winterguard squad wins
second state competition**
- see page 5

**Belleville's finest enjoy
75th annual P.B.A. ball**
- see page 8

The Belleville Times

Serving Belleville Since 1909

Thursday, April 4, 1985

35¢

Only 1,936 voters turn out

Budget hearing set for April 9

Township residents will get a chance to voice their opinions about the municipal budget at a public hearing Tuesday, April 9, at 8 p.m. in town hall.

The \$15.6 million budget, which reflects a 6.5 percent cap, represents a five-point increase. The budget, if approved, will raise township taxes 5 cents on every \$100 of assessed property value, bringing the tax rate to \$1.65.

The increase was due to a 7 percent salary increase recently given to township employees, including police and firefighters.

School board will meet Monday

The Belleville Board of Education will conduct its annual organization meeting Monday, April 8, at 8 p.m. at the board complex, 190 Cortlandt St.

The board will meet in private session immediately following the organization meeting. A special public business meeting will be conducted afterward at which time an administrator for the Saturday Academically Talented Program will be selected.

Zoning board chairman resigns

The resignation of Joel Pisano as zoning board chairman became effective this week.

A question of conflict of interest arose because Pisano, an attorney, is representing a client opposing the blight declaration of Washington Avenue. His client is the Pigninelli family who owns Garden State Pet Supply on William Street.

"I do not believe there is a conflict of interest," Pisano said, "but I resigned because I have a professional responsibility to represent my client."

Pisano had been a member since 1979, having been the board's chairman for the past three years.

New computer system approved

Commissioners approved a bond ordinance to provide for the acquisition and installation of a new computer system for the township.

The commissioners appropriated \$250,000 and issued \$238,000 in bonds or notes for financing part of the cost.

Zoppi and Cappello win board seats; voters approve \$17.7 million budget

By Michelle Jeannotte

Belleville voters approved the school board budget Tuesday for the second time in the past three years and voted in an incumbent and one newcomer.

Incumbent Ernest Zoppi was elected to a three-year term, receiving 1,348 votes out of the total 1,936 votes cast. Dr. Joseph Cappello came in second with 1,266 votes, followed by Kevin Kennedy with 517 votes.

School Board Business Administrator Edward Appleton said the biggest showing came from School 5 with 252 total votes. Both Zoppi and Cappello garnered high vote totals from School 5, receiving 178 and 200 votes, respectively. Zoppi's biggest showing came from School 4, Appleton said.

"It's a wonderful feeling to be a winner," Ernest Zoppi said. "I also believe that the passing of the budget shows that the people have confidence in the board. We needed that."

Cappello, the new member on the school board, also felt strongly about the budget, saying it felt especially good



Ernest Zoppi

coming in with an approved budget.

"I believe we did a good job for the first time out," he said. "I told my supporters that they should be proud of themselves because they are the ones who helped bring about this excellent showing."

Cappello said that he has no major plans for the board at this time and that he would just like to become familiar with the workings of the school board and



Joseph Cappello

its members.

Despite the approval of the budget by the two new board members and the voters, Kevin Kennedy believed the passage of the budget was not favorable.

"Passing the budget was a big mistake on the part of the public," he said. "Salary increases are at 8 percent now and they are only going to increase."

Kennedy said he plans to run again next year and that he will continue to keep an eye on the

board's actions.

The majority of voters, however, appear to be satisfied with the board's actions, passing the \$17.7 million budget by 1,539 to 1,261 votes. This was only the second time in 22 years that township voters approved the school board budget, defeating last year's \$16.9 million budget by a narrow margin.

The vote went as follows: current expenses, 791 yes votes and 620 no votes; capital outlay, 748 yes votes and 641 no votes.

The current expense portion of the budget is estimated at \$16.5 million and includes teacher salaries and operation and maintenance costs of buildings. The capital outlay portion, which includes an appropriation of \$124,558, would provide monies for school repairs, including the reroofing and repainting of the high school.

The budget increase raises property taxes 5 cents for each \$100 of assessed value, bringing a \$25 tax hike to a taxpayer who owns property assessed at \$50,000.

School board approves summer school program for township students, grades 8-12

By Michelle Jeannotte

The board of education recently approved a proposal to reintroduce a summer school program for students in grades 8-12 who fail a course during the school year.

The proposal, presented by Assistant Schools Superintendent Michael Lally last month, provides for a limited summer school program for Belleville residents only. Lally said that the program would provide remediation for those students who have had a previous failure in an academic course.

The courses tentatively offered will include English, social studies, math, science and physical education, but modifications may be made depending on the needs of the students, Lally said.

"We can't offer a course for one or two students," he said. "The courses offered will be determined by how many students need a course."

The program, which was last offered 10 years ago, will be conducted from June 28-Aug. 9. The six-week program will consist of two two-hour sessions, five days

a week, providing a student with the required 60 hours per subject.

The program will be free of charge to Belleville residents only, Lally said, adding that he proposed a \$20,000 budgetary cost for the program.

"In past years, we were unable to provide a remedial summer school program because of budgetary cutbacks," he said, adding that students had to go out of the district and pay tuition costs. He said the majority of students attended Queen of Peace in North Arlington.

Students entering the summer school program must have a principal's approval, Lally said.

The budget for the program will provide salaries for an administrator and staff members, he said. An administrator for the program will be selected by the board of education within the next few weeks.

Teachers for the program must be certified in the courses they will be teaching, Lally said, adding that selections will be made within the school system before going out of the district.

Matters in Brief

BHS band will march in festival

The Belleville High School Marching Band has been accepted to participate in the 58th Shenandoah Apple Blossom Festival in Winchester, Va., May 2-5.

The 35-piece band, under the direction of Andrew Silbert, will participate in the Grand Feature Parade and the Field Marching Band Competition. More than 125 high school and junior high school bands from more than 20 states and the District of Columbia annually participate in the festival band competitions.

The "Best of the Bloomin' Festivals" traditionally hosts nationally known celebrities in the fields of entertainment and sports. The four-day event attracts more than 250,000 visitors annually and 25,000 participants.

School board accepts resignations

The Belleville Board of Education accepted the resignations of five teachers at its Monday night meetings.

Resignations were accepted by Patricia Pfeil, School 5 teacher, Christine Gizzo, School 5 basic skills instructor, and Michele Volpe, School 8 basic skills instructor. All three are presently on child-rearing leaves of absence.

Resigning also are Anita Schulz, School 8 teacher, and Virginia Stackfeth, School 7 teacher, who began teaching in the school system 32 years ago.

Police find man's body on Rt. 21

A Passaic man was found shot to death in an abandoned van set on fire on Route 21 last week.

The body of 42-year-old Charles D'Amiolo was found Thursday night on the southbound shoulder. He was an apparent victim of a gangland slaying, police officials said.

Detective Capt. Raymond Kimble and Detective Lt. Michael Petrillo of Belleville are in charge of the homicide investigation along with Passaic police officers and investigators from the Essex County Prosecutor's Office.

Sites for new park facilities are planned

The board of commissioners conducted a public hearing last week for site recommendations and uses for recreation facilities

funded by the state's Green Acres Bond Act.

Additional facilities were planned for the stadium com-

plex, but the Green Acres Bond Act does not provide funding for buildings, said Mayor Michael Marotti.



New Police Officer - William Palatella (left) was sworn in as a police officer last week by township clerk Mary Lou Hood as Police Chief George Lister looked on. The 20-year-old resident of Naples Avenue became the 85th police officer on the township's force. Palatella, who began attending the police academy last week, will complete his training in June.

"We planned to build a field house and fix up the second floor of the stadium building for a meeting room, but Green Acres turned us down," he said.

Marotti added that he would still like to see improvements made at the stadium such as tennis courts and fitness centers. However, if Green Acres funding is used, the township cannot keep out-of-towners from using the facilities.

"When people hear that we want to build a park in their backyards, they don't want it because more people will be coming in," he said. "They want a nice quiet neighborhood."

Marotti said that although he doesn't know what is going to be done, he and William Katterman, a grant consultant with Bruno Associates, will be looking into possibilities.

The Green Acres Bond Act provides loans at 2 percent interest over 20 years, he said, adding that block grant monies can also be used for such projects.

Marotti cited the park on William Street as a project funded by a community development block grant. Improvements being made to the park, expected to be completed this year, include new asphalt and benches.

Parenting seminars set at Belleville libraries

The Belleville Inter-Agency Council is sponsoring a series of seminars at the Belleville Public Library which focuses on parenting concerns.

Charlotte Cohen, M.S.W., will lead a seminar and discussion on "Peer Pressure and Adolescence: A Guide for Parents" Monday, April 8 at 7:30 p.m. This seminar will focus on techniques for parents to utilize in coping with their teenagers and the influences of peer pressure. Cohen is a psychiatric social worker with Community Mental Health Services for Belleville, Bloomfield and Nutley.

"You and Your Aging Parent" will be the topic of a seminar being presented Monday, April 15 at 7:30 p.m. by Barbara Furnell, M.A., C.R.C., and Joanne Gorczyca, ACSW. This seminar is designed to help adult

children of aging parents to define their responsibilities, meet their own needs, and explore options and resources available.

Furnell is director of the Friendly Visitors Program of Community Mental Health Services for Belleville, Bloomfield, and Nutley, and Gorczyca is a supervisor in social services at Clara Maass Medical Center.

Dr. Anthony P. Chirico, director of Special Services of the Belleville Public Schools, will outline and discuss services provided in the school district for the handicapped preschool child Tuesday, April 2 at 10 a.m. in the main library and on Wednesday, April 10 at 10 a.m. at the Silver Lake branch of the library.

For further information and registration, call the Belleville Public Library at 759-9200. There is no fee for any of the seminars.

Home, school association nominates slate of officers

The nominating committee of the Belleville High School Home and School Association has nominated the following slate of officers for the 1985-86 school year: Anna Marie Perna, president; Joseph Ciccone, honorary vice-president; Annamaria Puglio, first vice president; Susan Iannini, second vice president; Lorraine Leming, recording secretary; Frank Davies, corresponding

secretary; Lee Anne Gallo, treasurer.

Any further nominations may be submitted, in writing, to Annamaria Puglio, c/o Belleville High School, 100 Passaic Ave. by Friday April 12.

All nominees will be presented to the general membership at the home and school meeting Thursday, April 18 at 8 p.m. in the school's auditorium.

Belleville Business Bureau

By Howard Halpern

The proposed redevelopment of Washington Avenue will have a major impact on your business regardless of your business location in town. Since much of the information has been in the form of "hear-say" and misleading innuendos, the Belleville Chamber of Commerce will conduct a fact-finding forum to answer all of your questions on the subject of redevelopment, Wednesday, April 17, at 7 p.m. at Fawcett Memorial Presbyterian Church, 444 Union Ave.

The forum will consist of two authoritative panels, each with an alternate method of achieving redevelopment.

You, the businessperson, will have the opportunity to ask the respective panels questions concerning this vital matter. Members of the board of commissioners will be present as observers to help render their final decision.

Only business or commercial property owners in Belleville will be admitted. Proper credentials, such as a business or identification card must be presented at the door.

If you are concerned about the future of your business or business property, it is imperative that you attend this question and answer forum.

Angela Ferruggia promoted at Prudential Insurance Co.

Angela M. Ferruggia of Belleville has been promoted to section supervisor in the Human Resources Department at The Prudential Insurance Company, Newark.

Ferruggia joined the company as a service clerk in the debit records and retention division in 1984. She transferred to

the Office of Servicemen's Group Life Insurance as assistant supervisor four years later. In 1981, she transferred to the Human Resources Department as a profile coordinator, the position she held until this promotion.

Ferruggia is a 1974 graduate of Belleville High School.



Art Exhibit - Lynn Dancy, L.P.N. of Belleville, left, of Montclair Community Hospital, admires an unusual oil painting by artist Irene Spiegel. Spiegel's work will be on display at the hospital, 120 Harrison Ave., Montclair, during April.

Another DeCarlo Sale!



Clifton Colonial
This move in condition home was recently sold by Ann DeCarlo Agency, Inc.

Ann DeCarlo

AGENCY/REALTOR
880 BROAD ST., BROOKDALE, BLOOMFIELD
748-5288



WATTERS DAIRY-DELI

50 River Rd. No. Arlington
991-7716

Formerly of Belleville

A Complete Line of
Fine Welsh Farm Products
PLUS:

A Full Line
Of
Thumann's
Meats

Homemade
Soups
Sandwiches
Coffee To Go

OPEN 8 A.M. - 10 P.M. 7 DAYS

"Where Friendliness Is
A Family Tradition"

Dave Watters
Mgr.

Financial seminar offered April 22 at public library

"How to Build Your Portfolio," a seminar designed to help you manage your assets more effectively, will be presented by account executives Gail Miller and Michael Rubinstein Monday, April 22 at 7:30 p.m. at the library on Washington Avenue.

The seminar will be geared toward educating the participants on suitable investments for their own individual needs. It will include discussions of various investments that generate income, plus investments that tend to protect existing capital, such as Municipal Bonds, "Ginnie Maes," and Zero Coupon Bonds.

There is no charge for the seminar. To register, call 843-0400.

Pharmacy Footnotes



Vincent
Cozzarelli
Reg. Ph.

POTENCY

All medicines vary in potency. This means that it takes a smaller amount of some drugs to produce the desired effect than with others. Doses are usually divided into three levels: "subthreshold doses," "threshold doses" and "ceiling doses." Doses that produce no effect at all are called subthreshold doses. A subthreshold dose is the amount necessary for a drug to have any effect at all. Ceiling doses are those where the drug no longer produces any further desired effect. Doctors prescribe specific drugs in specific doses for specific reasons. It is how much, how often and how long a drug is taken that produce the desired results.

One of the many reasons people come to us is our prompt service. When you have a prescription bring it to ROSSMORE PHARMACY, 338 Washington Ave., 759-1956, 759-1968. Stop by soon and see our selection of gift items for Easter, as well as greeting cards, Russell Stover candy. Open: Daily 9am-10pm, Sundays 9am-5pm. We hope you have a very happy Easter holiday.

HANDY HINT:

Doubling up on medication will not necessarily bring results any faster.

Your Movie Rental Store For '84

NO CLUBS, NO MEMBERSHIP FEE

NOW SHOWING!

GONE WITH THE WIND
WOMAN IN RED
LITTLE DRUMMER GIRL
IRRECONCILABLE DIFFERENCES
EVIL THAT MEN DO
BACHELOR PARTY
TOY SOLDIERS
CRIMES OF PASSION
REVENGE OF THE NERDS
STAR TREK III
ONCE UPON A TIME IN AMERICA

WEEKDAY SPECIAL
3 Tapes for 2 Days... **\$8**

Rent any Tape
Tues.-Thurs. ... **\$1.89**

- All Ratings G-XXX
- VHS Rent and Repair VCRS
- Over 1500 Movies
- Videotaping For All Occasions

Coming Soon: Oh God You Devil, Karate Kid, Supergirl, Ninja 3, Terminator

Instant Video
186 Main Avenue
Passaic Park • 778-4751

Open Daily till 9 p.m.

1885 1985

100 Years of Uninterrupted Dividends

GIVE THE TAX

WITH FIRST DeWITT's High Rate IRA*

*Individual Retirement Account

You cut taxes and SAVE!
You get a HIGHER RETURN on savings
Your funds increase FAST
You get total SECURITY!
And you retire RICH!

OPEN AN IRA NOW AND SAVE ON 1984 INCOME TAXES

FIRST DeWITT SAVINGS
AND LOAN ASSOCIATION

BELLEVILLE • BLOOMFIELD & CEDAR GROVE

TELEPHONE **751-2800** ALL OFFICES



Bring Out the Band - The seventh and eighth grade band performed for board of education members and audience members at the board's meeting last week. The band, led by Robert Wing, performed such musical pieces as "Southern Nights," "To All the Girls I've Loved," "1812 Overture," and excerpts from "The King and I." - Photo by Michelle Jeannotte.

Joan Samsel's drawing workshops scheduled April 16 at public library

Joan Samsel who recently opened an art studio in Belleville

will be conducting two drawing workshops at the Belleville Public Library Tuesday, April 16.

She will conduct a drawing workshop for grades 3-8 from 3:30 - 5 p.m. and a drawing workshop for high school students and adults from 7:30 - 9 p.m. Those interested in attending should call the library at 759-9200.

Samsel will also be exhibiting at the library during the month of May. She is a figurative artist specializing in portraits and the

study of the human figure and natural form.

She received her associate's degree from the Academy of Fine Arts, Rome, Italy, in 1976. She also attended the Brera Fine Arts Academy in Milan, Italy. In 1982, she received her bachelor's degree in fine arts from Rutgers University.

Samsel has been in group exhibitions at the Banca di Roma, Milan, a student exhibition at the Fine Arts Academy, Rome, and has been a member of the jury panel for the National University Art Show in Newark. She will serve as a judge in the Belleville Public Library's Art Show April 20.



Joan Samsel

Joan Samsel, Belleville artist in residence at the library, will offer a drawing workshop to high school students and adults Tuesday, April 16 at 3:30 p.m. and 7 p.m.

To register for these workshops, call the library at 759-9200.

Library will celebrate library week with a variety of programs, events

In celebration of National Library Week, April 14-20, the Belleville Public Library will be providing a full week's activities.

The Silver Lake Branch Library's 20th anniversary celebration will take place, Sun-

day, April 14 featuring the Cider Mill Cloggers from 2-3 p.m. Refreshments and free admission are being provided.

On Monday, April 15, from 7:30 - 9 p.m., Barbara Purnell, MA, CRC, director of the Friendly Visitors Program, Community Mental Health, and Joanna Gerczyca, ACSW, supervisor Social Services Department, Clara Maass Medical Center, will conduct an interagency lecture, entitled, "You and Your Aging Parent." Those interested in attending should register at the library by calling 759-9200.

On Wednesday, April 17, the Belleville award winners and the state winners in the libraries in Focus Essay Contest will

receive their ribbons, certificates, and awards from 3:30 - 4:30 p.m. in the "Careers 2000," essay contest.

Jerry Fierst, actor in residence, will present "Story Telling, Story Acting," from 10-11 a.m. Thursday, April 18 and the National Library Book Awards Program will take place from 3:30-4:30 p.m. at the library.

"The Happy Kitchen," with Jerry Fierst and Luella Barclay, will present a program of yoga, good food, and health, from 7:30-9 p.m. Friday, April 19. This program is sponsored by the Friends of the Belleville Public Library. Admission is \$2 and refreshments will be served.

Art show set for April 20 at library

Registration is now being conducted for the Belleville Public Library's Indoor Art Show which will be held Saturday, April 20, 9:30 a.m. to 1 p.m.

To register, call the library at 759-9200. The show is open to adult professional and non-professional artists, as well as students in grades one-12.

Book prizes, certificates and ribbons will be awarded to the first, second and third prize winners. Four "Best in Show" winners will receive \$10 gift certificates from Yudin's on Washington Avenue. Book prizes will also be provided by Vita Vigorito, Golden Press, and the Friends of the Belleville Public Library.

Mrs. Richard Shafter, secretary of the library's board of trustees, is the chairperson for the art show.

AUTO INSURANCE PROBLEMS?

- Free Quotes
- Same Day Coverage
- No Obligation
- Personal Service

"Selling Insurance Since 1915"

Eugene J. Reilly

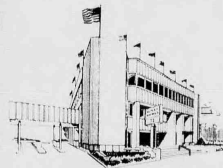
Real Estate - Insurance
Auto - Home - Life

394 Washington Ave. Belleville
759-1682

GOOD FRIDAY CLOSING

Nutley Savings' lobby, walk-up, and drive-through services will be closed Good Friday, April 5th.

Twenty-four hour Automatic Teller Machine services will be available to all MAC Card Holders.

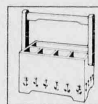


Nutley Savings
AND LOAN ASSOCIATION

MAIN OFFICE:
371 Franklin Avenue, Nutley, N.J. 07110 • Phone: 661-3200
BRANCH OFFICE:
221 Washington Street, Newark, N.J. 07102 • Phone: 623-7090

AS SEEN ON TELEVISION

Teleflora presents Easter



Dress your Easter table in style with our colorful new Teleflora Buffet Caddy Bouquet. During the holidays, it's a stunning centerpiece or buffet table

bouquet. Later, your sunny yellow wood keepsake holds silverware and napkins. Call or visit our shop early, for delivery anywhere in the U.S. or Canada.

Give the Buffet Caddy Bouquet. Sunday, April 7.



flowerama
the ultimate in floral design

180 Washington Ave., Belleville 759-0012 Teleflora
Teleflora is a registered service mark of Teleflora Inc. Major Credit Cards Accepted By Phone © 1985 Teleflora Inc.

VIDEOTRONICS

473-8637

VHS
Thousands of Titles
In Stock
All Ratings
No Membership
No Club To Join
BETA

3 tapes for any
2 weekdays or
3 days in the weekend
\$7.99

Any
Tape
\$1.99
per day

Every Wednesday Rent One Tape \$1.99
Get Second Tape 99¢

Videotronics Movie Rental Offer

The Double Feature
Rent any movie at our regular low price and receive 2nd rental

FREE
one coupon per customer
not valid with any other offer

503 Paulison Ave.
ShopRite Plaza
Passaic

Mon-Fri 11am-9pm
Tue, Wed, Thurs 12noon-9pm
Sun 12 noon-3 pm

Young Designer Collection



little capezio

All Dressed Up In Little Capezio.

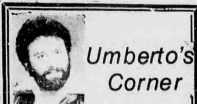
Dazzling shoes like these could only be Little Capezio, the sculpted heels are just right with dropped-waist or one piece shirt dresses. With turned-on details like bows, scallops and pearls. Now looks that are WOW looks. That's why everybody is tunin' in to Little Capezio.

Plaza Bootery

Where Fit Is Always Guaranteed

483 Franklin Ave. Nutley, N.J. 667-8964

Shoe Repairing Done On Premises
Free Parking



Umberto's Corner

Dear Umberto,
My husband became bald so he combs the hair from the cranium to the front. I told him he looks funny and he tells me to "keep quiet, you're the one that made me nervous which made me gain weight and lose my hair! Umberto, two years ago he gained a lot of weight and then he went on his own diet. He lost weight after a year or more. Can you lose hair by getting nervous or by dieting? Also, are there other ways to comb his hair? Please answer.

The Lady with the Bald Husband
Dear Lady,
You can lose hair over getting nervous, but it will grow back. If you go on your own diet, without your physician's advice, you can lose your hair faster and it will not grow back, especially if baldness runs in the family.

Yes, there is a way to comb his hair differently. He can let his hair grow longer on one side of his head and comb it to the other side. I assure you it will not look funny.
To the Belleville Italian Americans I thank you for the delicious fruit basket you sent.

Yours,
Umberto

UMBERTO
OF NAPLES
547 New Center & Center
See Umberto's Corner
FREE FRUIT BASKET
OFFER ENDS 4/15

The Belleville Times

Serving Belleville Since 1909 (USPS 049-220)

Published Every Thursday
At 155A Washington Ave.
Belleville, N.J. 07109

Annual Subscription \$12.00
Senior Citizens \$7.00

Publisher: Frank A. Orechio
Assistant to the Publisher:
Michelle Jeannotte

Second-Class Postage Paid
At Newark, N.J.
Postmaster: Send address
changes to The Belleville Times,
155A Washington Ave., Belleville, N.J. 07109

759-3200

Blight - Part Two

What is the alternative to declaring Washington Avenue - or part of it - a blighted area in order to improve its appearance and increase assessments which hopefully result in increased tax revenues?

We recommend consideration be given to a special zone for Washington Avenue and the abutting area. Thought should be given to the possibility of considering Washington Avenue as a special taxing district. These possibilities should be explored by the Belleville

Redevelopment Board and Township Commission.

No one need impune the motives of those among us who all seek the same thing. The only difference is which road we choose to get to the objective. We believe a special zone for Washington Avenue and treating Washington Avenue as a special taxing district are the means by which we can achieve the upgrading of Washington Avenue without the need to declare one of our prized assets a blight.

Municipal Budget

Our stingy Township Commissioners put together a budget that even surprised them. The frugal budgets of the past are documented that taxpayers accepted with almost no audible complaint. Part of the 1985 increase is due to a decrease of \$115,000 of state and federal aid for the year 1985. More important, is the impact of the need to budget for a 7 percent salary increase for Township employees including police and firefighters resulting from new contracts.

The 5 percent increase in the tax burden means that there will be no

layoff of police or fire personnel or decreased services. If we want safe streets, somebody has to pay the bill. The Public Safety budget includes fire, traffic and police departments costing \$5,561,000. Capital projects like street improvements, a computer system, a new fire engine, two new ambulances and water main improvements are budgeted at \$2,712,000.

The Commissioners used sharp pencils. We think maintaining and improving the quality of life in Belleville justifies the five percent municipal tax increase.

Crime Publicity

It has been the policy of this newspaper not to publish the names of individuals arrested or indicted until such time as a guilty verdict is rendered either by a jury or a judge.

With the public spotlight focused upon crimes like child abuse, rape and mugging, we have been compelled to live through an agonizing period of reappraising the foregoing policy.

Reluctantly - and very reluctantly -

we have come to the conclusion that allegations of child abuse, rape and muggings oblige us to serve the greater public interest by publishing names of accused. So, from now on - regrettable as it is - we will be publishing the names of individuals accused of breaking the law, except where minors are involved. Acquittals, of course, will be published and given the same prominence as the original story.

Avondale Bridge

Two years ago, the Avondale Bridge over the Passaic River was closed for a \$4 million renovation project. The 1905 bridge was classified as unsafe, thus requiring extensive repairs. Other bridges along the Passaic River have either undergone the same repair process or will undergo a rehabilitation project.

Motorists on both sides of the Passaic River have been living with this inconvenience for 24 months - and now at long last, we can look

forward to a day within the next couple of weeks when a sound and safe bridge will be available for our people to bridge the Passaic River.

Based upon the bridge's history, it looks like we can look forward to another 80 years before it may be closed for rehabilitation work. In the meantime, for the next 80 years, let us all hope that we can enjoy crossing the Passaic River using the Avondale Bridge with good health, happiness and a lot of money to spend on either side.

Reader wants Chamber to define blight position

To the editor:

Some time ago I read in this newspaper that the Belleville Chamber of Commerce supported redevelopment by blight. Then on March 28, there appeared an article and a letter to the editor intimating an improper vote had been taken and what was truly intended was that redevelopment without blight be the chamber's recommendation.

Some doubt now exists for those of us who look toward our town's leaders and merchants for direction and guidance as to the fate of our township. United, and with one voice, we

should move as a community in all our endeavors.

Constructive criticism notwithstanding should always be welcome within the organization one belongs, but discipline is a part one plays in belonging to that organization, and so it becomes imperative that win or lose we stand by that organization's convictions.

So come now ladies and gentlemen, let those of us who are not privileged to belong know just what your position is. Name withheld upon request

Support Fortunato's bill on paying for treatment

To the editor:

Assemblyman Buddy Fortunato (D-30) has introduced legislation that would reimburse specific municipalities, including Belleville, for 100 percent of the cost of medical and surgical treatment provided on or after July 1, 1984. The state is presently reimbursing the township for 75 percent of its cost.

I strongly urge you, the taxpayers of Belleville, to write to Assemblyman

Fortunato in support of his bill, A-2967, which would save money for all property owners. The address is 559 Bloomfield Ave., Montclair, 07042.

I would hope that the entire Legislature would be in support of this bill when it comes up before the Senate and Assembly.

Michael P. Pizzi
Commissioner

Letters to the Editor

School No. 5 is commended for program on missing kids

To the editor:

The parent group of School 5 recently presented a program open to all of the townspeople. The School 5 Parent-Teacher Association (P.T.A.) sponsored a presentation by John Walsh of the National Center for Missing and Exploited Children.

To say this meeting was top-notch would be an understatement. It was valuable, educational and moving.

I urge that we all become involved, as Mr. Walsh suggested, by taking a

part, no matter how small, in the legislative process to get the laws on the books to assist us when a crisis of this type arises. Hopefully, none of us will ever find it necessary to use them.

I commend Mr. Walsh for his efforts and salute all of the parents from the P.T.A. who were a part of the evening's presentation. It is a group like this one who makes us say with pride: "I live in Belleville."

Grace Purdue
President, Board of Education

Some good people still live in this world and in Belleville

To the editor:

There are still some good people in this world.

On March 8 I was shopping in the A & P on Harrison Street in Nutley. Shortly before checking out I discovered to my dismay that I did not have my money pouch with me. There was a considerable amount of money in it. I notified the manager and he and his employees tried to locate it.

On my return to my carriage, two

women were on their way to ask the manager to announce on the intercom if I was still in the store. I recognized the money pouch in their hand which they located in the frozen food counter. They asked me my name and upon hearing it they immediately returned it to me.

They would not accept any reward but asked to light a candle for them, which I did in Holy Family Church. Both of them were from Belleville.

Antoinette DeSent

Golden Comments

by James R. Golden

Among his writings, Gregory R. Anrig, president of the Educational Testing Service points out that one of the fastest moving changes in this period of educational reform is teacher testing. State required testing for all aspiring teachers to enter preparation and/or to become certified has spread to a nationwide trend involving 38 states, with seven additional states currently considering a teacher testing requirement. Last year nine states enacted teacher testing law and regulations.

Twenty-two states require students to pass a test before entering a teacher education program. Thirty-two states have (or will have by 1988) a testing requirement for certification. A small number of states also test at completion of teacher training, for recertification or for advanced certification under career ladder merit salary plans.

State licenses are a form of consumer protection; school children are the primary consumers of education and are entitled to such protection. Just as lawyers, physicians and those in scores of occupations licensed by states must demonstrate a basic knowledge of their field in order to qualify for state licensure, so too it is reasonable to have such an expectation for teachers.

No standardized tests by themselves can accurately measure

qualities such as dedication, motivation, perseverance, caring, sensitivity or integrity. Yet, he writes, when we remember outstanding teachers from our own school days, those are the qualities that made for excellence.

No tests results guarantee that a prospective teacher will succeed and be a really good teacher in the classroom. While no teacher can succeed and be very good without a strong knowledge of the subject taught and the skills of teaching, professional performance requires more than academic knowledge. Most of the convicted Watergate defendants were lawyers who had successfully passed the bar examination.

Is there a limit to the influence the school system has, despite all its efforts and testing, on the ability of children to learn. Other factors must be considered such as poverty, social conditions and history. Many conclude that no amount of educational reform or money or both is going to change things enough to prevent large-scale denial of diplomas since Education Commissioner Saul Cooperman insists the new High School Proficiency Test cutoff score won't be set with the political ramifications of widespread failure as an influencing factor... should he remain adamant the ability of schools to improve is essential, otherwise children - not schools - will suffer.

Question of The Week

By Stacy Wolf

Question: What are the most important areas to keep in mind for your car's spring maintenance?



Anthony Jack
partner A&R Service Center
413 Kingsland St., Nutley

"I feel the most important thing to check is your oil in the crank case. After the winter a lot of condensation gathers in this area. Your car feels it when the temperature is zero and your car engine heats up to around 180 degrees."



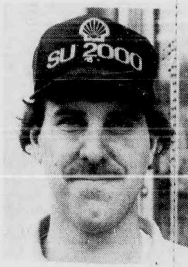
Robert Sliwowski
partner A&R Service Center
413 Kingsland St., Nutley

"A lot of cars are running rough after the weather so it's a good idea to have your car tuned up. The cooling system which is made up of your radiator and hoses should also be checked. This type of preventive maintenance helps to cut down on major costly repairs."



Richard Dee
owner of Dee's Shell Inc.
205 Darling Ave., Nutley

"People should remove their spare tires and replace them with a radial tire which will increase their gas mileage. It is also a good recommendation to rotate your tires to also increase your mileage on tires. To get the most gas mileage and mile usage of your tire check the tire's air pressure."



Paul Sibilia
Mechanic at Dee's Shell Inc.
205 Darling Ave., Nutley

"I suggest that you flush out your cooling systems and put in new coolant for the warm weather. You should also pressure test complete cooling system for leaks and circulation. Maximize your air conditioning efficiency by checking to see if the air conditioner is filled with enough freon."



First Place Honors - the newly formed Winterguard squad, Illusion, recently received first place honors in competition. The squad's members are: Liz Puglio (back left), Antonia Zangari, Kelli Ann Phelps, Hina Tailor, Cindy Lillis (captain), Amy Stahl (captain), Terri Bonfanti and Lori Herschel; Cindy Carrol (front, left), Tara Murphy, Renee Traill, Mary Kudrak (captain) Dawn Baker and Laura DeSmone.

Illusion flag and rifle squad earns first place in second competition

Illusion, a flag and rifle squad which performs to music, received first place honors in only its second competition recently held at South Brunswick High School.

The squad, which consists of 14 members, was formed to participate in a newly established activity called Winterguard.

Illusion also received a

special judges award for "Best Rifles."

In its first competition held on March 9, the squad took second place novice against three other guards. Cindy Lillis, the squad's captain, received a special judges award for "Best Commanding Officer."

Illusion practices at School 8 on Monday and Friday nights

and at the high school on Saturdays. Instructor and drill designer is Tony Del Corsano and Barbara Dileo is the squad's adviser.

The squad will also be competing at Don Bosco in Ramsey April 6 and in Verona April 20. A special show will be performed at the Belleville Board of Education's May 6 meeting in the high school gym.

Casino Commission sets hearing

The New Jersey Casino Revenue Fund Study Commission will hold a public hearing 10 a.m. April 15 at the Ridge Road School in Cedar Grove, according to Senate President Carmen Orechio.

Originally scheduled at Cedar Grove Town Hall, the hearing site was changed to accommodate

the large number of people wishing to testify, he said.

The commission, chaired by Sen. Catherine Costa (D-Burlington), has the responsibility of recommending to the State Legislature programs for senior citizens and the disabled, which are funded by the Casino Revenue Fund.

Sen. Costa, who was appointed to the commission by Senator Orechio, said that public hearings are being held throughout the state to "determine the priorities and preferences of citizens regarding the use of casino revenue funds."

Sen. Orechio's appointments also include Thomas Giordano of Bloomfield, George Chenoweth of Belleville, Melvin Haas of Cedar Grove, and Michael Rielly of Nutley.

The Senate president said he requested that hearing be held in Cedar Grove "so that the residents of the 30th District may have an opportunity to comment on how these funds are used."

"This commission is essential in assisting the Legislature to determine the proper means of maximizing the benefit of public programs which address the needs and problems of our state's disabled and senior citizens," he said.

Individuals or groups who wish to testify can call Robert Pignatello, Senator Orechio's executive assistant, at 235-1166 to register.

Orechio Association meets April 10 in Nutley

The Carmen A. Orechio Civic Association will meet 8 p.m. April 10 at the V.F.W. Hall, 271 Washington Ave., Nutley.

Guest speaker Det. Robert DeBello of the Nutley Police Department will present a program entitled "A Safer Community - A Safer You."

DeBello, a 14-year veteran of the Nutley Police Department, has spent the past five years as project coordinator of the department's crime prevention bureau. He will show a film,

"Home Security Survey," and discuss ways residents can feel and be secure in their communities and in their homes.

DeBello is a graduate of South West Texas State University's comprehensive crime prevention training program.

The standard bearer, Sen. Carmen Orechio, director of public safety for the township of Nutley, will be present to respond to relative questions on the legislative level.

All residents are invited.

TOWNE DELICATESSEN & CATERERS

650 JORALEMON ST. BELLEVILLE N.J.
751-3935

OPEN EASTER SUNDAY - April 4th thru April 8th

Proudly Presents

THE DELI SPECIALS

STARRING

1/2 lb. KRAKUS IMPORTED
BOILED HAM
\$1.57

1/2 lb. FINLANDIA
IMPORTED SWISS
\$1.83

1 lb. HOT REAL JEWISH
PASTRAMI
\$3.33

1/2 lb. HORMEL DILUSSO
GENOA SALAMI
\$2.31

Residential - Industrial - Commercial
Catering
Join Our Free Sandwich Club

Residents among 600 graduates at Montclair State

More than 600 men and women were graduated in January from Montclair State College, receiving bachelor's or master's degrees in more than 40 different areas of study.

Graduates are as follows: Lorraine Clark of 120 Rutgers St., B.S. in business administration; Dina DelMauro of 91 Harrison St., B.S. in business administration; Joseph Dunn of 59 Jefferson St., B.S. in business administration; Suzanne Feuer of 57 King St., B.A. in psychology; Helene Leeder of 320 Greylock Parkway, M.A. in computer science; Lisamarie Monar of 211 Little St., B.A. in english; Charlotte Roberts of 47 Bridge St., B.A. in english; and Elsie Winship of 251 Division Ave., M.A. in mathematics.

Formal commencement ceremonies will take place in May.

Trivia Fans

I
BET
YOU
DIDN'T
KNOW



Lou Luzzi

Brought to you
By Bigelow Motors
Chrysler Plymouth

Questions:

1. What strength-testing world championship is held every October in Petaluma, California?
2. What did Mark Twain put last on a 27-item list of things to be rescued in the event of boardinghouse fire?
3. What's the most common name in nursery rhymes?
4. How many rooms are there in a Clue game board?
5. Who led the coup that deposed King Farouk in 1952?
6. Who was the first, million-dollar winner in golf?
7. What judge told his side of Watergate in To Set the Record Straight?
8. What's the name of Dagwood Bumstead's dog?

Answers:

1. Darts
2. Diner
3. Arnold Palmer
4. Carmel Adda Nasser
5. Nick
6. Jack
7. Mothers-in-law
8. West-wrestling

Bigelow Motors
Chrysler Plymouth
50 Washington Ave.
Belleville 759-4220

Send the FTD®
Easter Basket
Bouquet.

Easter is Sunday,
April 7. Call or
visit us today.

Flowerama
180 Washington Ave., Belleville
759-0012

Major Credit Cards Accepted By Phone

®Registered trademark of Florida. Transworld Delivery Association.

Frade's DELI
CATERING
for ALL OCCASIONS

BEST YET!
Lean Domestic
BOILED HAM
\$2.19 full lb.

Land O'Lakes
White or Yellow
AMERICAN CHEESE
\$1.39 1/2 lb.

SPECIAL!
Home Cooked
ROAST BEEF
\$2.29 1/2 lb.

Thumann's
LIVERWURST
\$2.19 full lb.

SUPER BUY
POLLY O
RICOTTA
\$3.99 3 lb.

Grade A Extra Large
EGGS
89¢ doz.

HOME MADE
SALADS

BIG VALUE!

Hot or Sweet
ITALIAN SAUSAGE
\$1.79 lb.

Pecorino Romano
CHEESE
Grated or by Piece
\$3.49 lb.

Home Cooking

SAVE BIG!

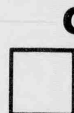
Gourmet
Pure Water
Swiss Process
Decaffeinated
Columbian Coffee
\$4.99 lb.

We Accept
Food Stamps

*** FREE DELIVERY Service**

327 Union Ave.
Belleville • 759-3509

DECISION TIME



IRA
OR THE
IRS

Open an Individual Retirement Account (IRA) at Nutley Savings & Loan on or before April 15, 1985 and give yourself a break.

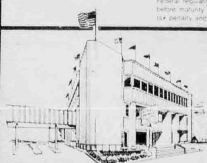
Plan for your future financial needs while saving money now with a substantial deduction on your 1984 Federal Tax Return. The money you deposit in your IRA account is tax deductible up to \$2,000 a year and even more if you're married—\$2,250 if your spouse doesn't work and \$4,000 for working couples.

And remember, you pay no taxes on your deposits or on the interest you earn until you withdraw the funds at retirement, when you're likely to be in a lower tax bracket.

We have a variety of Individual Retirement Accounts paying high market interest rates. So don't delay. Interest is paid from the day of deposit.

**Getting a break on your taxes.
It's as easy as IRA.**

Federal regulations require a substantial penalty for withdrawals from certificates before maturity. Withdrawals from an IRA prior to age 59 1/2 are subject to 10% penalty and are taxable as ordinary income in the year withdrawn.



Nutley Savings
AND LOAN ASSOCIATION

MAIN OFFICE:
371 Franklin Avenue, Nutley, N.J. 07110 • Phone: 661-3200
BRANCH OFFICE:
221 Washington Street, Newark, N.J. 07102 • Phone: 623-7090

Events in the Area

Class of 1965 planning reunion

Belleville High School class of 1965 will hold a reunion 7:30 p.m. Nov. 2 at The Chandelier, Belleville. For information, Elaine Perna, 68 Freeman St., Roseland, 07068 or Bob Turken, 76 Dumont Ave., Clifton, 07013.

May reunion for class of 1935

Nutley High School's class of 1935 will hold a 50th reunion dinner May 4. June class call Fred Heidt, 687-4249. January class call Joe Laurie, 687-6199.

Bloomfield '38 seek classmates

Bloomfield High School classes of January and June 1938 seek members for a 47th reunion 7 p.m. to midnight May 26 at Russian Hall, Singac.

Fee of \$35 includes cocktail hour, hot and cold buffet, open bar, dancing and prizes. Contact Palm DeAngelis, 301 Central Ave., West Caldwell, 07006 (January class) and Mildred Tabor Loughlin, 174 Baldwin Place, Bloomfield, 07003 (June class.)

Bloomfield health fair April 13

The Bloomfield Department of Health and Human Services and the Bloomfield College Division of Nursing are co-sponsoring a free health fair, "Bloomfield Health Expo '85," 10 a.m. to 4 p.m. April 13 in the gymnasium and science building at Bloomfield College.

The fair will offer a variety of health screenings, special events for children and demonstrations. Over 30 exhibits have already been confirmed.

CPR course offered at Maass

Clara Maass Medical Center will offer a CPR certification course 6 to 9 p.m. April 16, 23, 30 and May 7. Participants must attend all four Tuesdays to receive certification. The course is a basic cardio pulmonary resuscitation course designed for those with no prior training.

For information, call the Clara Maass Medical Center public relations department at 450-2287 from 9 a.m. to 4 p.m.

1935 classes planning reunion

Bloomfield Classes of January and June 1935 are planning a 50th reunion this September.

For information, call or write Edith Cool, 28 Baldwin Place, Bloomfield, N.J., 07003 or call 743-0364.

Chinese auction at Elks lodge

Bloomfield Elks Lodge 788 Abused Children's Committee will hold a Chinese auction 7:30 p.m. April 18 at Glen Ridge Middle School, Bloomfield and Glen Ridge avenues.

Refreshments will be served. Donation is \$3. For tickets, call Terry Smith II at 743-2386.

Fashion show, dinner April 17

Nutley Family Service Bureau auxiliary will hold its 30th annual fashion show April 17 at Westmount Country Club, West Paterson. For invitations, call the bureau at 667-1884.

For the first time in the history of the event, it will be a dinner/fashion show with cocktail hour at 7 p.m. Fashion Highlights of Clifton and the Franklin Men's Shop will provide the clothes. Colley Ballou is fashion chairperson.

St. Anthony's card party April 22

A "Spring Melody" card party is planned 7 p.m. April 22 at St. Anthony's Rosary Altar Society at St. Anthony's School, No. 7th Street, Belleville.

Donation is \$4.50 by advance sale only. There are no reserved seats and refreshments will be served. For tickets, call St. Anthony's rectory at 759-2882.

Dinner, fashions May 16 at Fiesta

Radcliffe School PTA has planned its second annual dinner fashion show 6:30 p.m. May 16 at The Fiesta, Woodridge.

Tickets at \$16 will be on sale 7 p.m. March 26 at Radcliffe School, 379 Bloomfield Ave., Nutley.

Bloomfield art show opens May 4

The Bloomfield Art League's annual "Town Paints" will be held May 4 on the town green, Broad Street at the center. Entry fee is \$5 and work will be received 8 to 10 a.m. the day of the show. Cash and merchandise will be awarded.

Open to all artists, the art show will feature photography, sculpture, watercolors and oils etc., everything except crafts. Rain date is May 5.

Cards, fashions at Chandelier

The Home and School Association of James G. Shawger School will present a card party fashion show dinner 6:30 p.m. April 12 at the Chandelier, Belleville.

For tickets at \$18, call Anita Campione at 759-2369. Children's fashions will be shown by Sherman's with hair styling by Total Image, both of Belleville.

Chinese auction at White Eagle

Fairview Home and School Association will hold a Chinese auction 7 p.m. April 12 at White Eagle Manor, 44 Broughton Ave., Bloomfield.

For tickets at \$6, call Janet Montesano at 743-9721 or Linda DeLuca at 748-5247. No tickets will be sold at the door.

Teen suicide seminar April 24

Montclair Community Hospital will sponsor a seminar on preventing teen suicide 4 to 6 p.m. April 24 at the Montclair Woman's Club, 82 Union St. To register, send a check for \$5 by April 15 to Montclair Community Hospital, Community Relations Office, 120 Harrison Ave., Montclair, 07042.

The two-hour program uses a film, lecture, discussion groups and self-evaluation exercises to help participants recognize early warning signs of teen suicide and learn how to help in crisis situations.

Fund raiser to aid Noelle set

A fund raiser for 6-month old Noelle Mascola of Nutley, a victim of a rare form of leukemia, will be held April 6 at Parks and Recreation Building, 44 Park Ave., Nutley.

Professional athletes including Darryl Dawkins and Mike O'Koren of the Nets, Lawrence Taylor and Zeke Mowatt of the Giants and Hubert Binkiemien and Jeff Durgan of the Cosmos, will sign autographs noon to 3 p.m.

Contributions to help defray the family's medical expenses for the infant, who is receiving daily chemotherapy treatments, may be sent to the Noelle Leukemia Fund, 481 Franklin Ave., Nutley, 07110.

Benefit softball game April 25

The Bloomfield PBA and FMBA will co-sponsor a benefit softball game at Pulaski Park 7:30 p.m. April 25. Tickets at \$1 apiece are available from township police officers and firefighters.

Proceeds will be used to offset the medical expenses of Ricky Piontek, a Sudden Infant Death Syndrome baby. Donations can also be sent to the police or fire departments, Municipal Plaza, Bloomfield, 07003, care Little Ricky Piontek.

Lions eye, earmobile April 13

The Bloomfield Lions Club will sponsor an eye, earmobile 10 a.m. to 4 p.m. April 13 at Bloomfield College Gym, Liberty Street, for the purpose of offering free eye and ear screening for the visually handicapped and hearing impaired.

Fashion show, lunch April 17

"I'll Remember April" is the theme of this year's fundraising luncheon and fashion show sponsored by the Montclair Community Hospital auxiliary. The event is scheduled for noon, April 17 at the Friar Tuck Inn, Cedar Grove.

Tickets at \$17 are tax deductible. For reservations or information, call Marge Saggese at 743-6060.

A fashion show by Caren Charles of Livingston will feature auxilian models.

Macaroni, meatballs April 27

St. Peter's Boy Scouts Troop 375 will sponsor its second annual macaroni and meatball dinner 6:30 p.m. April 27 at St. Peter's cafeteria, 152 William St., Belleville.

Adults are \$5, children under five are free. Call Rosemarie at 751-4595, Carmela at 759-1467 or Patty at 484-8458 for tickets and information.

Plant workshop planned May 1

A plant workshop, a "Green Thumb Get-Together," will be held 1 p.m. May 1 at the Bloomfield Civic Center, 84 Broad St.

Successful plant-growing, inside and outside, will be discussed. Gardeners are invited to share their knowledge and experience and learn from others. For more information, call the Bloomfield Division of Human Services at 743-4400, ext. 254.

Washington trip set for May

The Bloomfield Knights of Columbus and Columbietes are planning a three-day trip to Washington, D.C. May 3, 4 and 5. Fee of \$95 per person, double occupancy, includes bus transportation, sightseeing and two nights lodging.

Reservations are limited. Call Rose Ruffalo at 743-8688.

Trip for blind athletes planned

The Association of Blind Athletes of New Jersey is sponsoring a one-day trip to the Amish country in Pennsylvania May 11.

Donation of \$30 includes coffee, rolls etc. at Our Lady of Mount Carmel Church cafeteria prior to departure at 8 a.m., bus transportation, guided tour and supper at the Good and Plenty Restaurant. Free time will be allowed at the Farmers' Market.

Call Rose Ruffalo at 743-8688 for information.

Retired persons meet April 10

Chapter 57 of the American Association of Retired Persons will meet 1 p.m. April 10 in the auditorium of the Bloomfield Presbyterian Church on the Green. Coffee and homemade cake will be available after 11:30 a.m.

Emma Fontaine and Fred Branch of the Bloomfield Library will show slides and speak about the Ballantine House in Newark.

Fish, chips April 11 at Franklin

Franklin Reformed Church Women's Guild will sponsor a fish and chip dinner 5:30 to 7 p.m. April 11 in the community house on Hillside Crescent, Nutley.

Takeouts will be available at 5 p.m. Adults are \$5.50, children under 12, \$3. Call 667-7587 by April 8 for reservations. No tickets will be sold at the door.

New Beginning dance April 12

A New Beginning, a club for singles 29 to 49, is sponsoring an April Fool's dance 9 p.m. April 12 in the community room of Nutley Savings and Loan, 571 Franklin Ave.

DJ music by Aerodynamics. Light refreshments are included. Admission is \$5. For further information, call 661-3357.

Indoor flea market set April 20

St. Peter's Sports Association and St. Peter's Youth Group will hold an indoor flea market 10 a.m. to 4 p.m. April 20 at St. Peter's School, 152 William St., Belleville.

Table rental is \$12. For reservation forms, call Michele Kurash at 429-9361.

Sisters to be honored May 1

The Sisters of Charity of St. Mary's Parish will be honored 7 p.m. May 1 at a dinner at the Palace Restaurant, Kings Court, Lyndhurst. Tickets at \$15 may be purchased at the rectory or by calling 751-4352 or 667-0470.

Present and former members of the parish and community as well as alumni of St. Mary's School and former teachers and priests who have served in the parish are invited. The dinner will commemorate the 125th anniversary of the founding of the Sisters of Charity of St. Elizabeth.

Class of 1960 plans reunion

Bloomfield High School class of 1960 will hold its 25th reunion this year. For information, call Bloomfield High School or Sue Foran Sommesse at 338-3712.

Melillo testimonial dinner set

Bloomfield Fire Chief Robert G. Melillo, a 24-year member of the department, will be honored May 4 at a testimonial dinner dance at the White Eagle Manor, 41 Broughton Ave.

A cocktail hour will be held 7 to 8 p.m. with dinner following and an open bar continues to 1 a.m. Tickets at \$30 per person must be paid by April 26. Limited reservations for tables of 10 are on a first come, first served basis. Call 743-4400, exts. 255, 256 9 a.m. to 4 p.m. Monday through Friday.

Checks, made payable to the Robert G. Melillo Testimonial Committee can be mailed to fire headquarters at 375 Franklin St.

CAMEO OPTICS

BUY 1 PAIR GET 1 FREE

380 Main St., Belleville
Grand Union Shopping Center
751-4600

Buying a home?

Call us and compare our Homeowners Insurance price and coverages with the others. Maybe I can save you some money.

Call for a quote on your Homeowners insurance.

"Call me for details."

Jim Norton August Bianculli
369 Broad St.
Bloomfield, N.J.
429-0335

Allstate
Allstate Insurance Co., Northbrook, IL
Optional in most states on Allstate Insurance Company Standard and Deluxe Homeowners Policies.

382 WASHINGTON AVE. BELLEVILLE 759-1673 MEYER'S KID'S 919 FRANKLIN AVE. NEWARK 482-0585

EASTER IT'S A FANTASY LAND OF BAKED GOODS ON PARADE!

COME INTO ANY ONE OF OUR 3 LOCATIONS AND BROWSE AROUND AT OUR FANTASYLAND OF EASTER BAKED GOODS. A TRULY UNIQUE MOUTHWATERING PLEASURE!

CAKES

- EASTER LAMB CAKES
- DECORATED WITH COCONUT
- BUNNY CAKES
- EASTER EGG CAKES
- COCONUT CHICKEN CAKES

EASTER BREAD BUNNY SHAPED WITH COLORED EGGS

DANISH DECORATED WITH COLORED EGGS

ITALIAN GRAIN PIES FOR EASTER MORNING SPECIAL

AND MANY, MANY MORE

We make it just for you.. OUR OWN, PURE HOME-MADE CHOCOLATE

RICH & CREAMY. SURE TO PLEASE ANY CHOCOLATE LOVERS FANTASY

- EASTER CHOCOLATE BUNNIES
- CHOCOLATE CANDY EGGS & CANDY BASKETS
- FILLED WITH DELICIOUS BUTTER COOKIES & SUPPLIES

ALL NATURAL INGREDIENTS NO PRESERVATIVES ADDED

OPEN 7 DAYS A WEEK

MEYERS BAKERY and CAFE
227 FRANKLIN AVE • NUTLEY • 667-8587

Mar-Dom's

International Fruit Baskets

FREE HEAD ICEBURG LETTUCE With purchase of \$25.00 or more. Excludes sale items. FRESH PRODUCE DAILY.

EASTER BASKETS MADE TO ORDER

Wide Selection of Baskets in Stock Variety of Kiddie Baskets

We Carry A Complete Line of Parugina Candy & Hand-made Critchley Candy

748-3320

411 Broad St. Open Monday-Saturday Bloomfield 9:00 am-5:30 pm

Diane McGuire engaged to marry David Codispoti

Mr. and Mrs. Gerard McGuire of Belleville announce the engagement of their daughter, Diane Lynn, to David Noel Codispoti of Lake Hiawatha, son of Mr. and Mrs. Pasquale Codispoti of Millville. Miss McGuire, an alumna of Belleville High School, is a travel administrator with ADP Inc.

Mr. Codispoti, a graduate of Boonton High School, is a programming supervisor at ADP Inc.

The wedding will be held April 28.



Diane McGuire - David Codispoti



Mr. and Mrs. William Gayle Jr. - nee Trudy O'Connell

Trudy Ann O'Connell wed to William Gayle

Trudy Ann O'Connell, daughter of Mr. and Mrs. Daniel P. O'Connell of Bloomfield, formerly of Belleville, became the bride March 2 of William C. Gayle Jr., son of Mr. and Mrs. William C. Gayle Sr. of Frankfort, Ky.

The Rev. Dale Sherrod of Park United Methodist Church, Bloomfield, performed the ceremony. A reception followed

at The Chandelier, Belleville. Given in marriage by her father, the bride wore a gown of peau de soie accented with chantilly lace and fashioned with lace sleeves and chapel train. A matching headpiece held her veil and she carried a French style bouquet of white bridal roses, stephanotis and babies breath.

Terrie O'Connell of Bloomfield was her sister's maid of honor. She wore a violet taffeta gown with pleated long sleeves and matching violet flowered headpiece. She carried misty pink sweetheart roses, pink miniature carnations, lavender daisies, purple statice and babies breath.

Ben H. Gayle of Jetson, Ky. was his brother's best man.

Mrs. O'Connell chose a periwinkle crepe gown bordered with rhinestones while the groom's mother was in a rose crepe gown. Corsages were white cymbidiums.

Mrs. Gayle, an alumna of Belleville High School and Mr. Gayle, a graduate of the University of Kentucky, Frankfort, are employed at the Delaware Race Track.

The couple have made their home in Delaware following a honeymoon in the Poconos.

Clara Maass personnel visit state capitol

Holly Bauer, director of volunteers at Clara Maass Medical Center, Clara Maass auxiliary president Mary Ferrato and vice president Catherine Clark, recently joined some 200 hospital volunteers from throughout the state to take a first hand look at the legislative process in the state capitol.

Designed to prepare the auxiliaries and volunteers to expand and enhance their roles as health care advocates, the event was sponsored by the New Jersey Hospital Association Council on Auxiliaries and the New Jersey Association of Directors of Volunteer Services.

A proclamation signed by Gov. Thomas Kean commended the auxiliaries and volunteers for providing "support services, fund raising and personnel" to hospitals in the state. The proclamation was presented by Maureen Ogden, R-22nd District, who was one of the speakers at the group's luncheon.

The Day at the Capitol also included informal meetings with legislators, updates on issues affecting the health care industry and guided tours of the State House and legislative chambers.

The auxiliaries and volunteers represented 110 hospitals and some 90,000 auxiliaries and volunteers in New Jersey.

Michele Salvato to wed James Amato this fall

Mrs. Antoinette Salvato of Belleville announces the engagement of her daughter, Michele, to James Amato, son of Mr. and Mrs. John Amato of Bloomfield.

The troth was made known Feb. 2. The wedding will be held this September.

Miss Salvato, daughter of the

late Mr. Michael V. Salvato, is a graduate of Belleville High School. She is a secretary with MTS Travel, Bloomfield.

Mr. Amato, an alumnus of Nutley High School, is a supervisor with Elnik Systems, Fairfield.



Michele Salvato - James Amato

Mothers of Multiples plan benefit luncheon April 13

The Essex County Mothers of Multiples will hold its sixth annual luncheon noon April 13 at the Friar Tuck Inn, Cedar Grove. Proceeds will go to the Bergen County Cerebral Palsy

Center for treatments of a toddler.

The luncheon is open to the public. For information, call Mary Lee at 667-1334.

CORBO MARBACHS

Hot & Cold
Delicatessen & Caterers

Try Our
Homemade
Wet
Mozzarella

April 4th
to
April 6th

For Easter
Cheese In
The Basket

SPECIALS

Hormel DiLusso
**GENOA
SALAMI**
\$3.89 lb.

Thumann's
BOLOGNA
\$2.19 lb.

Thumann's
**JERSEY
HAM**
\$2.49 lb.

Thumann's
**WHITE
or
YELLOW
CHEESE**
\$2.59 lb.

(min. 1 lb. on all specials)

221 Belleville Ave. Belleville

(Cor. Union Ave.)

759-9891

DR. S.P. FISCHER

Optomtrist

takes pleasure in announcing that
DR. THOMAS F. DORRITY JR.

Optomtrist

(member of the American Optometric Association
Contact Lens Section)

is now associated with him in the
Practice of Optometry
500 Washington Avenue
Belleville, N.J. 07109

For appointment call: 751-2992

Eye Examinations

Contact Lenses

Holly Bauer, director of volunteers at Clara Maass Medical Center, Clara Maass auxiliary president Mary Ferrato and vice president Catherine Clark, recently joined some 200 hospital volunteers from throughout the state to take a first hand look at the legislative process in the state capitol.

Designed to prepare the auxiliaries and volunteers to expand and enhance their roles as health care advocates, the event was sponsored by the New Jersey Hospital Association Council on Auxiliaries and the New Jersey Association of Directors of Volunteer Services.

A proclamation signed by Gov. Thomas Kean commended the auxiliaries and volunteers for providing "support services, fund raising and personnel" to hospitals in the state. The proclamation was presented by Maureen Ogden, R-22nd District, who was one of the speakers at the group's luncheon.

The Day at the Capitol also included informal meetings with legislators, updates on issues affecting the health care industry and guided tours of the State House and legislative chambers.

The auxiliaries and volunteers represented 110 hospitals and some 90,000 auxiliaries and volunteers in New Jersey.



We are proud to introduce
Maria Paradiso-Testa, formerly of Total Image
specializing in permanent waves
and precision hair cuts

THE
Willagers
STUDIO EAST

460 Bloomfield Avenue, Montclair • (201) 783-6106

Belleville's finest celebrate 75th annual P.B.A. ball



Commissioner of Public Safety Ralph DiRuggiero and wife Susan, Betty Ann Cozzarelli and James Cozzarelli shared a table for the evening with Deputy Police Chief Commissioner Russ Purdue (seated, l-r), Grace Purdue, Betty and Joel Pisano, Joan Lister and Chief of Police George Lister.



P.B.A. President Anthony La Vista, Donna Lewis, Officer Grover Lewis, Nanette Rotunda and Det. Joseph Rotunda took time out of the festivities to pose for the camera. Seated are Susan La Vista, Joann Tortorello, Det. Joseph Tortorello, Marie Kimble, Police Capt. Raymond Kimble, Det. Sgt. William Adelhem, and wife Louise.



Marie Zinna, Town Attorney Frank Zinna, former Belleville Commissioner Matt Pica. Seated: Frank and Olga Pomaco, Robert and Lois Gaccione and Marguerite Pica.



Co-Chairman of Essex County P.B.A. Conference presenting an award for outstanding achievement to P.B.A. Local 28 President Anthony La Vista, and State P.B.A. Delegate Edgar Panier Jr.



Police Officer and president of the Columbia Association Ken Santucci, Det. Jerry Degori, Newark Police Dept.; Rae Romano, Al Volaro, Jack Rush. Seated: Peter Vaccarella, Denise Malone, Gary Soldo, Carol Chez and Joann Rush.



Municipal employees also enjoyed the festivities. This particular table included Cheryl Reed (standing, l-r), Michael and Joann Graziano, Dennis Duffy and Shirley Gough. Seated are (l-r) Mary Andrews, Public Affairs Commissioner Michael Pizzi and his wife Brenda, Gail Boscano, Marion Metigue and Cheryl Chiappinelli, township court clerk.



Enjoying the music and festivities at Nanina's that evening were Police Officers Jim Guiliano, Sheriff's Officer Joseph Guiliano, Officer John Hood, Officer Vincent Celto, Officer George Geyer, and Officer Kevin Smith and friends.



Frank Goss presenting Det. Sgt. Bill Escott with an award for recognition of being past chairman of the Essex County P.B.A. Conference. Also pictured are State Delegate Edgar Panier Jr. and P.B.A. President Local 28 Anthony La Vista.



Mayor Michael Marotti, Supl. of Schools Michael Nardiello and wife, Mr. & Mrs. Gabe Farentino, Mr. & Mrs. Vincent Cosenzo Jr. Seated: Mrs. Esther Marotti, Mr. & Mrs. Ernest Zoppi, and Mr. & Mrs. John Frade.



State Delegate Edgar Panier Jr. and President Anthony La Vista presenting a lifetime silver membership card to the N.J. state P.B.A. and Local 28 Belleville P.B.A. is Officer Vincent Cosenzo Jr. This award is presented for 25 years of service as a dedicated police officer and P.B.A. member.

Eleanor Arnold, at 74; worked at Soho Hospital

Services for Miss Eleanor Arnold, 74, were held April 2 at Hopping Funeral Home, Livingston.

Miss Arnold died March 29 in the Northfield Manor Convalescent Home, West Orange.

She had been an executive secretary at the Soho Hospital,

now the Essex County Geriatric Hospital in Belleville for many years before retiring 11 years ago.

Born in Newark, she lived in Belleville for 20 years.

She is survived by a brother, George N. and a sister, Mrs. Edna A. Vanderkamp.

John Renna succumbs; St. Anthony's Mass held

John (Bull) Renna of Belleville died March 24. A high Mass of requiem was offered March 28 at St. Anthony's Church after the funeral from the Zarro Funeral Home, Bloomfield.

Interment was in Glendale

Cemetery, Bloomfield.

Surviving are his wife, Mary Ann; a son, John; a daughter, Marie Elena; four brothers, Joseph, Angelo, Morris and Anthony; two sisters, Mrs. Rose Favorito and Mrs. Theresa Iacullo and three grandchildren.

Obituaries

Michael Rosamilia, 70; worked at Walter Kidde

Michael Rosamilia, 70, of South Belmar, died March 26 in Horton Memorial Hospital, Middletown, N.Y. He had been visiting his daughter, Mrs. Joan Randolph in New York State.

A Mass was offered March 28 in the Church of St. Rose, Belmar, following the funeral from the Reilly Funeral Home, Belmar.

Born in New Jersey, he lived in Bloomfield before moving to South Belmar 20 years ago. He was a carpenter for the Walter Kidde Co., Belleville, for many years before retiring.

He is also survived by his wife, Lorraine; five brothers, Carmine, John, Quinton, Frank and Theodore and two grandchildren.

Katherine Robinson, at 81; Lived in township 55 years

A Mass was offered March 29 in St. Andrew's Church, Clifton, for Mrs. Katherine Robinson, 81, who died March 28 in Clara Maass Medical Center.

Mrs. Robinson was born in Newark and lived in Belleville for 55 years.

Surviving are her husband, William; three sons, William, Kenneth and Ronald; three brothers, Nicholas Perrotti,

Harold Valentine and Robert Valentino; a sister, Mrs. Pauline Macanga; six grandchildren and two great-grandchildren.

The Allwood Funeral Home, Clifton, handled arrangements.

Mass held for A. DiGiovanni

Mrs. Angelina DiGiovanni died March 24. Services were held March 28 at the Zarro Funeral Home, Bloomfield, followed by a high Mass of requiem at St. Anthony's Church. Interment was in Holy Cross Cemetery, North Arlington.

Surviving are her children, Jerome, John DiGiovanni Jr. and Francis Fleming; a brother, Louis Pignatore; four sisters, Dorothy Gumbman, Josephine Pantess, Rose Grecco and Carmello Mannino; 10 grandchildren and one great-grandchild.

Dr. Anthony V. Caputo; Mass held at St. Mary's

Dr. Anthony V. Caputo, 71, died March 26 in St. James Hospital, Newark, following a short illness.

Nutley 35 years. He maintained

a dental practice in Newark for 50 years and was head of the dental clinic at St. James Hospital.

A graduate of Syracuse University and the University of Maryland Dental School, he was a member of the New Jersey Dental Society and Forest Hill Field Club, Bloomfield.

Surviving are his wife, the former Thelma St. Pierre; a daughter, Carol Fisher of Virginia; a son, John of Connecticut; four sisters, Mary Tully of Nutley, Ray Colucci of Belleville, Lee Mirabella of Newark and Eleanor Hamil of Florida and four grandchildren.

Services were held March 29 at the Biondi Funeral Home followed by a Mass at St. Mary's Church. Interment was in Holy Cross Cemetery.

Mass held for Wallace Gracie

Wallace F. Gracie of Whiting succumbed March 24. A Mass was offered March 28 in St. Peter's Church following the funeral from the Kiernan Funeral Home. Interment was in Immaculate Conception Cemetery, Montclair.

Surviving are his wife, Marie; a daughter, Mrs. Elizabeth Dare; a brother, Alexander R. and two grandchildren.

You've heard us on WCBG and WINS Radio

5 minutes via Rte. 21 Belleville Nutley

YOU can get the great deals on

HONDA PONTIAC or VOLVO

that have brought hundreds of people from ALL OVER the Tri-State area

City Motors
River Drive, at Rte. 21, Passaic Park
777-1600

BABBLING BOOKS INC.

FREE

Easter Gift With Every \$10 Purchase
A World of Books For Young & Old

Open Mon.-Sat. 10-6 PM; Open until 9 PM - Fri. evenings.

375 Centre St. Nutley, N.J. 235-0592



HONDA SCOOTERS

Prices Start At \$399

The Motorcycle Mall

165 WASHINGTON AVE. BELLEVILLE
751-4545
751-7727

AFFORDABLE INSURANCE FROM THE HOWARD

The Howard Insurance Group, a wholly-owned subsidiary of the Howard Savings Bank, introduces Universal Life, Low Cost Term and tax-deferred Annuities.

UNIVERSAL LIFE Universal Life just may be the only life insurance policy you and your family will ever need. Universal Life gives you the most dynamic life insurance coverage ever developed, including these features:

- MONEY MARKET RATES
- ADJUSTABLE PREMIUMS
- TAX-DEFERRED INCOME
- CASH VALUE

LOW COST TERM Term Life provides you with the quality life insurance you need at rates you can afford. For example, a \$100,000 policy for a qualified 35 year old male non-smoker costs only \$8.55 per month. * Similar savings apply to non-smokers of all ages.

HIGH-YIELD, TAX-DEFERRED ANNUITIES

Annuities enable you to contribute more toward your retirement income than is currently allowed under an IRA — without federal, state or local taxation. For further information on Universal Life, Term Life and Annuities, complete and mail the coupon below or call the Howard Insurance Group at 201-533-7705

* Sample rates are for issue age only. Rates increase on policy anniversaries and are greater for smokers.



YES! I WOULD LIKE MORE INFORMATION

Name _____
Address _____
City _____ State _____ Zip _____
Telephone _____
Birthdate _____ Smoker _____ Non-Smoker _____
I AM INTERESTED IN: ☐ UNIVERSAL LIFE ☐ TERM LIFE ☐ ANNUITIES

MAIL TO: Thomas W. Ward, CPCU, CLU, Vice President & General Manager
Howard Insurance Group 201-533-7705
200 South Orange Avenue, Livingston, NJ 07039

the Howard SAVINGS BANK

BUY LIQUOR RITE

PRICES EFFECTIVE THURS. APRIL 4TH THRU SAT. APRIL 6TH OF NEW JERSEY

OPEN EASTER SUNDAY 12 - 6

HAPPY HOLIDAYS!

999 LITER	935 LITER	582 LITER	1849 LITER	1423 LITER	890 LITER
1142 LITER	769 LITER	1199 LITER	1400 LITER	1186 LITER	1078 LITER
1199 LITER	729 LITER	499 LITER	498 LITER	908 LITER	708 LITER
599 LITER	100 LITER	108 LITER	429 LITER	719 LITER	340 LITER
1065 LITER	859 LITER	246 LITER	233 LITER	267 LITER	351 LITER
1243 LITER	233 LITER	246 LITER	233 LITER	267 LITER	351 LITER

KOSHER FOR PASSOVER

MANISCHWITZ 246
MANISCHWITZ 233
MANISCHWITZ 267
MANISCHWITZ 351

NUTLEY WINE SHOP

558 Franklin Ave. Nutley 667-1315

Here's just a sample of what you'll find in the New Price Finder for Specials.

Everything you need for Easter, including low prices.

Gov't Grade 'A'
Fresh Turkeys
10 to 14 Lbs. **67¢**
Lb.

Assorted Flavors
Sealtest Ice Cream
Half Gal. Cont. **199**

Fully Cooked - Water Added
Smoked Ham
Shank End Lb. **87¢**
Some Slices Removed

Keebler - Oval Snack Crackers
Townhouse Crackers
12-oz. Pkg. **119**

Grand Union Price Finder for Specials

Contains All the Specials in the Store.
Look for the Price Finder in the Store.

A Joyous Easter and Happy Passover To All Our Friends!
All stores will be Closed Easter Sunday.

Super GRAND UNION Coupon
Mt. Dew or Pepsi Light or Regular or Diet
Pepsi-Cola or Pepsi-Free
One 2-Ltr. Btl. **79¢**
No Minimum Purchase Required With This Coupon. Good Mar. 31 Thru Apr. 6. Limit One Coupon Per Customer.

Super GRAND UNION Coupon
Regular, Unbleached or Bread
Pillsbury Flour
One 5-Lb. Bag **39¢**
No Minimum Purchase Required With This Coupon. Good Mar. 31 Thru Apr. 6. Limit One Coupon Per Customer.

Whole Milk or Part Skim
Sorrento Mozzarella
1-Lb. Pkg. **199**

Chilled Orange Juice
Citrus Hill
Half Gal. Cont. **169**

THE BUTCHER BLOCK PRODUCE GROCERIES

U.S.D.A. Choice Beef
Boneless Shoulder Roast
Lb. **167**

Fully Cooked
Swift's Premium Canned Ham
5 Lb. Can **799**

Florida - White
Seedless Grapefruit
Large 40 Size **99¢**

In Juice or Syrup - Sliced, Chunks or Crushed
Dole Pineapple
1-Lb. 4-oz. Can **69¢**

Regular or No Salt Added
Hunt's Tomato Sauce
8-oz. Cans **100**

Shoulder For London Broil **187**
U.S.D.A. Choice - Boneless Beef Lb.
Beef Brisket Fresh **169**
U.S.D.A. Choice - Boneless Beef Wh. or Pt. Cut Trim Lb.
Ground Beef **127**
Fresh - 3 Lb. Roll Ea. Lb.
Corned Beef King's Pride **189**
U.S.D.A. Choice - Thin Cut Brisket Oven Roast Lb.
Pork Sausage **139**
Fresh Italian Style - Hot or Sweet Lb.

Smoked Ham Butt End **97¢**
Fully Cooked Water Added - Some Slices Removed Lb.
Ham Semi-Boneless **169**
Colonial Lb.
Butterball Swift's **89¢**
Fresh Turkeys - 10 to 14 Lbs. Lb.
WHOLESALE SAVINGS
Top Round Whole **189**
U.S.D.A. Choice - Boneless Beef Untrimmed Lb.
16 to 22 Lbs. Cry O-Vac. Custom Cut.

Fresh Spinach **99¢**
Crisp - Nutritious 10-oz. Pkg.
Fresh Escarole **49¢**
or Chicory Lb.
Rome Apples **59¢**
Crisp Red U.S. No. 1 - 2 1/4" Min. Lb.
Idaho Potatoes **59¢**
Baking - U.S. No. 1 Lb.
Sweet Pineapples **199**
Caribbean - Rippe Large Size Each

Ragu Spaghetti Sauce **139**
Assorted Varieties 2-Lb. Jar
Hawaiian Punch **69¢**
3 Pack - Assorted Flavors Three 8.45-oz. Pkgs.
Fruit Cocktail **69¢**
Del Monte - Regular or Lite (1-Lb.) 1-Lb. 1-oz. Can
Pillsbury Cake Mix **79¢**
Assorted Flavors 1-Lb. Pkg.
Scottowells Big Roll **68¢**
Colors, Decorator or Arts & Flowers 119 Sheet Roll

Frito Lay Doritos **169**
Nacho Cheese or Toasted Corn 11-oz. Pkg.
Thomas' Muffins **199**
Twin Pack - English 1-Lb. 8-oz. Pkg.
Tomato Paste **387¢**
Hunt's - Reg. Italian or No Salt Added 6-oz. Cans
Ginger Ale Canada Dry **109**
Regular or Diet 2-Ltr. Btl.
Scotties Tissue **67¢**
Facial - White or Colors Pkg. of 200

Family Pack Savings
SAVE 10 A LB. ON PKGS. OF 3 LBS. OR MORE

Pork Chop Pkg. contains 3 chops **149**
Combo - Loin, Rib End & Center Cut Lb.
Chicken Holly Farms Combo **117**
3 breasts split with ribs, 3 drums, 3 thighs Ea. Lb.
Chuck Cubed **219**
U.S.D.A. Choice - Boneless Beef Ea. Lb.

THE BIG FREEZER

Celantano Ravioli **119**
Cheese 13-oz. Pkg.
Pound Cake Sara Lee **169**
Plain, Swift Cook, Chip, Raisin Walnut 11 1/2" oz. Pkg.
Eggo Waffles **89¢**
Blueberry or Apple Cinnamon 11-oz. Pkg.

Green Giant Broccoli Spears **99¢**
In Butter Sauce - or Brussels Sprouts 10-oz. Pkg.
Totino's Pizza **139**
Party - Cheese or Sausage 10-oz. Pkg.
Green Giant Rice **99¢**
Medley or Rice Pilaf 10-oz. Pkg.

DATE-LINE DAIRY

Sour Cream **99¢**
Breakstone 1-Lb. Cont.
Margarine Corn Oil **99¢**
Fleischmann's - Reg. or Unsalted Quarters 1-Lb. Pkg.
Dorman's Singles **119**
Yellow American 12-oz. Pkg.

HEALTH & BEAUTY

Crest Toothpaste **149**
Gel, Regular or Mint 6.4-oz. Tube
Vicks Nyquil **419**
Liquid Nighttime Colds Medicine 10-oz. Btl.
Talc Shower to Shower **189**
Regular or Morning Fresh 8-oz. Cont.

THE CORNER DELI
IN STORES WITH SERVICE DELI

Turkey Breast **199**
Northwestern - Gourmet Quality Half Lb.
Hard Salami **189**
Margherita - Quality Half Lb.
Swiss Cheese **179**
Great Lakes Domestic - No Salt Half Lb.

GRAND UNION Coupon
25¢ Off
With This Coupon And Purchase Of One 1-Lb. Pkg.
M&M's Plain or Peanut Candy
Coupon Good Mar. 24 Thru Mar. 30. Limit One Coupon Per Customer.

GRAND UNION Coupon
30¢ Off
With This Coupon And Purchase Of One Pkg. Small (46), Medium (48) or Large (52) - Disposable
Luvs Diapers Convenience Pack
Coupon Good Mar. 31 Thru Apr. 6. Limit One Coupon Per Customer.

GRAND UNION Coupon
30¢ Off
With This Coupon And Purchase Of One 1-Lb. Pkg. - Quarters Lightly Salted
Hotel Bar Butter
Coupon Good Mar. 31 Thru Apr. 6. Limit One Coupon Per Customer.

FOR STORE INFORMATION
CALL TOLL-FREE
1-800-221-1835

GRAND UNION MOST GRAND UNIONS ARE OPEN 24 HOURS.
Check your local Grand Union for store hours.

Prices effective Sunday, Mar. 31 thru Saturday, Apr. 6 at all Grand Union stores in New Jersey, Rockland and Orange Counties. In order to assure a sufficient quantity of sale items for all our customers, we reserve the right to limit sales to 3 packages of any item unless otherwise noted. Not responsible for typographical errors. For store information call toll free, 1-800-221-1835.

Main Street, Belleville; 505 Allwood Rd., Cifton; 710 Bloomfield Ave., Glen Ridge

April spring concert will offer variety of musical compositions

The Belleville High School Chorus, Madrigal Singers, Orchestra, Chamber Orchestra, and Jazz Ensemble will be featured in the music department's annual spring concert Tuesday, April 16, at 8 p.m. in the school's auditorium.

The chamber orchestra, directed by Edwin Black, will perform the first movement of Mozart's Piano Quartet in E flat and the "March of the Siamese Children" from The King and I. The orchestra, also under Black's direction will perform the first movement of the Symphony No. 1 by Beethoven, selections from A Chorus Line and Puccini's Madame Butterfly and "Memory" from Cats.

Thomas Finetti, director of high school's choral groups, has selected a varied program for the choral portion of the concert. The Madrigal Singers will sing popular madrigals of the Renaissance including Thomas Morley's "Since First I Saw Your Face," "Sing We and Chant It," and "April is in my Mistress' Face."

The 135-member Mixed Chorus will perform three Negro spirituals, including "King Jesus in a-Listening," "A City Called Heaven," and "Ride the Chariot," "Neighbors' Chorus"

from Jacques Offenbach's comic opera La jolite Parfumeuse, Mozart's Adoramus te, Christe, Randall Thompson's The Last Words of David, selections from West Side Story, and "Star-maker" from the television series Fame.

The Jazz Ensemble, under Andrew Silbert's direction, will perform the title song from Fame, "Roseana," "Heart of Rock and Roll," Cole Porter's "Night and Day," and "Blues for Waldo." Senior Bernadette Daidone will be the vocalist in

the Fame selection and Peter Grammatico will be featured on drums in "Night and Day."

This year's Music Department poster contest first place winner was Linda Annunziato. She will receive a cash prize of \$60 and her design will appear throughout the community announcing the concert. Second prize of \$25 was awarded to Linda Sese, whose design will appear as the cover of the concert program. Third prize of \$15 went to Lisa Paglia.

High school students win creative dramatics expo

Two Belleville High School students were winners in the Essex County Creative Dramatics Expo recently held at West Essex Junior High School in North Caldwell.

Bernadette Daidone, who participated as a drama coach, came in first place with her group, while Geraelyn Rogers, also a drama coach, came in third place with her group.

The Dramatics Expo was

sponsored by the Essex County Steering Committee for Gifted and Talented Education and was designed to highly talented and creative students a chance to use their skills and abilities to produce an artistic dramatic play.

Daidone and Rogers worked with other Essex County students in the writing, acting and the creation of scenery for an original play.



Poster Contest Winners - Lisa Paglia (1-7), Linda Annunziato and Linda Sese were the winners in the Belleville High School Music Department's poster contest. Annunziato, first place winner, received a \$60 prize for her poster which will be seen throughout the township.

DENTALLY SPEAKING

By Drs. James D. Muglia and Paul N. De Maio

Mr. I. of Clifton asks, "I have spaces between my teeth that seem to be getting wider. Can this cause a problem?"

Mr. I. some people have natural spaces that are fine as long as the teeth and gums surrounding these spaces are biologically healthy. That is the gums are pink in color and the teeth are firm and not mobile. If however, the gums are reddish, and bleed easily when brushed then these spaces are letting food get under the gums. The gums then become sore and often there is an infection that spreads down to the bone holding your teeth. This infection will cause bone loss eventually resulting in loose teeth. Should the process continue the larger spaces will develop as the teeth move.

For peace of mind Mr. I. please have your dentist or periodontist (a dental specializing in gum care) exam your condition. Thank you.

Dentally Speaking
671 Franklin Avenue
Nutley, N.J. 07110

Public library viewed on monthly cable show

The April program of the Belleville Interagency Council features a visit to the Belleville Public Library with host David Bryant, library director. Bryant will discuss the circulation function of the library, encounter Joan Samsel, artist in residence for National Library Week and discuss her artistry workshops and then will meet Jerry Fierst, actor in residence and discuss his involvement with the Belleville

Library during National Library Week.

Bryant will also discuss the kind of reference questions that are asked at the information desk and how books are selected for the public library with reference librarian Cindy LaRue. LaRue has also acted as a Vita tax volunteer at the library.

The program concludes with a visit with Alice Norris, children's librarian, in the newly renovated Children's Room and a discussion of the seven-day calendar of National Library Week programs with Adrea Cohen, assistant library director.

The program is televised by students at Belleville High School's WBHS, directed by Marilyn Mango, media specialist, Belleville Public Schools, and produced by Cohen. Student cameramen were Michael Silletti and Robert Hutchinson and student directors were Debbie Sim and Robin Wallace.

The program will be shown every Wednesday on WBHS Channel 34 at 7 p.m.

High school students win DECA awards

Seven Belleville High School students received awards in the Northern Regional Distributive Education Clubs of America (DECA) Conference recently held at Willowbrook Mall in Wayne.

The winners in the two-day competition are as follows: Kacia Gonzalez, Annette De Ceglie and Lucinda Cedenro for fashion modeling; female formal; Kelli McDaniel and Christine Scaturro for fashion modeling female casual; Ron Verden for fashion modeling male casual; and Gerald Masi for entrepreneurship.

All winners are eligible for the state competition to be held this spring.

INCOME TAX

Returns Prepared Professionally In My Office

CALL
450-9710

- People Go Out Of Their Way -



IRA



Hot Steam Is Back



BETTY

We're The Best BRUSHLESS CARWASH OR YOUR MONEY BACK

- Interior Vacuum & Perfect Windows **FREE**
- Polish Wax — Car Polished Automatically (Reg. \$3.00 Extra) **FREE**
- Underwash — Flushes & Protects Undercarriage (Reg. \$1.50 Extra) **FREE**
- Steam Bath — Bumpers, Lower Panels, Chrome, Whitewalls & Hub Caps Steam Cleaned **FREE**

\$6¹⁴ + tax (No extra charges)

TIP-TOP CAR WASH

485 Ridge Rd. No. Arlington, N.J. 991-3629

Use Belleville Pike to Ridge Rd. Turn left to Tip-Top
Open 7 Days A Week - Sunday Til 1:30 P.M.

The Choice of the People



7 Days
24 Hours
Delicious
Salad Bar!
Italian
Specialties!
Steaks & Chops

All baking done on premises • Homemade pastries
Children's Menu Available

Special Breakfast Menu: 6-11 a.m.

Daily Businessman's Lunch: 11 a.m.-3 p.m. Salad Bar Open 11 a.m.-10 p.m.

AIA CARTE and COMPLETE DINNER MENU

We're Always Open
WILLIE'S
DINER-RESTAURANT

9 State St., Bloomfield

Call 748-7414

ARLINGTON JEWELERS

GOLD FEVER SALE

UP TO
SAVE 50%
ON OUR

14K Gold & Diamond in store special items

SAVE 30%

on the remainder of our entire HUGE inventory of Fine Diamonds, Watches & 14K Gold Jewelry

WE DO EXPERT

- JEWELRY & WATCH REPAIRS
- CUSTOM JEWELRY DESIGNING
- DIAMOND & STONE REMOUNTING
- EAR PIERCING BY APPOINTMENT
- PEARL & BEAD RESTRINGING
- DIAMOND & JEWELRY APPRAISALS

WATCH BATTERY REPLACEMENT
(WHILE YOU WAIT IF POSSIBLE)

All at low, low sensible prices
JEWELRY REPAIRS DONE WHILE YOU WAIT IF POSSIBLE
Jeweler on premises

ARLINGTON JEWELERS

Main Store: 36 Ridge Rd. North Arlington • 998-5306
Branch Store: 261 Franklin Ave. Nutley • 661-1558

Store hours: Mon., Wed. & Sat. 10-6; Thurs. & Fri. 10-8; Closed Tuesdays

HEALTH WISE



When a vertebra of the spine becomes misaligned in relationship to the vertebra above or below it, the nerves which pass through those vertebrae may be constricted. Such a condition, known as vertebral subluxation, interferes with the ability of the nerves to conduct their vital life energy to the various parts of the body.

The result of a vertebral subluxation is malfunction, disorder and/or disease in the area served by the impinged nerve.

Chiropractic offers relief from pain and sickness by locating and correcting the underlying cause. Phone now for an appointment.

DR. RALPH J. DI MAIO
Chiropractor
625 Jorammon St. 751-8905
Belleville

GOOD FRIDAY CLOSING

Nutley Savings' lobby, walk-up, and drive-through services will be closed Good Friday, April 5th.

Twenty-four hour Automatic Teller Machine services will be available to all MAC Card Holders.



Nutley Savings
AND LOAN ASSOCIATION

MAIN OFFICE:
371 Franklin Avenue, Nutley, N.J. 07110 • Phone: 661-3200
BRANCH OFFICE:
221 Washington Street, Newark, N.J. 07102 • Phone: 623-7090

**DRIVE A LITTLE
SAVE A LOT!**
15¢ per mile
with purchase

**OUT OF TOWN!
CALL COLLECT**
(201) 748-6902

GRAND OPENING EXTRAVAGANZA CATTLEMAN'S FREEZER BEEF

WHEN ONLY THE BEST WILL DO
**SPRING TIME COOKOUT
SPECIALS
JUST SAY CHARGE IT!**

NO MONEY DOWN, NO PAYMENT FOR 120 DAYS
120 DAYS SAME AS CASH, NO INTEREST or FINANCE CHARGE

EXAMPLE ONLY **USDA CHOICE SPECIAL #1**

300 LBS. FOR ONLY \$59⁵⁰

per month
for 4 months

**USDA
CHOICE & PRIME**

- Sirloin steaks
- Porterhouse steaks
- T-Bone steaks
- Club Steaks
- Rib Steaks
- Bar-B-Q Ribs
- Filets
- Strip Steaks
- Rib Eye Steaks
- Sirloin Tip steaks
- Standing Rib Roast
- English Cut Roast

Ground Beef & more

200 lbs. loin, rib, plate & flanks at \$1.19 lb. equal \$238.00 plus free 100 lb. bonus pack. Average weights 200 to 550 lbs. Includes sections 1c, 1b, 3e, 3f, 3g.

100 lbs.

**YOU RECEIVE
THIS AND THIS**

BONUS PACK

- 40 lbs. GRADE A FRYERS
- 10 lbs. LEAN PORK CHOPS
- 10 lbs. SLICED BACON
- 20 lbs. All Meat HOTDOGS
- 20 lbs. SAUSAGE

ABSOLUTELY NO CHARGE
100 lbs. bonus
with USDA
choice special
#1

Hurry folks!
Offer good for
one week only!



**USDA CHOICE & PRIME
SPECIAL NO. 2**

225 lbs. \$51⁵⁰

per month for 4 months

- T-bone steaks
- Strip Steaks
- Sirloin Steak
- Porterhouse Steaks
- Round Steaks
- Top Round Steak
- Sirloin Tip Roast
- Ground Beef
- more

YIELD 3

EXAMPLE
160 lbs. at \$1.25 equals \$200.25 plus free 60 lb. bonus pack. Average weights 165 to 400 lbs. including sections 1a, 1b, 3e, 3f, 3g.

**PLUS THE
60 LB. BONUS
USDA GRADE A**

- 20 lbs. chicken
- 20 lbs. sausage
- 15 lbs. hot dogs
- 15 lbs. picnic ham

Bonus No. 2 no charge
with Special

**PLUS THIS
25 lb. BONUS
USDA GRADE A**

- 12 lbs. chicken
- 5 lbs. bacon
- 5 lbs. hot dogs
- 3 lbs. pork chops

Bonus No. 3 no charge
with Special

**USDA CHOICE & PRIME
SPECIAL NO. 3**

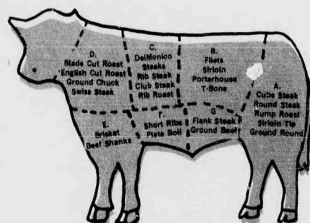
per month for 4 months

175 lbs. \$40⁸⁸

- Club steaks
- Rib Steaks
- Rib Roast
- Short Ribs
- Bar-B-Q steaks
- Chuck steak
- Sirloin steak
- Chuck Roast
- Pot Roast
- Ground Chuck
- more

YIELD 3

EXAMPLE
150 lb. forequarter at \$1.09 equals \$163.50 plus free 25 lb. bonus pack. Average weights 150 to 400 lbs. includes sections 1d, 1c, 3e, 3f, 3g.



**FREE
BARBECUE
GRILL**
To the first 10 customers
ordering 500 lbs. or more
(purchase required)

NOTICE!
Watch your beef cut and wrapped
while you wait. Charge it! No
money down. 120 days same as cash.

**FREE Introductory Offer
FROZEN VEGETABLES**

- 10 LBS. Cauliflower
- 10 LBS. Carrots
- 10 LBS. Corn
- 10 LBS. Mixed Vegetables
- 10 LBS. Peas
- 10 LBS. Broccoli

Up to 100 LBS. with beef order

**EXECUTIVE SPECIALS
USDA CHOICE OR PRIME**

50 lbs. ONLY **\$249⁵⁰**

T-BONE, NEW YORK STRIPS, SIRLOINS, K.C. STRIPS, FILET MIGNONS, RIB EYES, DELMONICO, CLUB STEAK, CHATEAUBRIANDS.

AVERAGE WTS. 50 LBS. TO 125 LBS.

**U.S.D.A. CHOICE
and PRIME CUTS**

\$2⁹⁹ lb. - \$6⁹⁹ lb.

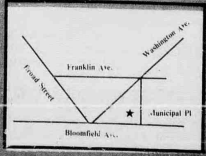
**Pre-Trimmed
Steak and Roast Orders
Priced For Volume
Buying**

Information on buying in quantity.
1. Small processing charge on all orders 20 lb. meat.
2. All beef USDA inspected and graded. You take no charges on tough or invariety meat.
3. All beef is weighed, cut and wrapped by experienced personnel to your specifications! All beef sold subject to gross hanging weight and subject to loss, and weights available at time of purchase.
4. All orders include extra plates and flanks for ground beef and soup cuts.

All beef cut on premises by appointment only. All total dollar prices based on minimum weights. All orders include extra plates and flanks for ground beef and soup cuts. All beef sold by hanging weight subject to trim loss. All free items with purchase. Examples are examples only. Beef weights will vary as beef is not a manufactured item.

CATTLEMAN'S FREEZER BEEF

When Only The Best Will Do
**563 Bloomfield Ave., Bloomfield
748-6902**



MEMBER
BLOOMFIELD
CHAMBER OF
COMMERCE



Belleville Times SPORTS

Lady Bucs look toward good season despite loss of DeAquino and Buono

By Mike Lamberti

Carl Corino was asked a simple question in regard to the status of his softball team. "How's everything going, Carl," a reporter asked last weekend. "Good question," Corino replied, a bit of light humor in the air as he began to explain the 1985 season.

It's the time of year when coaches make decisions on who will start, who will be role players and which athletes are not ready for the varsity level, yet. In Corino's case, there are some talented athletes returning from the 1984 team which posted a 24-6 record, but the coach realizes that the battery of his club is gone.

"Obviously losing Dina (De Aquino) and Tracy (Buono) is not easy," Corino said. "The kids are looking forward to the start of the season. Our field (Clearmont Field) is in good shape and everyone is gearing to play."

Corino's team got that chance last Monday when Queen of Peace came to town to open the 85 season. Yesterday, Belleville played host to Bayonne and this afternoon, the girls will host West Side, starting at 4 p.m. from Clearmont Field. On Saturday, the girls will travel to

Union for an 11 a.m. contest that will be televised by TV-3.

Returning to lead the 1985 team are senior Donna Brooks and junior Desiree Johansen. Brooks will occupy her center-field position for the third year and Johansen, a third baseman back 1983 and shortstop last year, will be at shortstop this season.

"Donna has looked real good in the field and the plate," praised Corino. "We're expecting big things from her. Desiree should fit right in, she knows the system and has the experience. This will not be a very high scoring team. We will have to work for the runs and need good pitching."

Corino hopes to acquire that hurling from Karen Fulda, a junior. She should be the number one pitcher for the Lady Bucs with Debbie Paterno also seeing time. Johansen could also pitch if the need ever arises. Corino hopes to have Laura Caruso, a sophomore, behind the plate, although Trish Tramatola will probably start the season at catcher. Cheri Tillman, a senior, will be at first base, senior Cheryl Marion is at second and Dina De Medici is at third. The outfield will see Liz Goldrick in

left, Brooks in center and Sue Schuster over in right.

"I will be carrying a smaller varsity team this year," Corino said. "This will give the younger players a chance on the jayvee level. The key is for the kids to play and get the experience. I might bring some of the younger players up for spot assignments, but what is the use of sitting up a girl and then letting her sit during a varsity game. She might as well get the experience on the jayvee or freshman team."

The junior varsity team is under the direction of Tony De Aquino while the freshman squad is led by Tony Sorrentino.

"Nothing will come easy this year," the coach continued. "We have some young players and we lost a great deal of our offense when Buono graduated. Runs are going to be tough. We haven't been hitting the ball very well in the pre season, but our defense has been pretty good. We'll get a better idea after the first couple of games."

It will be a new look for the Belleville softball team, with hopefully the same results as past seasons.



SAFE — Umpire Dennis Buckley ponders the decision of safe or out during the Lady Bucs season opener against Queen of Peace. The ladies host Westside this afternoon at 4:00 p.m.

Photo by Michelle Jeannotte

Varsity baseball team looks to improve on last year's 16-9-2 season record

By Mike Lamberti

With spring training now complete the Belleville baseball team began the 1985 season yesterday with a home game against Bergen Catholic and will battle Don Bosco away on Monday and Paramus, home next Wednesday, starting at 4 p.m.

Ralph La Conte's crew, looking to improve on last year's 16-9-2 record, is optimistic about the season. "Intensity is the key to the team this year," La Conte said. "We have the experience, but we have to take every game with the same amount of intensity. It doesn't matter who we play. We have to be up for every game and take every game with the same amount of enthusiasm. Nothing will come easy."

The coach has been happy with the pitching in the early going. "The pitching is good, the defense is okay and the hitting has yet to catch up. I'm a little surprised by that, I thought the hitting would be further along by now."

La Conte has noted that the team is hampered by injuries,

albeit minor, and illnesses. "I haven't been able to work with the starters that much. This last week was the first time all March that we were able to work as a team."

Barring any injuries, La Conte was hoping to start Tom Reid, a senior, in the pitching rotation. Reid could give way to Allan Ruopp, a junior and sophomore Jim Dunphy. "I might use three pitchers in the Bergen Catholic game," La Conte said. "It's early and I would like to give the pitchers some work. I'll play it by ear as the game goes on."

The infield will see Steve Mulhearn at first, Dean Sternik at second, Joe Mullaney at shortstop and Joe Feith over at third base. All those men are seniors and have varsity experience behind them. The catcher is a solid hitter in John Auriemma, a junior. In the outfield will be Dave Long in left, Ruopp in center and James Caponi in right. Long is a junior and Caponi, a senior.

"I have some underclassmen that could see time as the year progresses," La Conte said. "This team is the culmination of three years of dedication and hard work. I would like to think that this team will make a run at the roses. We're solid up front this year, but we could be in trouble in the depth area."

La Conte is also happy about the teams "new look" for 1985. He isn't elaborating, other than encouraging the fans of Belleville to turn out for the games and see the "new look" Buccaneers.

"It should be a good team," the coach said in closing. "I think we're right on schedule for the season. The legion team had a good summer and everything seems to be falling into place. These early games will be a good time to see what we've got. I'm not going to base any decisions on the first few games because they are a time of learning and getting used to varsity competition."



ALMOST HOME — The Lady Bucs put another run on the board in their home opener Monday against Queen of Peace. They will play their third game in four days this afternoon. A full story on the Bucs first few games in next weeks edition.

Photo by Michelle Jeannotte

Buc Shots

By Mike Lamberti

Girls' softball team reaches new heights under Corino

It was back in the early days of March, 1980, that a man named Carl Corino took to the diamond as the new coach of the Belleville softball team. He preceded a lady that had built the foundation of the program during the 1970's and found the transition rather easy because the lady that Corino replaced was his wife, Eve.

Corino found a young and ambitious team awaiting him in 1980. There was a good blend of youth and experience and a group of hungry athletes that were determined to make a mark in the sport. The 1980 team finished with an 18-8 mark, a record that bears even more reflection when you consider that the team was once 9-6 and struggling to stay above .500. "That team turned it on in the later stages of the year," Corino remembered. "They came together in the county tournament and started to believe in themselves."

The girls of 1980 advanced to the championship game of the Essex County tourney, stopping Columbia in a wild contest in the semi finals, 4-3. Awaiting Belleville in the finals was an awesome squad from Cedar Grove, a team that had won some 40 games in a row and featured a pitcher named Laurel Van Der May that threw as fast a ball as anyone could remember. Belleville gave a valiant effort, but fell short, bowing by a 4-0 count to the machine fr. The Grove. The girls left disappointed but determined to come back.

That comeback path was detoured in 1981, although the squad did post another 18-8 mark. "We missed out in the big games that year," Corino said. "The last few weeks were like a blur. We just couldn't get it together in the county and state games."

After a near miss in 1980 and a disappointing 1981, the seniors of the 1982 season decided on a mission. That mission was to capture a county title and put Belleville softball on the map. "That team," Corino said of the 1982 group, "was a special breed. They were hungry, they were all business. They just believed that they wouldn't lose. Everyone on that team was totally dedicated to softball. They were so tough, just a great group of players. Everyone knew their roles and did the job."

For the record, the 1982 team posted a marvelous 24-2-2 log. Its only losses came in late April to Kearny in the eventual Group IV champion, and to Livingston in an eight inning affair in the semi final round of the Group IV, Section II playoffs. Belleville avenged both losses, defeating Kearny, 10-5 in late May and stopping Livingston for the county championship one week after losing in the state playoffs.

"I was thinking about the Livingston state game," Corino said. "If we had won the game, I think that team could have taken the state title. It just wasn't meant to be."

Corino's logic is justified. Belleville held a 4-0 lead in the fate filled contest against Livingston. However, poor fielding and untimely hitting (or lack of hitting) put Livingston back into the game and eventually propelled the Lady Lancers to victory. Livingston rallied back to tie the game at six and went on to win, 8-6 in eight innings. The Lancers then stopped upstart Roxbury 18-5 in the championship game of Group IV, Section II before losing to Kearny in the state semis. Corino reasons that his team could have defeated Roxbury and

would have given Kearny a run to the money. Belleville had just defeated Kearny one week before the Livingston game and were the only team to stop the Kards in 1982. However, that is just speculation and you can not bring back the past.

The girls got their chance at revenge with Livingston one week after losing the state game. This time the prize was the county title and the Belleville girls were not about to let down twice. "It was our last chance," Corino said. "We wanted to show something for our fine season. If we would have lost that game, it would have been a big disappointment for the girls, especially the seniors."

At the end of the game, then you saw a special determination on the faces of those girls. Watching Rosie Leonidis, Mona Stampe and Nancy Coffey warming up, you sensed right away that this was not an ordinary game. There were no smiles, no kidding around, just a look of sheer determination. Two hours later, that determination had paid off with an 8-0 victory the championship of Essex County and the final mark in a 24 victory season. The jubilation in that team following the final out did it all.

The girls of 82 featured Stampe at first base, Leonidis at second, junior Kim Indiero at shortstop and Coffey at the hot corner. The catcher was a budding sophomore named Tracy Buono and the outfield featured an upstart freshman, Donna Brooks, junior Donna Campana and steady senior Angela Chimento. Luis Dimas was the teams capable pinch hitter and key role player. Lois De Luccio, who would be a fine first baseman for the 1983 team, was the designated hitter. The pitching corp was led by

sophomore Dina De Aquino, a young lady with a stingy fastball. "Dina won 15 games for us that year," Corino said. "There were times when she was wild, but she had the sticks to back her up. There was a lot of firepower in that lineup. We could score seven, eight or nine runs a game. Those were the good old days, and don't get me wrong, the kids of the past three seasons have been great also. I mean the 1983 and 1984 clubs were certainly big winners. But the 82 team broke the ice, put us on top and gave us confidence to keep going."

In 1983, the girls won a second, county championship, halting Bloomfield, 3-1 for the honors. The Belleville girls also won the NNJL title, stopping the Lady Bengals once more. De Aquino won 17 games that year and the infield was worked with Desiree Johansen at third base, Lorraine Bini at second and De Luccio taking over at first. Only Indiero returned from the 1982 team in the infield. Buono was developing into a solid power hitter and catcher and the outfield of Brooks, Campana and Kathy Woods was very effective. When Woods didn't play the outfield, she was a pitcher who did a whole of a job. I remember a game in 1982 when Kathy pitched a masterpiece to halt Montclair, 5-2 in the first round of the state tourney. It was a contest that Montclair led, 2-1 in the seventh inning when Coffey lined a single to tie the game and set up an eventual victory.

As the 1985 season commences, there are new names that will fill the headlines. Gone are De Aquino, Buono, De Luccio and Stampe. But arriving on the scene are young players like Karen Fulda, Dina De Medici and

players like Brooks and Johansen. "This years team should be okay," Corino said. "They lack confidence right now, but that will come with playing time and experience. We're not going to going to score a lot of runs, but we have some talent and should be able to win games."

If sometime during the season, when the pressure is high and he doesn't know which end is up, Carl Corino might think back to that spring of 1982 and remember a special play, or a special game. Because that 1982 team was indeed, a special group of players.

Good luck to the spring teams of 1985 as the regular season gets underway. It seems hard to believe that the school year is just ten week away from summer vacation. It seems like yesterday when the Belleville football team was playing and the forecast was for snow and cold weather. Only 16 more days before I get married. How time flies when you're having fun.

Answer to last weeks quiz. The question was name the last Ivy League school to make the Final Four and the year it happened. Also, name the other three teams in that Final Four and the NBA stars that came from that tourney. The answer: Penn was the last Ivy League school, making the Final Four in 1979. Joining Penn was De Paul, Michigan State and Indiana State. Larry Bird, of course, graduated from Indiana State while Magic Johnson led Michigan State. For De Paul, Mark Aguirre was a freshman.

For this week, name the teams in the 1977 Final Four and at least two players from the four teams that are current NBA players.

Giuffrida 'pleased' with team's performance in Philadelphia

When Sam Giuffrida was asked to describe his teams performance last weekend in Philadelphia, the coach said he was "pleased." When asked about the future of his team, Giuffrida said he was "pleased." When asked if the New York Mets would win the 1985 World Series, Giuffrida said he was "pleased."

Suffice it to say, Giuffrida was very happy with his teams performance at the Manny Flick races held last Sunday in Philadelphia. Belleville took seven boats to the rugged event and came away with one first place medal and six second place shells.

"It was the best team performance we've ever had at the flicks," the coach said. "I was very pleased (there's that word again) and happy for the team. They came through with a fine effort."

Racing in inclement weather, the Bucs came through like champs. The novice boys eight shell took a first place, winning by a whopping eight lengths. The freshman boys eight boat and the junior four boys both took second place, with the junior four boys losing by just 2 seconds. "We were rowing at 27 or 28 pace, compared to 31 or 32," Giuffrida said. "I was happy with the pace. This race gave us a good chance to see what the team could do. We did some experimenting and the team pulled through."

The senior four boys lost a tough race to a very good Atlantic City shell, bowing by 1.8 seconds. The girls senior four shell, which won a national title in 1984, was second to Upper Merion, normally a powerhouse in high school crew. The girls got some bad news when it was learned that Maureen Russo, a member of the 1982 and 84 championship shells, will be lost for the season. Russo had knee surgery before the season and will not be able to make it this year. Her position will be occupied by Sally Anne Dalton.

The junior four girls lost by 8 seconds and the novice girls were beaten in a close race by Holy Spirit of Atlantic City.

"The key is for the team to be healthy," Giuffrida said. "We were understroking the other boats, which was a good sign. This was the first time that we

took the freshman and sophomores to the flicks, so it was a good experience.

Giuffrida is waiting for the return of Sean Mulcahey to the junior four boys shell and Mark Walden to the senior four boat. Also missing is sophomore Frank Morel, a young man that Giuffrida is very high on. All three men have been hampered by injuries in the early going.

All tolled, it was a very good weekend on the waters of the Passaic for Belleville. The team will battle Kearny tomorrow morning at North Arlington, starting at 9:30 a.m. On April 13, the Bucs will take on Nutley at North Arlington and on the 14th, will travel back to Philly for another flick race. The Bucs will participate in the flicks four times this season and should be in good shape for the big regattas in May.

Subs 'n Stuff wins tournament in rec men's volleyball league

Subs 'n Stuff emerged as the 1985 men's volleyball league tournament champions as they defeated the regular season winners, Vito Sylvestro's, in the finals.

Subs 'n Stuff lost the first game of the set, 15-10, before bouncing back to win 15-11 and 15-7 to gain the championship.

Subs 'n Stuff finished the season with an overall record of 15-2, while Vito Sylvestro's ended with the same 15-2 mark.

En route to the finals, Sylvestro's beat DeLorenzo Construction (Heat), 15-9, 15-5 in the semifinals, while Subs 'n Stuff bested Mystery, 15-9, 15-11.

Seniors lead boys' track team to optimistic season says coach

The Belleville track team opened the 1985 season last Tuesday with a match against Bloomfield at Belleville High and will stay home for a match with West Orange, this afternoon starting at 4 p.m. Next Tuesday, the Bucs will travel to Paterson to face NNJIL rival Eastside in a 4 p.m. start.

Head coach John Tosato has a certain amount of optimism entering the season. He cites the strong leadership taken by the senior members of the team and the excellent practice sessions that the team has endured. The month of March was much warmer than previous years and the Bucs took full advantage of the seasonable temperatures.

Tosato will look to Robert Hutchinson, a senior, Bill Huamani, senior and sophomore Craig Burden to lead the middle and long distance events. "Those three will probably see action in the 800, mile and two mile," Tosato said. "They all have good versatility and should be effective in all three."

Tosato also has about five freshman and sophomores that could help out in the middle distance events as the season progresses. J.R. Di Vincenzo, Joseph Speer and Willie Chandler will handle the sprinting events this year. All three men are juniors and will take part in the 100, 200 and possibly the 400 meters. Di Vincenzo is the most experienced of the three and is coming off of cross country and indoor track.

Nick Complitano could see time in the 400 meters, the high hurdles and the 400 meter low hurdles. "I don't think he will compete in all three events during one meet," Tosato said. "The races are too close to each other."

Senior Mike Siletti, who had a fine indoor season, will see time in the hurdling events and the high jump. Sophomore Loung La is set for the long jump. Last season, as a freshman, La jumped nearly 18 feet, certainly a good indication of future events. The pole vault will see sophomore Vince Trupia and five freshman competing.

Over in the triple jump, La should once again be the number one man. The weight events will feature Frank Trupia in the discus and shot put, and Larry Boiscano possibly tripling in the shot, disc and javelin. Tosato is optimistic with the team's overall enthusiasm and the young athletes that could add depth to the Buccanero roster as the 1985 season progresses. Stay tuned, there could be some good news on the horizon.

New recreation track program will teach the fundamentals

The Belleville Recreation Department will be introducing a recreation track program for boys and girls in grades 6, 7 and 8. The program will be designed to introduce aspiring runners to the fundamentals of track and field. Participation, rather than competition, will be stressed.

Training will consist of instruction and fun activities, instead of intense physical workouts.

Children in grades 6, 7 and 8 who reside in Belleville are eligible. "Those children, however, who will be playing baseball or softball cannot take part in this program, since practices and schedules will conflict. To register, come to the recreation office at 407 Joralemon Street Monday - Friday between 8:30 - 4:00 with your birth certificate.

GRAND OPENING

北 PEKING 京

CHINESE RESTAURANT

GRAND OPENING LUNCH SPECIAL

FREE

Fried Rice and
Choice of Soup with Lunch

TRY OUR OPENING SPECIALS
Peking Noodle • Empress Chicken
House Special Fish • Beef Jasper
Sizzling Beef and Scallop Combination
Special Lamb in Two Styles
Double Flavor Shrimp
Happy Family Platter

10% OFF ALL DINNERS
With Ad

591 Bloomfield Ave., Bloomfield
429-0124 - 429-0125

Open 7 Days

ROSSMORE

Pharmacy

338 Washington Avenue
759-1956

EASTER CENTER

BASKETS CANDY CARDS

PLUSH ANIMALS

Chocolate Rabbits-Solid & Hollow
Jelly Beans, Chocolate Eggs,
Peruggina, Schrafft's, Russell Stover

**HOP ON OVER
JOIN THE FUN**

Season House

217 Belleville Avenue
Belleville
450-0285

Specializing in Hunan,
Szechan and Cantonese Cuisine

FREE DELIVERY

450-0285

Mon.-Thurs. 4 PM-8:30 PM
FRI. SAT. SUN. 4 PM-9 PM

OPEN 7 DAYS

Where To Dine

\$5.95 ALL YOU CAN EAT

ALL YOU CAN EAT MENU

1. Pepper Steak	2. Chicken Chow Mein	3. Pork Fried Rice	4. Beef Chow Mein
5. Beef & Pork	6. Beef & Pork	7. Beef & Pork	8. Beef & Pork
9. Beef & Pork	10. Beef & Pork	11. Beef & Pork	12. Beef & Pork

PUPU INN

1030 BROAD ST.
Near Washington Ave.

Closed Mondays • Take-Out Service • Tel. 338-5442 • 338-5443

TY & COMPANY

RESTAURANT
PUB

Lunch Served
11-2
Dinner Served
5-10 Mon-Thurs.
5-11 Fri. & Sat.

Snacks Served
Till Midnight

Off Van Houten Ave.
66 Mt. Prospect Ave.
Clifton, N.J. 777-0233

Armando Di Villa

RISTORANTE
HOSTED BY ONOFRIO

EXQUISITE ITALIAN CUISINE

Come and dine in our new exquisite
beautifully remodeled surroundings.
We'll cater to any size party. Call for your
special occasion - wedding, bar mitzvah,
birthday or anniversary.

R.S.V.P. Required 667-8899
800 Bloomfield Ave. Nutley, N.J.

LEE'S

Hawaiian Islander

Mon., Tues., Wed. 5-10 p.m.
Smorgas - Luau

All you can eat **\$9.25**

768 Stuyvesant Ave. Lyndhurst 939-3777
635 Lexington Ave. Clifton 478-1977

PEKING

CHINESE RESTAURANT

北 京

The cuisine of Szechuan and Hunan provinces are the specialties brought to our area recently by a newly opened restaurant - Peking Chinese Restaurant, located in the heart of Bloomfield's shopping district at 591 Bloomfield Avenue, Bloomfield. Owners David Chung, Tony Wu, Katy Liu and Terry Liu have owned the Snow Pea Restaurant in the Fort Lee area for the past four years and have decided to bring their culinary talents and expertise to Essex County.

Peking Chinese Restaurant is open seven days a week from 11 AM to 10 PM. Seating capacity for 80, so if you're planning a party, they will be happy to accommodate you. For further information - call 429-0124.

Businessmen's Luncheons specials are being served Monday through Saturday starting at noon until 3 P.M. The specials include choice of soup, entree with rice, and tea and wine in price starting at \$3.25.

Dinner specialties featured on their menu are unique such as "General Tso's Chicken," "Beef Jasper," "Triple Fragrance," "Dragon and Phoenix Delight," and "Rainbow Shrimp." Take out orders are available for both menus.

Treat yourself to a delightful experience in unique oriental dining at the Peking Chinese Restaurant, 591 Bloomfield Ave. Bloomfield, 429-0124.

The FEEDBAG

FAMILY SALOON

36 Broad St.
Bloomfield (Bloomfield Center)
743-7285

A feedbag is a pizza dough baked around fresh
tomato sauce, cheese, onions, peppers, and
your choice of over 20 of your favorite meat
and fresh vegetable fillings.

OPEN MON THRU SAT FOR LUNCH
AND DINNER AND LATE NIGHT SNACKS

北 PEKING 京

CHINESE RESTAURANT

Grand Opening Lunch Special
Free Fried Rice and Choice of Soup
Served With Lunch

591 Bloomfield Ave.
Bloomfield, N.J. Open 7 Days 429-0124

Join Us For A Fabulous
Easter Brunch April 7 - 10am-4pm

PROUD MARY'S

409 Franklin St.
Bloomfield
429-9246

Karpen's

Deli Restaurant

473-6408

Breakfast • Lunch • Dinner
Mon.-Fri. 9-8 Sat. & Sun. 8-8

1115 Bloomfield Ave. Clifton
Northern N.J.'s Finest Sandwich Shop

WILLIE'S

Diner - Restaurant

9 State St., Bloomfield 748-7414

Open 7 Days 24 Hours
Italian Specialties!
Steaks & Chops
Delicious Salad Bar - Homemade Pastries

Belleville High School 1985 spring sports schedules

Boys' Tennis

Apr 4	Bergen Catholic	Home	4:00
Apr 8	Don Bosco	Away	4:00
Apr 10	Paramus	Home	4:00
Apr 12	Ridgewood	Home	4:00
Apr 15	Teaneck	Away	4:00
Apr 17	St. Joseph	Home	4:00
Apr 19	Paramus Catholic	Away	4:00
Apr 22	Hackensack	Away	4:00
Apr 24	Bloomfield	Away	4:00
Apr 26	Paterson Eastside	Home	4:00
Apr 29	Montclair	Away	4:00
May 1	Passaic	Home	4:00
May 3	Nutley	Away	4:00
May 6	Paterson Kennedy	Home	4:00
May 8	Clifton	Home	4:00
May 10	Bloomfield	Home	4:00
May 13	Paterson Eastside	Away	4:00
May 15	Montclair	Home	4:00
May 17	Passaic	Away	4:00
May 20	Nutley	Home	4:00
May 22	Paterson Kennedy	Away	4:00
May 24	Clifton	Away	4:00

Golf

Apr 4	W. Essex	Away	4:00
Apr 8	Kearny	Home	4:00
Apr 11	Don Bosco	Away	4:00
Apr 15	Bergen Catholic	Home	4:00
Apr 17	Bon Bosco	Away	4:00
Apr 18	Irvington	Home	4:00
Apr 22	Bloomfield	Home	4:00
Apr 24	Paterson Eastside	Away	4:00
Apr 29	Passaic	Home	4:00
May 1	Clifton	Away	4:00
May 6	Montclair	Home	4:00
May 7	Paterson Kennedy	Away	4:00
May 10	Irvington	Away	4:00
May 14	Nutley	Home	4:00
May 16	Caldwell	Away	4:00
May 20	Kearny	Home	4:00
May 21	Paramus Catholic	Away	4:00

Girls' Spring Track

Apr 4	West Orange (co-ed)	Home	4:00
Apr 9	Paterson Eastside	Home	4:00
Apr 16	Montclair (co-ed)	Away	4:00
Apr 18	Passaic	Home	4:00
Apr 23	Nutley	Away	4:00
Apr 30	Paterson Kennedy	Away	4:00
May 2	Clifton	Home	4:00
May 16	Livingston (co-ed)	Home	4:00

Softball

Apr 6	Union	Away	11:00
Apr 8	Immaculate Heart	Home	4:00
Apr 10	Paramus	Home	4:00
Apr 12	Ridgewood	Away	4:00
Apr 15	Teaneck	Home	4:00
Apr 19	Paramus Catholic	Home	4:00
Apr 20	Livingston	Away	10:30
Apr 22	Hackensack	Home	11:00
Apr 24	Bloomfield	Home	11:00
Apr 26	Paterson Eastside	Away	4:00
Apr 27	Lyndhurst	Home	7:30
Apr 29	Montclair	Home	4:00
May 1	Passaic	Away	4:00
May 3	Nutley	Home	4:00
May 4	Caldwell	Home	7:30
May 6	Paterson Kennedy	Away	4:00
May 8	Clifton	Away	4:00
May 10	Bloomfield	Away	8:00
May 13	Paterson Eastside	Home	4:00
May 15	Montclair	Away	4:00
May 17	Passaic	Home	4:00
May 20	Nutley	Away	4:00
May 22	Paterson Kennedy	Home	4:00
May 24	Clifton	Home	4:00

Freshman Softball

Apr 4	Woodrow Wilson	Home	4:00
Apr 9	Bloomfield South	Away	4:00
Apr 12	Ridgewood	Away	4:00
Apr 15	Teaneck	Home	4:00
Apr 16	Rutherford	Home	4:00
Apr 22	Lincoln (West Orange)	Home	4:00
Apr 26	Paramus	Away	4:00
Apr 29	Roosevelt (West Orange)	Away	4:00
May 1	Hackensack	Away	4:00
May 7	Rutherford	Away	4:00
May 9	Bloomfield South	Home	4:00
May 10	Lincoln (West Orange)	Away	4:00
May 14	Bloomfield North	Away	3:30
May 17	Teaneck	Away	4:00
May 23	Bloomfield North	Away	3:30
May 29	Roosevelt (West Orange)	Home	4:00

Freshman Baseball

Apr 8	Don Bosco	Home	4:00
Apr 10	Paramus	Away	4:00
Apr 15	Teaneck	Home	4:00
Apr 17	St. Joseph	Away	4:00
Apr 19	Paramus Catholic	Home	4:00
Apr 22	Hackensack	Home	11:00
Apr 24	Woodrow Wilson	Home	4:00
Apr 26	Paterson Eastside	Away	4:00
Apr 29	Montclair	Home	4:00
Apr 30	Roosevelt	Away	3:45
May 1	Passaic	Away	4:00
May 3	Nutley	Home	4:00
May 8	Christopher Columbus	Away	4:00
May 10	Woodrow Wilson	Away	4:00
May 13	Paterson Eastside	Home	4:00
May 15	Montclair	Away	4:00
May 17	Passaic	Home	4:00
May 20	Nutley	Away	4:00
May 22	Roosevelt	Home	3:45
May 24	Christopher Columbus	Home	4:00

Rec department needs coaches for spring sports

The Belleville Recreation Department is seeking coaches for its Boys' Baseball and Girls' Softball Leagues. Men or women interested in coaching a team in the Peanut League Baseball for ages 8-9, Pee Wee League Softball for ages 8-9, Junior League Baseball for ages 10-12, Pigtail League Softball for ages 10-12, Intermediate Senior League Baseball for ages 13-15 or in the Junior Girls' Softball League for

ages 13-15 are urged to contact the recreation department at 450-3422 as soon as possible. Sportsmanship, basic skills and fun are the objectives of the leagues. Every player on each team who attends required practices will play in every game. Come volunteer your time and share your interest and knowledge with the youngsters in town.

Heard at ringside

By Steve H. Frank

David Bey didn't appear to be affected by the shelacking dealt out by the fists of champion Larry Holmes in their heavyweight title tilt. After the mugging, Bey was seen having a ball at Holmes' victory party that lasted into the wee hours of the morning. And Bey was dancing up a storm until the end.

Representative Pat Williams (D., Mont.) called for the establishment of a voluntary agency to oversee boxing in America. It would be an effort to clean up boxing from the inside without federal funding for mandatory regulations. Rep. Gus Yatron (D., Pa.) a co-sponsor of the bill is an ex-professional boxer of the 1940s.

Tracy Harris of New Paltz, N.Y., won his second New York State Golden Gloves boxing title in the 125-pound open class. According to ringsiders, Harris was awarded a "gift" decision over Angel Ojeda of New York City at Madison Square Garden. The crowd greeted the verdict with long and loud booing and stamping of feet in demonstrating their disagreement. Was Harris awarded the verdict as a favor to somebody? The boxer is the adopted son of former world heavyweight champion and ex-New York Athletic Commissioner Floyd Patterson.

Eddie Futch, premier trainer who has worked with many champions including Larry Holmes, commented in Las Vegas after the Holmes-Bey fight, "If Holmes does retire, there are no standouts in the division. The heavyweight divisions about as weak as I've ever seen it."

Don King known as the impresario of boxing, stepped out of character to promote the successful Michael Jackson tour, will again take the step outside the boxing circle. Willy T. Ribbs, America's only black major-league race cadriver, announced King has been retained to manage and promote his racing career. King said, "We're both pioneers, and we're going to ride our wagon together."

Frazier, who trains and manages the fight activities of his sons, Marvis and Rodney, broke with Joe Verne because they were not satisfied with Verne's handling of their promotion. Frazier got together with promoter Don King. Once they read King's lengthy contract the Fraziers decided to shop around seeking another agent.

Where more Americans find a bigger refund

H&R BLOCK

Found Patricia Leser

\$1117!

What can we find for you?

155 Franklin Ave., Nutley 235-1000
125 Washington Ave., Belleville 751-3836
18 Broad St., Bloomfield 743-0898

Open 9 a.m.-9 p.m. weekdays, 9-5 Sat. & Sun.

Appointments Available - MasterCard & Visa Accepted

HOUSE CALLS AVAILABLE



We can't promise everyone this, but in a recent survey of customers who got refunds, 3 out of 4 believe they got bigger refunds than if they did their own taxes. 3 out of 4!

ORTHODONTICS



•Dental Insurance Welcome
•Affordable Prices For Children and Adults

175 Franklin Ave. Nutley 667-6850
(Free Consultation With This Ad)



LOUIS LOU DeMASSI'S DISCOUNT CORNER SINCE 1937!

PONTIAC in LYNDHURST!

PARK AND RIVERSIDE AVE.

LYNDHURST 939-6100

HOURS:
Mon.-Fri. 9-9
Wed. 10-6
Sat. 10-5

5 ★★★★★★
SERVICE EXCELLENCE
AWARD WINNER

Prices Exc. Lic. Fee & Tax

Keep that great GM feeling with genuine GM parts!

GM QUALITY SERVICE PARTS
GENERAL MOTORS PARTS DIVISION

NEW 1985's

'85 PONT. 6000 CPE.	'85 FIREBIRD	'85 SUNBIRD CPE.
Auto. trans., 4-cyl. eng., fuel injection eng., pwr. st. pwr. brks., bdy. sl. mldgs., radio. Not in stock. 4-6 wks. del. List \$9503.	Reclining bucket seats, 4-cyl. fuel injection eng., 5-spd. trans., pwr. steer. pwr. brks., McPherson strut susp., rally whit. radio. Not in stock. 4-6 wks. del. List \$9283.	Reclining bucket seats & console, 4-cyl. fuel injection eng., 5-spd. trans., front pwr. disc brks., rack & pinion steer., bdy. sl. mldgs., fog lamps, radio. Not in stock, 4-6 wks. del. List \$7965.
\$8398	\$8466	\$6767

NEW '84 LEFTOVERS

'84 PONT. 5-DR. HATCHBACK
Auto. trans., 4-cyl. eng., pwr. steer., pwr. brks., cloth bucket seats, 4 gl., spt. mirrors, w.w. tires, whl. trim rings, 1 in stk. 3666. List \$7694.
\$6869

NEW LOW FINANCING

8.8%
Annual Percentage Rate
ON '85 & '84 IN STOCK FIERO'S & SUNBIRD'S

USED CAR PRICES...SLASHED!

'81 BUICK SKYLARK 4-DR.	'80 CHEVY IMPALA 4-DR.	'81 CHEVY MALIBU 4-DR.
Auto. trans., 4-cyl. eng., pwr. steer., pwr. brks., air cond., ti gl., elec. windows, radio, 10-15 mi. W.A.S. \$7295.	Auto. trans., 6-cyl. eng., pwr. steer., pwr. brks., air cond., ti gl., elec. windows, radio, 10-15 mi. W.A.S. \$4995.	Auto. trans., 4-cyl. eng., pwr. steer., pwr. brks., air cond., ti gl., am/fm radio, 10-15 mi. W.A.S. \$4995.
\$6895	\$4095	\$4995
'79 BUC. KYLARK 4-DR.	'79 FORD MUSTANG 2-DR.	'83 GRAND PRIX
Auto. trans., 4-cyl. eng., pwr. steer., pwr. brks., air cond., am/fm radio, 4-12 mi. W.A.S. \$4695.	Auto. trans., 6-cyl. eng., pwr. steer., pwr. brks., air cond., am/fm radio, 4-12 mi. W.A.S. \$4695.	Auto. trans., 4-cyl. eng., pwr. steer., pwr. brks., pwr. windows, radio, am/fm stereo, air cond., ti gl., 15 defro. 20,977 mi. W.A.S. \$6995.
\$4295	\$3795	\$8195

FREE TANK OF GAS WITH EVERY NEW '85 & '84 PURCHASE

Township bulletin board

(Items for the Belleville Bulletin Board may be sent to P.O. Box 56, Belleville, N.J., dropped off at 800 Bloomfield Ave., Nutley, or telephoned to The Times at 759-3200. There is no charge for this public service. Belleville organizations are urged to list future events well in advance so the weekly listing of events can serve as a "clearing house" for other groups attempting to avoid conflicting dates.)

THURSDAY, APRIL 4
1 p.m. Essex County Department of Parks Senior Citizens Club - Belleville Ave., in the park.
1 p.m. Regular monthly meeting, Belleville Chapter 2051, American Association of Retired Persons - Fewsmith Memorial Presbyterian Church Hall, 444 Union Ave.
6:30 p.m. Kiwanis Club - San Carlo Restaurant, 620 Stuyvesant Ave., Lyndhurst.
6:30 p.m. Optimist Club (Belleville Chapter) - Branch Brook

Manor, 13 Washington Ave.
7:30 p.m. Fireman's Mutual Benevolent Association (FMBA) - Fire Headquarters, 434 Washington Ave.
8 p.m. Joseph McGreevy Civic Association meeting
8 p.m. Rent Leveling Board - 383 Washington Ave.
8:30 p.m. Al-Anon meeting for relatives of alcoholics. New members should arrive at 8. For information, call 744-8886 - Christ Episcopal Church, 393 Washington Ave.

FRIDAY, APRIL 5
1 p.m. Belleville Senior Citizens' Social Club meeting - Recreation House, Franklin Avenue at Mill Street.

MONDAY, APRIL 8
1 p.m. Essex County Department of Parks - Belleville Avenue in the park.
Woman's Club open house for bridge - 51 Rossmore Place.
8 p.m. Annual organizational meeting of the board of education - Board complex, 190 Cortland St.
8 p.m. Elks Lodge 1123 meeting - Lodge building, 254 Washington Ave.
8:30 p.m. Belleville Knights of Columbus Council 835 - 94 Bridge St.

TUESDAY, APRIL 9
9:30 a.m. Belleville Old Guard - Fewsmith Memorial Presbyterian Church, 444 Union Ave.
1 p.m. Belleville Senior Citizens Club - 125 Franklin Ave.
Moose Club officers' meeting - 22-28 Eugene Place.
7 p.m. Board of commissioners' pre-meeting conference - Town Hall, 152 Washington Ave.
8 p.m. Board of commissioners' meeting. A public hearing on the municipal budget will be conducted - Town Hall, 152 Washington Ave.
8 p.m. Catholic Daughters of America, Court Sancta Maria 61 - Knights of Columbus Hall, 94 Bridge St.

Religious Viewpoint

How safe is safe?

By The Rev. Robert Paul
Grace Baptist Church

Security is a popular word these days and often seems to be the main objective in life. Folks feel that if they have a little "nest egg" tucked away, they can relax. It is good to have a "nest egg," but how safe is safe, and how permanent are earthly possessions?

A rich industrialist in Los Angeles placed his securities and foreign currency in a 3-foot wide safe on the 12th floor of his building and had the safe placed in a concrete vault. This indeed seemed to be a safe place. But was it?

One Saturday night thieves broke into the building and with crow-bars and an acetylene torch were able to pry the vault loose, and stole what amounted to \$90,000.

Riches can be a mighty blessing, but the Holy Scriptures warn us never to trust in our riches, however much or little they might be. St. Matthew 13:22 warns of the deceitfulness of riches, and that "the love of money is the root of all evil." (1st Tim 6:10.)

St. Paul said to Timothy, "Charge them that are rich in this world, that they be not high-minded nor trust in uncertain riches, but in the living God, who gives us richly all things to enjoy." If you wish to play it safe for time and eternity, you must not trust in safes of vaults, but in the living God. (St. John 1:12.)

Andrew Carnegie, the multi-millionaire, said, "Millionaires seldom smile." W.H. Vanderbilt said, "The care of \$200 million is too great a load for any brain or back to bear. It is enough to kill anyone. There is no pleasures in it."

"The poorest man I now is the man who has nothing but money," said John D. Rockefeller Jr. Lay not up for yourselves treasures upon earth...where thieves break through and steal; but lay up for yourselves treasures in heaven...where thieves do not break through and steal. For where your treasure is, there will your heart be also. (St. Matthew 6:19.)

Money will buy a bed, but not sleep; books but not brains; food but not an appetite; a house but not a home; medicine but not health; a church pew, but not heaven. Heaven is not for sale; God wants you to become a part of his family by inviting the Lord Jesus Christ into your life and while salvation is free, it is not cheap. "The gift of God is eternal life, through Jesus Christ." (Romans 6:23.)

Maintenance keeps roads from forming potholes

The pothole season is now under way in New Jersey and will continue for at least two months, but there is some good news to report. The Department of Transportation predicts that motorists will see fewer potholes on the State Highway System in 1985 than they have experienced in previous years.

The most important factor in making this prediction, according to John F. Dunn, chief, NJDOT Bureau of Maintenance, was the resurfacing effort during 1985 when approximately 450,000 tons of bituminous concrete was placed on deteriorated highways to create new riding surfaces for 350 lane miles. Most of this work was funded by Governor Kean's Transportation Trust Fund.

Dunn believes that the pothole problem will further be reduced in 1986 with the continuation of the Trust Fund stable funding program for highway resurfacing portion of the Trust Fund.

Another reason to predict a mild pothole season, according to Dunn, is the fact that New Jersey did not experience a freeze until after the first of the year. The existing structural integrity of the roadway surface, coupled with water, temperature (freezing and thawing) and traffic violations are major factors that contribute to the severity of the pothole problem.

Repairing potholes along the more than 10,000 lane miles on the State Highway System is given a high priority by the department's field maintenance forces. Throughout the winter, crews apply temporary patching, called "cold patch," to potholes.

The department asks motorists to call 648-2550 8:30 a.m. to 4:30 p.m. if they spot a pothole on the state highway system. Potholes on local and county roadways should be reported to the appropriate authority and not to the Department of Transportation.

Reserve Now For Our
**TRADITIONAL
EASTER SUNDAY
DINNER**

**20th ANNIVERSARY
CELEBRATION**

April 19-20-21
Starring
NELSON SARDELLI

Dinner, Dancing & Merriment
Special Menu
2 Shows Sun., April 21
Call now for Reservations
622-6221

**DON'S "21"
RESTAURANT**
McCarton Highway & Bridge St., Newark
622-6221 - Ample Free Parking

Spring Session

BABY GARDEN
Now in Teaneck & Clifton!
You're invited to experience a unique, creative parent-child play environment. Discover for yourself how a roomful of child-size delights, and the delight it brings your child.

5 Age Groups:
4 months-4 years
45 minute classes

12 Week Session \$89
April 1 - June 21
St. Peter's Episcopal Church*
390 Clifton Ave.
Save \$10.00
Join with a friend by April 28th
you will each receive a \$10.00 rebate

what a way to grow!
Call for free brochure 232-1699

*Baby Garden is an independent program with no religious content

Resident shares chess team win

Seton Hall Preparatory School's "A" Chess Team tied for first and second place in the northern section of the N.J. High School Team Championship recently held at Montclair High School.

The Prep's "B" team of Trushar Sheth of Belleville, Nestor Handzy, Louis Shelley, and Damien Handzy of Maplewood, Charles Prothero of Glen Ridge, and Feratle Paul of South Orange place second in this division.

Welcome Back!

We would like to thank our many customers for patronizing us during this 2 year inconvenience. We are still serving the same delicious food as we have in the past and we look forward to serving you again on a regular basis.

TRY OUR
Breakfast, Lunch & Dinner Specials
Unlimited Coffee with Breakfast
• Baking Done On Premises Daily
• Cocktails Served
• Open 24 Hours

the Lyndhurst

540 Riverside Ave.
Lyndhurst, N.J.
933-7660

GOOD HEALTH PHARMACY
(formerly Laterza's)
313 UNION AVE. BELLEVILLE
759-2761

Free Pick-Up & Delivery
We Welcome Charges

SUPER SAVE SPECIALS STILL ON SALE FROM LAST WEEK

Buy One - Get 2nd Item For 1/2 Price
(excluding sale items)

Pepto Bismol 4 oz. \$1.39
Super Poli-Grip 1.4 oz. \$1.89
Vaseline Petroleum Jelly 3 3/4 oz. \$1.19
Keri Lotion 13 oz. \$5.79
Toni Silkwaves \$2.99
Q-Tips 170's \$1.29
Fluorid 10 oz. \$1.69
Polident 84 + 12 free \$3.29
Selsun Blue Shampoo 4 oz. \$2.29

Toni Body Perm Refill \$2.99
Noxzema Skin Cream 6 oz. \$1.69
Benlyn Cough Syrup 4 oz. \$2.19
Bayer Aspirin 100's \$2.29
Alka-Seltzer Plus 20's \$2.09
Co-Tylenol Cold Capsules 20's \$3.09
Co-Tylenol Cold Tablets 24's \$3.09
Clearasil 0.65 oz. \$2.29
Traac II 5's \$2.19

Registered Pharmacists on Duty
Al Crovatto
William Lynch
John Diomede

We Carry For The Entire Family ...
Baby Needs * Formula * Diapers * Bottles * Toys
Dr. Scholl's Foot Centers * Nature's Bounty Vitamins
Cards * Cigarettes * Russell Stover Candy Center

EASTER CANDY AND BASKETS AVAILABLE
Toy Easter Rabbits 89¢ and up
We will be closed Easter Sunday
Open Good Friday and open Saturday until 6 P.M.

ATTENTION:

Future T.V. Stars of America!

Available immediately, more than 20 part time openings at OBC-TV's Nutley facility for in-studio and field production programming.

* Ideal for college communications majors
* Day - Evening - Weekend Hours Available

Internships for both credit and non-credit also available

(A non-credit volunteer internship is an excellent way to acquire minimum experience needed to move ahead to a paid part time position at OBC-TV Channel 36.)

Pays Minimum to \$4.75/hr. depending on experience.

Call Us Today - 661-2345

Variety of shows scheduled for OBC

Thursday, April 4
 7-12 noon OBC Newshour
 12-5 pm OBC Classified
 5-9 pm OBC Newshour
 9 pm Browning with Pat Diana
 10 pm - 7 am OBC Classified
Saturday, April 5
 7-12 noon OBC Newshour
 12-5 pm OBC Classified
 5 - 9 pm OBC Newshour
 9 pm - 9 am OBC Classified
Sunday, April 6
 7 am - 12 pm OBC Classified
 Monday, April 7
 7-10 am OBC Newshour
 10 am Ionias Pasick Program
 10:30 am - 4:30 pm OBC-TV Classified
 4:30 pm Ionias Pasick Program
 5 pm OBC-TV News for Nutley
 5:15 pm. OBC-TV News for Belleville
 5:30 pm OBC-TV News for Bloomfield
 5:45 pm OBC-TV News for Clifton/Passaic
 6 pm OBC-TV News for Nutley
 6:15 pm OBC-TV News for Belleville
 6:30 pm OBC-TV News for Bloomfield
 6:45 pm OBC-TV News for Clifton/Passaic
 7 pm OBC-TV News for Nutley
 7:15 pm OBC-TV News for Belleville
 7:30 pm OBC-TV News for Bloomfield
 7:45 pm OBC-TV News for Clifton/Passaic
 8 pm OBC-TV News for Nutley
 8:15 pm OBC-TV News for Belleville
 8:30 pm OBC-TV News for Bloomfield
 8:45 pm OBC-TV News for Clifton/Passaic
 9 pm Belleville in Person with Howard Halpern
 9:30 pm Bill Gruver Forum
 10 pm To be announced
 11 pm OBC-TV News for Nutley
 11:15 pm OBC-TV News for Belleville
 11:30 pm OBC-TV News for Bloomfield
 11:45 pm OBC-TV News for Clifton/Passaic
Tuesday, April 9
 7-10 am OBC Fwshour
 Nutley News on the hour
 Belleville News :15 past the hour
 Bloomfield News :30 past the hour
 Clifton/Passaic News :45 past the hour
 10 am Ionias Pasick Program
 10:30 am - 4:30 pm OBC-TV Classified
 4:30 pm Bill Gruver's Forum
 5 pm OBC-TV News for Nutley
 5:15 pm OBC-TV News for Belleville
 5:30 pm OBC-TV News for Bloomfield
 5:45 pm OBC-TV News for Clifton/Passaic
 6 pm OBC-TV News for Nutley
 6:15 pm OBC-TV News for Belleville
 6:30 pm OBC-TV News for Bloomfield
 6:45 pm OBC-TV News for Clifton/Passaic
 7 pm OBC-TV News for Nutley
 7:15 pm OBC-TV News for Belleville

leverage
 7:30 pm OBC-TV News for Bloomfield
 7:45 pm OBC-TV News for Clifton/Passaic
 8 pm OBC-TV News for Nutley
 8:15 pm OBC-TV News for Belleville
 8:30 pm OBC-TV News for Bloomfield
 8:45 pm OBC-TV News for Clifton/Passaic
 9 pm Belleville in Person with Howard Halpern
 9:30 pm Bill Gruver Forum
 10 pm To be announced
 11 pm OBC-TV News for Nutley
 11:15 pm OBC-TV News for Belleville
 5 pm OBC-TV News for Nutley
 5:15 pm OBC-TV News for Belleville
 5:30 pm OBC-TV News for Bloomfield
 5:45 pm OBC-TV News for Clifton/Passaic
 6 pm OBC-TV News for Nutley
 6:15 pm OBC-TV News for Belleville
 6:30 pm OBC-TV News for Bloomfield
 6:45 pm OBC-TV News for Clifton/Passaic
 7 pm OBC-TV News for Nutley
 7:15 pm OBC-TV News for Belleville
 7:30 pm OBC-TV News for Bloomfield

OBC-TV-36

11:30 pm OBC-TV News for Bloomfield
 11:45 pm OBC-TV News for Clifton/Passaic
Wednesday, April 10
 7-10 am OBC Newshour
 Nutley News on the hour
 Belleville News :15 past the hour
 Bloomfield News :30 past the hour
 Clifton/Passaic News :45 past the hour
 10 am Ionias Pasick Program
 10:30 am - 4:30 pm OBC-TV Classified
 4:30 pm Belleville in Person with Howard Halpern
 7:45 pm OBC-TV News for Clifton/Passaic
 8 pm OBC-TV News for Nutley
 8:15 pm OBC-TV News for Belleville
 8:30 pm OBC-TV News for Bloomfield
 8:45 pm OBC-TV News for Clifton/Passaic
 9 pm Nutley St. Patrick's Parade
 11 pm OBC-TV News for Nutley
 11:15 pm OBC-TV News for Belleville
 11:30 pm OBC-TV News for Bloomfield
 11:45 pm OBC-TV News for Clifton/Passaic

Financial aid booklets are available at library

The Belleville Public Library has a number of publications available for students seeking financial aid for college. They are as follows: "Application for Federal Student Aid, 1985-86 School Year"; "Higher Education Loan Programs"; "A Guide to the Guaranteed Student Loan and Plus Programs"; and "The Student Guide: Five Federal Financial Aid Programs, 1985-86." These publications are available at the circulation desk. For information on these or other financial aid programs, call the Financial Aid Hotline at 800-792-8670, Monday-Friday, 9 a.m.-5 p.m.

School 4 students test skills in card games for math week

School 4's first and second grades observed "Mathematics Education Week" by participating in a Math Olympics. Under the direction of Miss Rinaldi, Mrs. D'Ambola and Mrs. Bush, students combined their athletic skills with their math skills in games such as "Go Fish," "Bowling For Numbers" and "Math Hopscotch." The children enjoyed all of the events while reinforcing their math concepts.

Happy Easter
from

Sunshine Produce & Market

Farm Fresh
FRUITS • EGGS • VEGETABLES

Welsh
Farm
Products

Imported
Pastas

We Carry Paramount Italian Bread

Michael Dalla Riva Peter Norton
253 Joralemon St. • Belleville 450-0602

MEAT & CHICKEN
CO-OP
The Dollar Stretcher

Split Chicken 99¢ Breasts	Filet Mignon \$1.99 lb.
Sirloin & Shell Steaks \$1.99	Pork Chops Combo \$1.39 lb.
Legs w/Back or Thighs 49¢	Ground Chuck \$1.49 lb.
Wings Drums 59¢ lb.	Chicken \$1.99 Cutlets lb.

Full Line of Lamb and Veal

FREE
1 Dozen Extra Large
EGGS
With This
Coupon

Open Mon. thru Fri. 8-6
Sat. 8:00-4 • Sun. 9-1
Parkway to Hazel St. Exit go to Crooks
Ave. make right down to tracks make left
4 blocks on left.

**235 W. Railway Ave.
Paterson
881-8900**

Start retiring today.

Build tomorrow's retirement fortune with a tax-sheltered IRA Account at Spencer Savings now!

It's never too early, or too late, to start planning for retirement. And right now the incentives are the best ever!
 Today, everyone who works, even those covered by another pension plan, can take advantage of our new Individual Retirement Account (IRA). It makes good sense and lots of money.
 Here's why:
 Every dollar you contribute to your IRA is tax-deductible, right off the top. Plus, all the interest you earn over the years is tax-sheltered until you retire

(when you should be in a much lower tax bracket). So, you save both ways.
 Married working couples can now contribute up to \$4,000 of yearly income. Couples with one working spouse can put away up to \$2,250. And single individuals can contribute a maximum of \$2,000 each year. All tax-deductible. All tax-deferred.
 The sooner you start your IRA, the more money you'll have at retirement. It's that simple. Choose the plan that's best for you and start retiring today. You'll enjoy a much richer tomorrow!

VARIABLE RATE IRA PLAN

- 18-Month Certificate
- \$50 Minimum Opening Deposit
- Interest rate changes monthly
- Interest is Compounded Continuously and Credited Monthly
- Additional Deposits of \$20 or more may be made at any time during the term

**CALL OR STOP IN
FOR CURRENT RATE QUOTES
AND INFORMATION!**

FIXED RATE IRA PLAN

- 2½-Year Certificate
- \$500 Minimum Opening Deposit
- Interest rate remains fixed for term of Certificate
- Interest is Compounded Continuously and Credited Quarterly

**Start Your IRA today —
Retire Rich tomorrow!**

(Federal regulations permit withdrawals as early as age 59½. Premature withdrawals may result in a penalty and loss of tax-deferred status)

Spencer Savings

and Loan Association

GARFIELD • LODI • WALLINGTON • SADDLE BROOK • CLIFTON • LYNDBURST • BELLEVILLE
 PHONE NUMBER FOR ALL OFFICES • 772-6700

Member FSUC

Bernies Youth Center
proudly announces the
GRAND OPENING
of its

KID'S ATTIC

One flight up ♦ for really down ♦ to earth prices!

**EVERY ITEM
IN STORE
1/2 PRICE**

plus 11%!

All Top Name Brands, All first quality.
From Infant to 14!

Kids' Attic

bernie's
Youth Center

You've got to see
our prices for yourself
to believe them. Get
to know us... We're
sure to be a regular
stop on your shopping list!

46 Park Avenue, Rutherford

SPRING HOME IMPROVEMENT

Try A Do-It-Yourself Project This Spring

Gazebos and greenhouses are not as common as decks, but many people opt for them because they blend better with the design of their home. A gazebo can add a look of enchantment to your backyard and provide shade for hot summer days. If you do have a sunny backyard, you might take advantage of the sunlight and build a greenhouse. Spring is a perfect time to stock the greenhouse with plants. The weather is milder and plants are entering their most fertile growing season. Start a healthy crop now, and you will have plants to transplant in your yard next spring.

Patios or decks are the latest rage in home add-ons and not without good reason. If you have put off building a deck or adding a patio because of tight economic times, now may be an appropriate time to make the investment. Families are enjoying time outdoors, and with help from a hardware or lumber salesperson, even a beginning Do-It-Yourselfer can add on to their family's recreational area.

Usually, all building materials and supplies can be purchased from the same retail store. Many retailers offer kits, complete with blueprints, pre-cut wood and supplies. This package deal includes plans, returning to the store for additional materials and leftover supplies.

Once all new additions to your yard have been made, it's time to clean up the mess and do any final repair work. Make sure the roof is in good shape after the winter weather if you live in a cold or windy climate. Clean the gutters and drainpipes of debris. Patch any concrete that is broken. Repair all screens.

If you have a frame house or one with extensive wood trim, you can add a fresh coat of paint to enhance the new look. If you own a brick home, repair any faulty spots to project a well-kept image.

For final touches, you may plant additional shrubbery, prune your trees, plant flowers or build a rock garden. Shrubbery and bedding plants can be found at hardware stores and home centers, while colored rock or wood chips are usually found at hardware stores or lumber/building material centers.

If you have questions when beginning or in the middle of a Do-It-Yourself project, go to your local Do-It-Yourself hardware, home center or lumber and building material stores. Most have valuable knowledge and can offer practical recommendations for proper procedures, equipment needed or specific product performance. In addition to personal advice, there are how-to books and brochures to take home as a reference and while completing the project.

Don't Take Your Chimney for Granted!

Everyone loves the warmth generated by a cozy fireplace or woodstove, but to keep the fire "friendly," it's important to maintain both your woodburning appliance and your chimney.

Studies from the Consumer Product Safety Commission show that home fires related to woodburning most often originate around the chimney or stove pipe. You can avoid the threat of such fires by following a few guidelines:

1. Use only the chimney and stovepipe specified in the installation instructions. Factory-built fireplaces always come with a chimney designed for use as an integrated part of the fireplace system, and stove manufacturers will specify the kind of chimney to be used with their stove. Be sure that the chimney you choose is approved by local code officials.
2. If you are using a metal chimney, make sure it's not installed too close to combustibles. If you've added insulation in your home, check your attic to see that the insulation is not resting up against the chimney.
3. If you are using a masonry chimney, check on the condition of the liner, and also watch for other signs of deterioration.
4. Keep the chimney at least three feet higher than the place where it exits the roof and two feet higher than any roof within 10 feet. (That is a minimum, and it could be increased.)
5. Don't overload your chimney by building too large a fire. But installing the right chimney the right way is just the start. You must also keep that chimney clean to keep it safe.

Cresote is an unavoidable by-product of wood combustion, and as you use your woodburning appliance, cresote will build up on the sides of the chimney and stovepipe. Cresote is highly flammable, and if allowed to build up, it may ignite, causing a full scale chimney fire.



To avoid such fires, have your stovepipe and chimney inspected regularly (especially if you change the kind of wood you burn or if someone new is operating the stove or fireplace), and have the chimney cleaned when cresote accumulates from 1/8 to 1/4 inch.

Using chemicals or burning particular kinds of wood, will not prevent the accumulation of cresote. But you can reduce cresote formation with the following burning techniques:

- When lighting a stove or fireplace, make a blazing fire for about 30 minutes to bring all surfaces up to operating temperatures. Some cresote is vaporized during this warm-up period.
- Burn shorter, hot fires as opposed to long smoldering ones.
- When loading fresh fuel, burn it hotter in the beginning. This will wrap each wood piece with a high-temperature charcoal layer and help it burn cleaner.

For more information on chimney safety, write to the Wood Heating Alliance, the trade association for the residential woodburning industry, and request their pamphlet "How Does Your Chimney Stack Up?" Send a self-addressed stamped envelope to WHA, Dept. WB, Suite 700, 1101 Connecticut Ave., NW, Washington, DC 20036.

ENERGY SAVING TIPS

Energy Fact

Natural gas is delivered to 160 million Americans each day via pipeline system.

Fully load clothes dryers and dish washers to save energy. Turn off unnecessary lights and appliances.

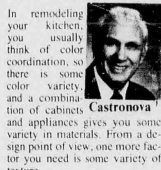
Use a thermometer or timer to eliminate over or under cooking.

Keep direct sunlight out of living spaces in summer, but let it in during winter, it helps warm the room.

KITCHEN, BATH & HOMEINTERIOR IDEAS

For Ultimate in Design, Don't Overlook Texture

Brought To You By John P. Castrovina C.K.D.



In remodeling your kitchen, you usually think of color coordination, so there is some color variety, and a combination of cabinets, appliances gives you some variety in materials. From a design point of view, one more factor you need is some variety of texture.

Think about it. If you have appliances, which are smooth and shiny and steel, plus shiny, smooth flooring, plus contemporary cabinets which are shiny and smooth, the textures are all the same. It might look great, but variety is needed or boredom can creep in—not easy to recognize, but it will be there.

It's not really a problem. It is just a factor to be recognized, and then it can be dealt with. It is one of the design factors that separate the good from the truly excellent.

You can vary it with wall fabric, even on only one wall. You even can provide the needed contrast in texture with wall decorations. Or you can add a textured surface on a refrigerator door.

There are countless ways to do it. But a good design will always have a little texture variation.

Our designers can help you with such weighty issues. So why not visit us soon?

PARAMOUNT KITCHENS

Nutley showroom
291 Bloomfield Ave., Nutley, NJ 07110
(201) 484-2452
Factory showroom
211 Central Ave. Harrison, NJ 07029
(201) 667-9065

759-1161 KING

OF BELLEVILLE
WHERE YOU BUY WITH CONFIDENCE SINCE 1950
YOUR FULL SERVICE HOME IMPROVEMENT CO.

STORM WINDOWS
PATIO & WINDOW AWNINGS
SLIDING GLASS DOORS
SIDING - ALUM/VINYL
TUB & SHOWER ENCLOSURES
CUSTOM MIRROR INSTALLATIONS
BATHROOM REMODELING
SHUTTERS
FENCES
BASEMENT WINDOWS



SHOWROOM
105 WASHINGTON AVE.,
BELLEVILLE, N.J.

REPLACEMENT WINDOWS
GREEN HOUSES
WROUGHT IRON RAILINGS
ALUMINUM RAILINGS
DOOR HOODS
REPLACEMENT DOORS
GARAGE DOORS
STORM DOORS
VERTICAL/
HORIZONTAL BLINDS
SHADES

FACTORY GUARANTEE PROFESSIONAL INSTALLATION SCREEN & GLASS REPAIRS

Lawn Gone?



Time to call Lawn King

All lawns need an annual program of lawn care and every program must contain both granular and spray. Some chemicals work better when applied in a granular form, and others, like weed controls and post emergent crab grass controls, work better in a liquid form. All lawns also require periodic aeration and seed, but only Lawn King gives all these via LAWN COMBINE & SPRAY - THE BETTER WAY WE KNOW IT'S THE ONLY WAY!!!

LAWN KING ANNUAL PROGRAM

1. Balanced Fertilization Broadleaf Weed Control Pre-emergent Crab Grass Control Control	2. Balanced Fertilization Broadleaf Weed Control Chinch Bug Control Sod Weevilworm Control Grub Control	3. Balanced Fertilization Broadleaf Weed Control Mow Nutrients Chinch Bug Control Sod Weevilworm Control Grub Control	4. Power Aeration Power Rolling Balanced Fertilization Broadleaf Weed Control Post-Emergent Crab Grass Control Seed (1 lb. 1000) Line	5. Fertilization Weed Control Line
---	--	--	---	------------------------------------

We are chemical applicators, not miracle workers. We know what your lawn needs and when it needs it. What you see in the program is what you get. Top quality chemicals and seed - only the best - that's all we use. There's no such thing as a specially formulated for drought.

Aeration, seed and time are part of our program. Flange controls and grub controls have always been part of our program, not options at extra cost when you need them. By the time you know you need them it's too late anyway.

Someone will call to discuss the lawn with you. There's a one time charge if you need any extra like a preparatory service, extra seed or additional time. We'll tell you what you need. We may not be the cheapest lawn service around but we are the only ones who give you lawn everything it needs at a price you can afford to pay. You can figure your costs from the chart below. No contracts to sign, no guarantees, no promises, and no nonsense. Pay from service to service or prepay for the year and we'll give you a 5% discount too!

If you compare our program and prices with any other company, you'll find that either they are charging too much, or we are not charging enough! Look at it real close and you may even arrive at the conclusion that not only is it better to do business with us - it's cheaper too!

OPTIONAL PREPARATORY SERVICE

Double Power Aeration Double Power Rolling Double Weed Control	Balanced Fertilization Foliar Control Grub Control (Granular)
--	---

1" PER SQUARE FOOT (min. 3,000 sq. ft.)

Lawn King

SQUARE FOOTAGE	QUARTERLY INSTALLMENT	TOTAL ANNUAL COST
2000	\$8.25	\$32.95
4000	\$16.50	\$65.90
6000	\$24.75	\$98.85
8000	\$33.00	\$131.80
10000	\$41.25	\$164.75

LARGER LAWNS PRICED PROPORTIONATELY
ALL PRICES PLUS SALES TAX



LAWN GONE?

Time to Call...



Lawn King

Nutley, Belleville, Bloomfield
994-2255/743-1025

Lawn King
with this coupon
\$10.00 OFF or 5%
On Your First Year's Service (Minimum 3,000 sq. ft.)
Limit one coupon per customer. Coupon valid with new customers only.

Reid's EST. 1949
DECORATING & UPHOLSTERING CO.

• Custom Made Draperies
• Vertical Blinds
• Mini Blinds
• Shades
• Foam Cushions Refilled

• Reupholstering and Repairs
• We Sell and Install Carpet
• Plastic Slipcovers
• Custom made fabric Slipcovers
• No Job Too Large Or Too Small

Commercial and Residential

15% OFF Senior Citizen Discount
With this ad

511 Bloomfield Ave. Montclair, N.J.
744-6644 or 627-5533

Offer Expires April 30, 1985
Parking in Rear Of Store
MasterCard, Visa, AM. Ex.
Mon-Fri. 9-6, Sat. 9-4

GANTNER'S INC.
160 Franklin Ave., Nutley
Housewares - Hardware - Electrical & Plumbing
Supplies - Home Furnishings - Stationery - Paint

Corningware
Revere
Children & Infant Clothes

Correlle
Farberware
T-Fal

FOR EASTER

Easter Toys
Easter Baskets
Easter Candy

Whitmans Chocolates
Easter Cards
Stuffed Animals

EASTER PARADE OF VALUES

Mon. Fri.
Tues., Wed., Thurs. Sat.

9:00 a.m. to 8:15 p.m.
9:00 a.m. to 5:45 p.m.

667-6622

Solar Siding & Home Improvements

Enhance Your Home

CUSTOM RESTORATIONS
Vinyl • Aluminum Siding & Shakes
Insulation • Gutters & Leaders • Aluminum Trim Jobs

We've satisfied thousands of customers in the past 24 yrs. in New Jersey including schools, churches and many private homeowners in Nutley. Call for a fair & honest estimate. For top quality workmanship approved by organizations such as Nutley Board of Education, Franklin Reformed Church, St. Paul's Congregational Church

Call 667-6115
Denny Pierro
89 Chestnut St. Nutley, N.J.

St. Mary's Church honors Sisters of Charity May 1

St. Mary's School has been staffed by the Sisters of Charity of St. Elizabeth since September 1921, when three nuns, Sister Liorinda, Sister Rose Virginia and Sister Claire Eileen began teaching in Nutley's first parochial school. A stained-glass window in the present church memorializes these nuns and Sister Anna Celeste, who joined the staff in 1922, and served as principal for 27 years from 1933 until 1960.

The Sisters of Charity of St. Mary's Parish will be honored at

a dinner 7 p.m. May 1 at the Palace Restaurant, Kings court, Lyndhurst. Tickets are \$15 and can be purchased at the rectory or by calling 751-4352 or 667-0470.

Present and former members of the parish and community, as well as alumni of St. Mary's School and former teachers and priests who have served in the parish, are invited to attend this dinner, which will commemorate the 125th Anniversary of the founding of the Sisters of Charity of St. Elizabeth.

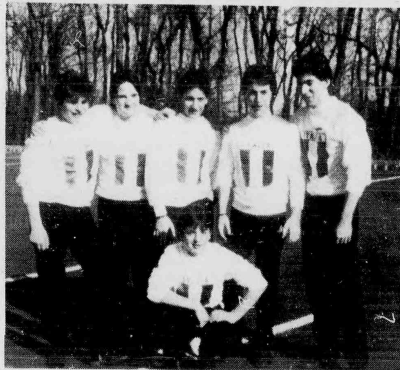
High school guidance office will remain open extra hours

The Belleville High School Guidance Office will be open over the dinner hour until 7 p.m. on designated days.

The schedule is as follows: April 10, Miss Candiloro and Mr. Esposito; April 17, Mr. Cafone and Dr. Benninger; May 1, Miss Herelick and Miss Williamson;

May 8, Mr. Kennelly and Mr. Esposito; May 14, Mr. Cafone and Miss Williamson; and May 21, Miss Candiloro and Dr. Benninger.

Any student, parent, or alumni member can make an appointment by calling 751-4338.



"Italian Stallions"

Local musical group wins state 'pop' competition

The "pop" combo members of the musical group known as the "Italian Stallions" received first honors in the senior "pop" division at the state competition recently held at Somerset Hilton in Somerset, March 8-10.

The members are Marino, Carmen and Donato Rizzi, cousin Fred Rizzi, Enrico Luciano and Stephen Salerno.

The group members are all Belleville residents who were brought together at the DeBellis Performing Arts Center in Newark, where they take music training by their coach Theresa Gillick and Rick Ketay. They have been preparing for the

competition since November 1984.

The group plans to participate in the national competition at Disney World Complex in Orlando, Fla. July 6-11.

SHERIFF'S SALE

SUPERIOR COURT OF NEW JERSEY, CHANCERY DIVISION, ESSEX COUNTY, DOCKET NO. F-6000-84 RITA J. LONDELL and WILLIAM J. LONDELL, JR. PLAINTIFFS vs. BARN I. MADDEN and BROADWAY BANK & TRUST CO. DEFENDANTS, Execution For Sale of Mortgaged Premises.

By virtue of the above stated writ of Execution, to me directed, I shall expose for sale by Public Auction, in SHERIFF'S OFFICE, Essex County, Courts Building in Newark, on Tuesday, the 23rd day of April, at one-thirty P.M. (Prevailing Time) all the following tract or parcel of land situated, lying and being in the Town of Irvington, in the County of Essex and State of New Jersey.

BEGINNING at the northeasterly corner of Augusta Street and May Street, thence running (1) Easterly along the Northerly line of May Street 38.58 feet, thence (2) Northerly at right angles to May Street 100 feet, thence (3) Westerly and parallel with May Street 32.76 feet to the Easterly line of Augusta Street, thence (4) Southerly along said line 100.17 feet to the point and place of BEGINNING.

BEING known as Lot 21 in Block E on Map of Irving Park Realty Co., made by Frank T. Shepard, May, 1911.

BEING the same premises conveyed to the Lender, Helen Rita J. Londell by Deed from Lena Ann Salodino, Widow, dated January 23, 1974 recorded January 25, 1974 in Book 446, Page 430, of records for Essex County.

Said premises being commonly known as 85 May Street, Irvington, New Jersey.

The approximate amount of the Judgment to be satisfied by said sale is the sum of SIXTY ONE THOUSAND FOUR HUNDRED THIRTY FOUR DOLLARS AND NINETY FOUR CENTS (\$61,434.94), together with the costs of this sale.

The Sheriff reserves the right to adjourn the sale from time to time as provided by Law, Newark, N.J. March 18, 1985.

THOMAS J. D'ALESSIO, Sheriff
Foley & Goxi, P.A. Attorneys
The Belleville Times
Mar. 28,
Apr. 4, 11, 18, 1985
Fee: \$99.40
No. 885-121

SHERIFF'S SALE
SUPERIOR COURT OF NEW JERSEY, CHANCERY DIVISION, ESSEX COUNTY, DOCKET NO. F-4015-84 FEDERAL NATIONAL MORTGAGE ASSOCIATION, a Corporation organized by an Act of Congress, PLAINTIFF vs. MR. BETTERSON, husband of Irene Betterton, et al, DEFENDANTS, Execution For Sale of Mortgaged Premises.

By virtue of the above stated writ of Execution, to me directed, I shall expose for sale by Public Auction, in SHERIFF'S OFFICE, Essex County, Courts Building in Newark, on Tuesday, the 23rd day of April, at one-thirty P.M. (Prevailing Time), Property to be sold is located in the City of East Orange, County of Essex and State of New Jersey.

Premises is known as: 8 Winans St. Apt's File #6388
Tax Lot #24, Block #373
Approx. Dimensions: 35 x 110.10 irreg.
Nearest Cross Street: Williams Street 791.17

A complete description can be found in the Essex County Register's Office.
The approximate amount of the Judgment to be satisfied by said sale is the sum of THIRTY THREE THOUSAND TWO HUNDRED TWENTY EIGHT DOLLARS AND NINETY NINE CENTS (\$33,228.99), together with the costs of this sale.

The Sheriff reserves the right to adjourn the sale from time to time as provided by Law, Newark, N.J. March 18, 1985.

THOMAS J. D'ALESSIO, Sheriff
Edward Castel, Attorney
The Belleville Times
Mar. 28,
Apr. 4, 11, 18, 1985
Fee: \$75.20
No. 885-122

'Meet the Athletes' set for Saturday afternoon

Belleville residents will get a chance to meet their favorite professional athletes at "Meet the Athletes" Saturday, April 6, from 12-3 p.m. at the Parks and Recreation Building, 44 Park Ave., Nutley.

Scheduled to appear are Darryl Dawkins, Mike O'Koren and Duncan, team mascot, of the N.J. Nets; John Joyce of the N.J. Generals and team mascot The General; Stan Waldemore of the N.Y. Jets; Hubert Birkmeyer of the Cosmos; and Tom Fleming, track star.

Admission is \$2. All proceeds will go to the Noelle Leukemia Foundation to support the medical expenses of 6-month-old Noelle Moscola of Nutley.

For tickets, call the Noelle Leukemia Foundation at 667-0748.

Raffles will include autographed footballs, hockey

sticks, free game tickets, soccer balls, and more.

Easter egg hunt this Saturday in local park

The Belleville Optimist Club will sponsor its annual Easter Egg Hunt Saturday, April 6, at 9 a.m. in Belleville Park (off Mill Street).

Prizes will be awarded. Rain date will be Saturday, April 13, at 9 a.m.



CHIRO NEWS

"HOMOSTASES"
We all live and move and function by a process called homeostasis. Homeostasis is the ability of the body to maintain normal balance and body function in spite of the abuse we give it every day. Every once in a while someone says to me, "It's amazing how many people have heart disease, and high blood pressure, and cancer and diabetes, and arthritis, and indigestion, etc. But truly, what trait it assures me is how the body can manage to stay alive as long as it can, considering how most people live."

Right now homeostasis may be trying to neutralize the acid from that coffee you just drank. It's trying to keep your blood sugar level between 80-110 despite the sweet roll you ate and coke you swished it down with. Homeostasis keeps your body temperature at exactly 98.6 whether you go to the Sahara Desert 120 degrees above zero or the North Pole, 80 degrees below zero. You see, the body has the miraculous ability to adapt to stress and abuse. Especially while we are young, it seemed that we could eat mints and maintain our health, as we laughed and scoffed at people who were health nuts who tried to take good care of themselves. Gradually and slowly the homeostasis mechanism of the body breaks down.

Homeostasis is controlled by the brain and nervous system. If a chiropractor specializes in holistic health care, he can also incorporate teaching the principles of a healthy lifestyle to let homeostasis work for you. Why not listen to your body and seek a natural, painless and drugless approach to health today. You'll be glad you did.

Now is Girl Scout Cookie time.



for a great cause:

VIVA LA NAILS

- Manicures
- Pedicures
- Tips & Wraps
- Cosmetics
- Cosmetic Makeovers
- Painless Hair Removal

5 James St.
Bloomfield, N.J.
(corner of Broad St.)

Call for Appointment
Phone 429-2994

ORTHODONTICS



AFFORDABLE BRACES FOR CHILDREN & ADULTS

CONVENIENT HOURS (EVENINGS TOO!)

DENTAL INSURANCE WELCOME

SECOND OPINIONS PROVIDED

NEVER A CHARGE FOR CONSULTATIONS
DR. MICHAEL B. FITZPATRICK
484 Washington Ave. Belleville
759-2173



THE KING OF PRICES

BILL TONE'S

Hot & Cold Catering
For Large Or Small Parties
All Cooking On Premises
Featuring Our Old World Italian Recipes

WE DELIVER

667-4877

95 Harrison St., Nutley

Open
7:30 a.m. - 7 p.m.
Weekdays
11:30 a.m. - 6 p.m.
Weekends



REALTY WORLD.

THE RESULTS PEOPLE.
BAUMGARDNER AGENCY

SPECIALIZING IN RESIDENTIAL PROPERTY
FOR OVER 35 YEARS

Services Offered:

- * REAL SAFE - Home Protection Plan
- * REAL LINE - National Referral Service
- * Appraisal Services and Insurance
- * Career Opportunities

Covering

Bloomfield - Glen Ridge - Nutley - Belleville

378 Broad Street, Bloomfield, N.J.

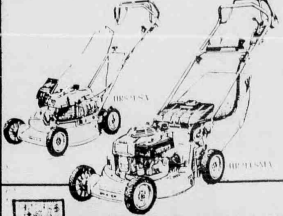
743-8382



JAY BAUMGARDNER GRI BROKER

Trade in and up to a Honda.

Is the old mower going "pitter, shudder, bang?" Or doesn't it run at all? Want to get rid of it? **TRADE INS STARTING AT \$50**



HONDA
Power
Equipment

For optimum performance and safety we recommend you read the owner's manual before operating the unit.
©1985 American Honda Motor Co., Inc.

165 WASHINGTON AVE.
BELLEVILLE
751-4545
751-7727

The Motorcycle Mall

CLASSIFIED ADS sure to get results

In The Nutley Sun, Belleville Times and Bloomfield Life

667-3000 DEADLINE TUES. 12 NOON

THE CHOICE IS YOURS!!



Embark on a new career as a Telephone Representative.

You can work days or evenings and Saturday morning from 10:00 am - 1:00 pm.

The opportunities professionally and financially are unlimited. Guaranteed salary plus commission.

For further details call your number one local newspaper at 667-3000, ask for Sal.

ANNOUNCEMENTS

MARY'S THEATER PARTIES

FOR GROUPS & INDIVIDUALS

Apr. 10 - 42nd Street - Wed. mat.
Apr. 10 - 42nd Street - Wed. mat.
Apr. 21 - 42nd Street - Wed. mat.
Apr. 21 - 42nd Street - Wed. mat.
Apr. 21 - 42nd Street - Wed. mat.

Mar. 30 - "Pavarotti" Trump Plaza

Below includes orchestra seat, dinner, taxes, tip for driver.

20 PASSENGER LUXURY COACHES TO ATLANTIC CITY

998-1268

AUTOMOTIVE

78 BUICK

ELECTRA LTD. ORIGINAL OWNER. GARGED 80,000 MI. 4 DOOR V-8 ALL POWER LOADED. URGENTLY NEW CAR ON WAY WILL TAKE BEST OFFER. CALL 235-1415

Gov't surplus car \$300. Trucks \$100. Now available in your area. Call 1-419-589-0242. 418

71 VEGA - Auto. AM FM converter, runs good, 4 cyl \$350. Call 748-3422

1981 CADILLAC SEDAN DEVILLE. Auto. A.C. R.D.F. P.S. P.B. W. P.L. AM-FM stereo. Call 661-0712

71 PLYMOUTH SPORT SUBURBAN STATION WAGON. 9 PASSENGER. NEW TIRES. EXCELLENT RUNNING CONDITION. \$650. or best offer. Call 429-7946

1972 SEDAN DE VILLE. Dependable transportation. \$600. 288-2000 Ext. 4896. Ask for Riccio

1984 728 CAMARO Fully loaded-high output 8 engine A.C. Black with sports package. 661-3610. Ask for Linda

83 Buick Regal V-6 auto, ps, pb, a/c, am/fm stereo, landro, roof, lift, rear defog. 15.0 00 mi. Asking \$600. Days 667-0808. Eves 429-1461

1975 Mustang 4 spd. A.C. 31,000 original mi. Excel Cond. B.0 997-0702

266-1128 days

74 PLYMOUTH SPORT SUBURBAN STATION WAGON. 9 PASSENGER. NEW TIRES. EXCELLENT RUNNING CONDITION. \$650. or best offer. Call 429-7946

1972 SEDAN DE VILLE. Dependable transportation. \$600. 288-2000 Ext. 4896. Ask for Riccio

1984 728 CAMARO Fully loaded-high output 8 engine A.C. Black with sports package. 661-3610. Ask for Linda

83 Buick Regal V-6 auto, ps, pb, a/c, am/fm stereo, landro, roof, lift, rear defog. 15.0 00 mi. Asking \$600. Days 667-0808. Eves 429-1461

1975 Mustang 4 spd. A.C. 31,000 original mi. Excel Cond. B.0 997-0702

266-1128 days

74 PLYMOUTH SPORT SUBURBAN STATION WAGON. 9 PASSENGER. NEW TIRES. EXCELLENT RUNNING CONDITION. \$650. or best offer. Call 429-7946

1972 SEDAN DE VILLE. Dependable transportation. \$600. 288-2000 Ext. 4896. Ask for Riccio

1984 728 CAMARO Fully loaded-high output 8 engine A.C. Black with sports package. 661-3610. Ask for Linda

83 Buick Regal V-6 auto, ps, pb, a/c, am/fm stereo, landro, roof, lift, rear defog. 15.0 00 mi. Asking \$600. Days 667-0808. Eves 429-1461

1975 Mustang 4 spd. A.C. 31,000 original mi. Excel Cond. B.0 997-0702

266-1128 days

74 PLYMOUTH SPORT SUBURBAN STATION WAGON. 9 PASSENGER. NEW TIRES. EXCELLENT RUNNING CONDITION. \$650. or best offer. Call 429-7946

1972 SEDAN DE VILLE. Dependable transportation. \$600. 288-2000 Ext. 4896. Ask for Riccio

1984 728 CAMARO Fully loaded-high output 8 engine A.C. Black with sports package. 661-3610. Ask for Linda

83 Buick Regal V-6 auto, ps, pb, a/c, am/fm stereo, landro, roof, lift, rear defog. 15.0 00 mi. Asking \$600. Days 667-0808. Eves 429-1461

1975 Mustang 4 spd. A.C. 31,000 original mi. Excel Cond. B.0 997-0702

266-1128 days

74 PLYMOUTH SPORT SUBURBAN STATION WAGON. 9 PASSENGER. NEW TIRES. EXCELLENT RUNNING CONDITION. \$650. or best offer. Call 429-7946

1972 SEDAN DE VILLE. Dependable transportation. \$600. 288-2000 Ext. 4896. Ask for Riccio

1984 728 CAMARO Fully loaded-high output 8 engine A.C. Black with sports package. 661-3610. Ask for Linda

83 Buick Regal V-6 auto, ps, pb, a/c, am/fm stereo, landro, roof, lift, rear defog. 15.0 00 mi. Asking \$600. Days 667-0808. Eves 429-1461

1975 Mustang 4 spd. A.C. 31,000 original mi. Excel Cond. B.0 997-0702

266-1128 days

74 PLYMOUTH SPORT SUBURBAN STATION WAGON. 9 PASSENGER. NEW TIRES. EXCELLENT RUNNING CONDITION. \$650. or best offer. Call 429-7946

1972 SEDAN DE VILLE. Dependable transportation. \$600. 288-2000 Ext. 4896. Ask for Riccio

1984 728 CAMARO Fully loaded-high output 8 engine A.C. Black with sports package. 661-3610. Ask for Linda

83 Buick Regal V-6 auto, ps, pb, a/c, am/fm stereo, landro, roof, lift, rear defog. 15.0 00 mi. Asking \$600. Days 667-0808. Eves 429-1461

1975 Mustang 4 spd. A.C. 31,000 original mi. Excel Cond. B.0 997-0702

266-1128 days

74 PLYMOUTH SPORT SUBURBAN STATION WAGON. 9 PASSENGER. NEW TIRES. EXCELLENT RUNNING CONDITION. \$650. or best offer. Call 429-7946

1972 SEDAN DE VILLE. Dependable transportation. \$600. 288-2000 Ext. 4896. Ask for Riccio

1984 728 CAMARO Fully loaded-high output 8 engine A.C. Black with sports package. 661-3610. Ask for Linda

83 Buick Regal V-6 auto, ps, pb, a/c, am/fm stereo, landro, roof, lift, rear defog. 15.0 00 mi. Asking \$600. Days 667-0808. Eves 429-1461

1975 Mustang 4 spd. A.C. 31,000 original mi. Excel Cond. B.0 997-0702

266-1128 days

74 PLYMOUTH SPORT SUBURBAN STATION WAGON. 9 PASSENGER. NEW TIRES. EXCELLENT RUNNING CONDITION. \$650. or best offer. Call 429-7946

1972 SEDAN DE VILLE. Dependable transportation. \$600. 288-2000 Ext. 4896. Ask for Riccio

1984 728 CAMARO Fully loaded-high output 8 engine A.C. Black with sports package. 661-3610. Ask for Linda

83 Buick Regal V-6 auto, ps, pb, a/c, am/fm stereo, landro, roof, lift, rear defog. 15.0 00 mi. Asking \$600. Days 667-0808. Eves 429-1461

1975 Mustang 4 spd. A.C. 31,000 original mi. Excel Cond. B.0 997-0702

266-1128 days

74 PLYMOUTH SPORT SUBURBAN STATION WAGON. 9 PASSENGER. NEW TIRES. EXCELLENT RUNNING CONDITION. \$650. or best offer. Call 429-7946

1972 SEDAN DE VILLE. Dependable transportation. \$600. 288-2000 Ext. 4896. Ask for Riccio

1984 728 CAMARO Fully loaded-high output 8 engine A.C. Black with sports package. 661-3610. Ask for Linda

83 Buick Regal V-6 auto, ps, pb, a/c, am/fm stereo, landro, roof, lift, rear defog. 15.0 00 mi. Asking \$600. Days 667-0808. Eves 429-1461

1975 Mustang 4 spd. A.C. 31,000 original mi. Excel Cond. B.0 997-0702

266-1128 days

74 PLYMOUTH SPORT SUBURBAN STATION WAGON. 9 PASSENGER. NEW TIRES. EXCELLENT RUNNING CONDITION. \$650. or best offer. Call 429-7946

1972 SEDAN DE VILLE. Dependable transportation. \$600. 288-2000 Ext. 4896. Ask for Riccio

1984 728 CAMARO Fully loaded-high output 8 engine A.C. Black with sports package. 661-3610. Ask for Linda

83 Buick Regal V-6 auto, ps, pb, a/c, am/fm stereo, landro, roof, lift, rear defog. 15.0 00 mi. Asking \$600. Days 667-0808. Eves 429-1461

1975 Mustang 4 spd. A.C. 31,000 original mi. Excel Cond. B.0 997-0702

266-1128 days

MOTORCYCLES

Ducati motorcycle 1980 Desmo S.S. 5,500 original miles \$4,000 or B.O. Call 338-0573 after 6 PM 411

PEUGEOT 1982, 2,000 miles. New condition. Call 667-0453

1981 Honda CM 400 E 2500 miles. Mint condition. \$800. Call 667-4672

AUTO WRECKERS

JUNK CARS WANTED. Free Tow Away. Same Day Pick-Up. S.O.S. TOWING, INC. 429-8471 Bloomfield 481-2610 Newark 423

BILLS AUTO WRECKERS

\$60 and up for Cars or Trucks in any Condition. Belleville Pike. No. Arlington 998-0966

SEALOCOT DRIVEWAYS

Also PATCHUP WORK & CONCRETE WORK. Call for FREE ESTIMATE. NAT PANCARO 667-6083

KEN'S DRIVEWAY SEALING, Res. Rates Quality Work. Call 235-2222 Weekdays after 4 p.m. Anytime Sat. or Sun. 711

CLEANING SERVICES

MODERN AUTO PARTS

Open 7 Days 8:30-5:30 Weekdays 9:00-1:00 Sunday

• PARTS • PAINTS • MACHINE SHOP

Discount Prices 82 Rutgers Street Belleville 759-5555 912

FRANKIE'S TOWING

4 yrs. Hour Service. Junks Wanted! Cars, Trucks, etc. Highest Prices Paid. Call 667-2192 or 344-9493 418

MEADOWLANDS AUTO WRECKERS

Buyers of All Junk Cars Trucks & Vans. Sellers of Used Auto Parts & Everything 991-0180

Call Richie Gallo Open Mon-Sat. 8 a.m. - 5 p.m. 748-3422

1981 CADILLAC SEDAN DEVILLE. Auto. A.C. R.D.F. P.S. P.B. W. P.L. AM-FM stereo. Call 661-0712

71 PLYMOUTH SPORT SUBURBAN STATION WAGON. 9 PASSENGER. NEW TIRES. EXCELLENT RUNNING CONDITION. \$650. or best offer. Call 429-7946

1972 SEDAN DE VILLE. Dependable transportation. \$600. 288-2000 Ext. 4896. Ask for Riccio

1984 728 CAMARO Fully loaded-high output 8 engine A.C. Black with sports package. 661-3610. Ask for Linda

83 Buick Regal V-6 auto, ps, pb, a/c, am/fm stereo, landro, roof, lift, rear defog. 15.0 00 mi. Asking \$600. Days 667-0808. Eves 429-1461

1975 Mustang 4 spd. A.C. 31,000 original mi. Excel Cond. B.0 997-0702

266-1128 days

74 PLYMOUTH SPORT SUBURBAN STATION WAGON. 9 PASSENGER. NEW TIRES. EXCELLENT RUNNING CONDITION. \$650. or best offer. Call 429-7946

1972 SEDAN DE VILLE. Dependable transportation. \$600. 288-2000 Ext. 4896. Ask for Riccio

1984 728 CAMARO Fully loaded-high output 8 engine A.C. Black with sports package. 661-3610. Ask for Linda

83 Buick Regal V-6 auto, ps, pb, a/c, am/fm stereo, landro, roof, lift, rear defog. 15.0 00 mi. Asking \$600. Days 667-0808. Eves 429-1461

1975 Mustang 4 spd. A.C. 31,000 original mi. Excel Cond. B.0 997-0702

266-1128 days

74 PLYMOUTH SPORT SUBURBAN STATION WAGON. 9 PASSENGER. NEW TIRES. EXCELLENT RUNNING CONDITION. \$650. or best offer. Call 429-7946

1972 SEDAN DE VILLE. Dependable transportation. \$600. 288-2000 Ext. 4896. Ask for Riccio

1984 728 CAMARO Fully loaded-high output 8 engine A.C. Black with sports package. 661-3610. Ask for Linda

83 Buick Regal V-6 auto, ps, pb, a/c, am/fm stereo, landro, roof, lift, rear defog. 15.0 00 mi. Asking \$600. Days 667-0808. Eves 429-1461

1975 Mustang 4 spd. A.C. 31,000 original mi. Excel Cond. B.0 997-0702

266-1128 days

74 PLYMOUTH SPORT SUBURBAN STATION WAGON. 9 PASSENGER. NEW TIRES. EXCELLENT RUNNING CONDITION. \$650. or best offer. Call 429-7946

1972 SEDAN DE VILLE. Dependable transportation. \$600. 288-2000 Ext. 4896. Ask for Riccio

1984 728 CAMARO Fully loaded-high output 8 engine A.C. Black with sports package. 661-3610. Ask for Linda

83 Buick Regal V-6 auto, ps, pb, a/c, am/fm stereo, landro, roof, lift, rear defog. 15.0 00 mi. Asking \$600. Days 667-0808. Eves 429-1461

1975 Mustang 4 spd. A.C. 31,000 original mi. Excel Cond. B.0 997-0702

266-1128 days

74 PLYMOUTH SPORT SUBURBAN STATION WAGON. 9 PASSENGER. NEW TIRES. EXCELLENT RUNNING CONDITION. \$650. or best offer. Call 429-7946

1972 SEDAN DE VILLE. Dependable transportation. \$600. 288-2000 Ext. 4896. Ask for Riccio

1984 728 CAMARO Fully loaded-high output 8 engine A.C. Black with sports package. 661-3610. Ask for Linda

83 Buick Regal V-6 auto, ps, pb, a/c, am/fm stereo, landro, roof, lift, rear defog. 15.0 00 mi. Asking \$600. Days 667-0808. Eves 429-1461

1975 Mustang 4 spd. A.C. 31,000 original mi. Excel Cond. B.0 997-0702

266-1128 days

74 PLYMOUTH SPORT SUBURBAN STATION WAGON. 9 PASSENGER. NEW TIRES. EXCELLENT RUNNING CONDITION. \$650. or best offer. Call 429-7946

1972 SEDAN DE VILLE. Dependable transportation. \$600. 288-2000 Ext. 4896. Ask for Riccio

1984 728 CAMARO Fully loaded-high output 8 engine A.C. Black with sports package. 661-3610. Ask for Linda

83 Buick Regal V-6 auto, ps, pb, a/c, am/fm stereo, landro, roof, lift, rear defog. 15.0 00 mi. Asking \$600. Days 667-0808. Eves 429-1461

1975 Mustang 4 spd. A.C. 31,000 original mi. Excel Cond. B.0 997-0702

266-1128 days

74 PLYMOUTH SPORT SUBURBAN STATION WAGON. 9 PASSENGER. NEW TIRES. EXCELLENT RUNNING CONDITION. \$650. or best offer. Call 429-7946

1972 SEDAN DE VILLE. Dependable transportation. \$600. 288-2000 Ext. 4896. Ask for Riccio

1984 728 CAMARO Fully loaded-high output 8 engine A.C. Black with sports package. 661-3610. Ask for Linda

83 Buick Regal V-6 auto, ps, pb, a/c, am/fm stereo, landro, roof, lift, rear defog. 15.0 00 mi. Asking \$600. Days 667-0808. Eves 429-1461

1975 Mustang 4 spd. A.C. 31,000 original mi. Excel Cond. B.0 997-0702

266-1128 days

74 PLYMOUTH SPORT SUBURBAN STATION WAGON. 9 PASSENGER. NEW TIRES. EXCELLENT RUNNING CONDITION. \$650. or best offer. Call 429-7946

1972 SEDAN DE VILLE. Dependable transportation. \$600. 288-2000 Ext. 4896. Ask for Riccio

1984 728 CAMARO Fully loaded-high output 8 engine A.C. Black with sports package. 661-3610. Ask for Linda

83 Buick Regal V-6 auto, ps, pb, a/c, am/fm stereo, landro, roof, lift, rear defog. 15.0 00 mi. Asking \$600. Days 667-0808. Eves 429-1461

1975 Mustang 4 spd. A.C. 31,000 original mi. Excel Cond. B.0 997-0702

266-1128 days

74 PLYMOUTH SPORT SUBURBAN STATION WAGON. 9 PASSENGER. NEW TIRES. EXCELLENT RUNNING CONDITION. \$650. or best offer. Call 429-7946

1972 SEDAN DE VILLE. Dependable transportation. \$600. 288-2000 Ext. 4896. Ask for Riccio

1984 728 CAMARO Fully loaded-high output 8 engine A.C. Black with sports package. 661-3610. Ask for Linda

83 Buick Regal V-6 auto, ps, pb, a/c, am/fm stereo, landro, roof, lift, rear defog. 15.0 00 mi. Asking \$600. Days 667-0808. Eves 429-1461

1975 Mustang 4 spd. A.C. 31,000 original mi. Excel Cond. B.0 997-0702

266-1128 days

74 PLYMOUTH SPORT SUBURBAN STATION WAGON. 9 PASSENGER. NEW TIRES. EXCELLENT RUNNING CONDITION. \$650. or best offer. Call 429-7946

1972 SEDAN DE VILLE. Dependable transportation. \$600. 288-2000 Ext. 4896. Ask for Riccio

1984 728 CAMARO Fully loaded-high output 8 engine A.C. Black with sports package. 661-3610. Ask for Linda

83 Buick Regal V-6 auto, ps, pb, a/c, am/fm stereo, landro, roof, lift, rear defog. 15.0 00 mi. Asking \$600. Days 667-0808. Eves 429-1461

1975 Mustang 4 spd. A.C. 31,000 original mi. Excel Cond. B.0 997-0702

266-1128 days

74 PLYMOUTH SPORT SUBURBAN STATION WAGON. 9 PASSENGER. NEW TIRES. EXCELLENT RUNNING CONDITION. \$650. or best offer. Call 429-7946

1972 SEDAN DE VILLE. Dependable transportation. \$600. 288-2000 Ext. 4896. Ask for Riccio

1984 728 CAMARO Fully loaded-high output 8 engine A.C. Black with sports package. 661-3610. Ask for Linda

83 Buick Regal V-6 auto, ps, pb, a/c, am/fm stereo, landro, roof, lift, rear defog. 15.0 00 mi. Asking \$600. Days 667

HELP WANTED

GENERAL FACTORY T-SHIRT
PRINTING PLANT
CHECK, PACK & FOLD
PERSONS APPLY IN
PERSON NO PHONE
CALLS 8 AM to 3 PM
MONDAY THRU FRI-
DAY.

NATIONAL SALES
368 CORTLAND ST.
BELLEVILLE, N.J.
(1/4 block from K-Mart)

MAIDS PORTER FULL & PART TIME
Excellent company benefits, which include Blue Cross Blue Shield, dental, optical, prescription plan, paid holidays, etc. Apply in person only to:

JAN SWANDER
RANAGUA INN
Rt. 3 East, Clifton, NJ
bet. 9 am - 2 pm

Computer Operators,
telephone answering ser-
vice, no experience, will
train, day eve, midnight
shifts.
Call 731-7500

WAREHOUSE WORKERS
Shipping, receiving,
loading, packing. No exp.
nec. Will train.
Call 731-8386

DRIVER/INSTALLER
Clean New Jersey
license. Knowledge of
Essex & Union Counties
735-6575

BABYSITTER
With light housework.
Part time flexible hours.
Cedar Hill Ave. Belleville
area preferred. 759-
8566

R.D.G. SUPERINTENDENT
Couple needed for gen.
maint. Apt. util. &
phone allowance. Sal.
boths. Please call immed.
661-WO-R-K
Fee pd.

TRUCK DRIVERS
Furniture moving com-
pany. Experience neces-
sary. Good overtime &
benefits. 746-5700.

DRIVERS
Full time to work for a
progressive messenger-
carrier co. Must have
own wt. model, van, or
hatchback.
Call 622-8690

Call for Jersey
12 hour shift
Call 622-8690

RETAIL SPRINGTIME... COLOR IT \$69.99
with a
FULL TIME OR
PART TIME JOB +
IMMEDIATE
DISCOUNT!

Seasonal openings for
CASHIERS
SALESPEOPLE
STOCK
FULL & PART TIME
Experience preferred.
All schedules include
evening & weekend
hours.

APPLICATIONS ACCEPTED MON-FRI 10AM-5PM PERSONNEL DEPT. "B"
FORTUNOFF AT WAYNE
in the
WEST BELT MALL
250 West Belt Mall
Rt. 20, Wayne
Locations Avail.
for Non-Smokers
Equal Opportunity
Employer M/F

CLERK TYPIST \$22.50
If you like to type, my co.
wants you. Letters,
reports, returnee O.R.
Exc. Infts. Fee pd. Call
Phillips at 743-1614.

NATIONAL PERSONNEL
547 Bloomfield Ave.
Bloomfield

K.MART NIGHT TIME EMPLOYMENT
For filling cur-
rents. Open to Tam.
Full time benefits. Apply
Thursdays bet. 2 & 4 pm

K.MART
371 Main St.
Belleville

SWEAHER KNITTER
Need good KNIT-
TER FOR 3 GRADE
KNITTING BULKY
MACHINE. CALL DAY
OR EVENING 955-1073

Helper needed in
silkscreen dept. Full
time. Call 471-8800 Ext.
308

BOYS PREFERRED TO DELIVER CIRCULARS
Must be 15 yrs.
or over. Thurs & Fri.
after school & Sat. morn-
ings. \$3.35 per hr.
235-1618

HELP WANTED

**DRIVER/Warehouse-
man** Person needed to
drive and size truck &
do some warehouse
work. Must have clean
driving record. Full
company pd. bnf. Im-
med. opening. Call for
interview. 481-5545 ask
for Jasper.

HOUSECLEANING
PART TIME 4 HRS.
PER WK. FLEXIBLE.
STUDENT O.K.
667-0639

OFFICE HELP
SMALL COMPANY.
BELLEVILLE. FULL
OR PART TIME. Call
759-6382. ASK FOR
ANNE

HOMEMAKERS
Work from home. For in-
formation call: 973-6649
or 694-3484 Monday - 9:30
am to 1:00 pm

SECURITY
NO STENO
Log Corp. Hldrs. has 3
openings. G2 type for
past office w/ opp. for
advance. Fee pd. Call
Kathy Phillips at 743-
1614

NATIONAL PERSONNEL
547 Bloomfield Ave.
Bloomfield

REAL ESTATE
Salesperson and
Brokers. License
classes are now
forming

GARDEN STATE SCHOOL OF REAL ESTATE
571 Bloomfield Ave.
Verona
For information call
239-1216 or 731-8887

997-8086
\$4.00 per hour
plus comm.
\$15.00 per hr. potential.
Morning & Evening shift.
Telephone Sales. **F**

FURNITURE MOVERS
Full & part time.
Clifton
731-7433

HEALTH/WEALTH
New herbal nutritional
company growing 580
units. No exp. nec.
As seen on TV. Full or
part time. Supervisory
skills essential. Call John
746-5084

Maintenance grounds
person. Full time. In-
taining garden apt. in
N.J. Landscaping &
painting exp. pref.
Call 667-3863
Jim or Jeff

**I NEED RIDE from Port
Elizabeth to Nutley**
weekdays after 5 p.m.
Call Bill 661-1944

Receptionist/Clerk
Typing, Filing, general
office work. Congenial of-
fice. 35 hr. wk. Call for
app. **429-5900**

MEDICAL SECRETARY/RECEPTIONIST
16 hrs per wk. typing
skills essential. Call
748-9474

Local law firm seeks
and/or foreclosure and
bankruptcy clerk. Salary
commensurate with ex-
perience. Call May 78-
2829

DENTAL ASSISTANT
Full time position. Avail-
able for mature minded in-
dividual to work chair side.
Excellent exp. pref. Salary
negotiable. Benefits. Call
Michael 763-4302.

WANTED! Women to
earn \$1000 weekly to be
trained as skin care &
cosmetics salesperson. No
experience necessary.
Part time/full time. Call
for interview.

284-0652

TILLER
NEWARK AREA
M/F. Flex hrs. P.T.E.
Exc. hrs. req. Exp. pref.
but will train, good salary.
Call all 485-4020

F.O.I.

Machine Operators
No exp. nec. Qualified
persons will be trained
on the job. Mechanical
aptitude a plus. Good
salary and bnf. **F**
United Steel Products
672-0407

OFFICE HELP
3 DAYS A WEEK
LIGHT TYPING &
ORDER TAKING. Call
BET HRS 1 & 3 MON-
DAY TO FRIDAY.
472-6900

RECEPTIONIST TYPIST
Heavy typing & phone
accuracy a must. Must
have a pleasant per-
sonality to greet clients.
Very diversified, in-
teresting position. Ex-
perience a must. Must be
dependable. Company
benefits. Hours 9-4:30
P.M. Salary negotiable.
Call 759-5550
ASK FOR ANNE

HELP WANTED

TYPESETTER
EXPERIENCE HELPFUL.
NUTLEY AREA. FLEXIBLE
HOURS. DAYS/EVENINGS. WILL
TRAIN GOOD TYPIST.

CALL 667-2100
CAROL

RESTAURANT
COOKS/PRODUCTION
WAITERS/WAITRESSES

Immediate openings now available full part
time, days and evens. Experience preferred, but
not necessary. Uniforms provided. Food license
Call between 2:30 PM for interview. Ask for Steve
McCroiste, Manager.

156 Main Ave. 774-2553 Passaic, NJ

SWITCHBOARD
TEMPORARIES
(6 PERMANENT POSITIONS)

742 Bergen Blvd.
Belleville, NJ
943-7400

HELP WANTED
The Eastman Chemical
Division of Eastman
Kodak Co. a major
manufacturer of
chemicals, plastic &
fibers, has a challenging
opportunity for a chemist
experienced in molecular
modeling. Individual
should have a M.S. in
chemistry. Knowledge of
protein & peptide struc-
ture, conformational
analysis, & modeling is
essential. Assignment in-
cludes conducting molec-
ular studies directed at
the design of molecules
which would be used to
effect animal production
growth.

The Eastman Chemical
division is headquartered
in Kingsport, Tennessee,
a progressive Tri-Cities
area of North East Ten-
nessee. Individual will
receive a salary com-
mensurate w/exp. &
qualification & an out-
standing employee ben-
efit program. Interested
candidates should send
resume to:

Cheryl Harvey
Personnel Dept.
Tennessee Eastman Co.
PO Box 1975
Kingsport, Tennessee 376
62 471-3600

Machine Operator; help-
ing in Silkscreen Dept.
Full time. Call 471-2800
Ext. 308

LABORERS FOR SER-
VICE CONTRACTOR TO
TRAIN & DEVELOP
INDIVIDUALS INTO WORK-
ING MEN. REQUIREMENTS
HAVE N.Y. DRIVING
LIC. & ABILITY TO
WORK WITH PHARMACEU-
TICALS. TRANS. LIBERAL
BENEFITS. APPLY AT
760 N. SUMMER AVE.
NEWARK, N.J. (BEL-
LEVILLE NWK LINE)
(Mary Ellen 483-9400)

RECEPTIONIST
PART TIME EVENING
WEEK-ENDS
Large Real Estate
Management firm is
seeking individual with
front office attitude to
assist in client service.
Clients Applicant should
have good typing/plac-
ing telephone man-
ner, willingness to accept
many diversified
duties, strong organiza-
tional ability. Previous
experience a must. Evening
hours 5:30 P.M. - week-
ends 9:30 P.M. For inter-
view call Lynne Tomen.
951-5500

govt realtors
727 Joralemon St.
Belleville

K.MART
Application applications for
full & part time posi-
tions. Mornings, after-
noons, evenings.
Outside maintenance,
check outs, auto &
sporting goods.

SEMI RETIRED OR RETIRED
FLEXIBLE HRS. AVAIL. IN OUR A.C.
PACKING DEPT. \$4.25 HR. STEADY
WORK. INTERVIEWS FRIDAY 4/5/85
10:30-3:30 EXECUTIVE COFFEE CO. 187
CORTLAND STREET, BELLEVILLE.

AUTOMOTIVE MACHINIST
Full time. Knowledge of drum turn-
ing, valve grinding, engine rebuilding helpful.
Will train energetic, willing to learn
person. Pleasant working conditions, well
lit shop, overtime. All benefits. Apply in
person.

SALLY'S AUTO PARTS
75 Franklin Avenue

DRIVER
Knowledge of New York City,
New Jersey and Long Island areas.
Office services required when not
driving. Liberal company benefits.

CALL PERSONNEL
997-3000

COMPUTER OPERATOR
Operate a large scale computer with
related duties. 2.5 years experience on
370/148 with 4341 on order/install Liberal
company benefits. Submit resume in con-
fidence with salary desired to:

BOX 524
KEARNY, N.J. 07032

HELP WANTED

PART TIME TELEPHONE SALES

Sell your #1 local newspaper.
Part-time evenings and Saturday morn-
ings. Guaranteed salary plus bonus.
Call 667-2100

Switchboard Operators

WE HAVE THE JOBS

Register now with the agency that
handles switchboard opera-
tors exclusively. Experienced
only. Work short or long assign-
ments in your area at excep-
tional pay.

SWITCHBOARD
TEMPORARIES
(6 PERMANENT POSITIONS)

742 Bergen Blvd.
Belleville, NJ
943-7400

HELP WANTED
The Eastman Chemical
Division of Eastman
Kodak Co. a major
manufacturer of
chemicals, plastic &
fibers, has a challenging
opportunity for a chemist
experienced in molecular
modeling. Individual
should have a M.S. in
chemistry. Knowledge of
protein & peptide struc-
ture, conformational
analysis, & modeling is
essential. Assignment in-
cludes conducting molec-
ular studies directed at
the design of molecules
which would be used to
effect animal production
growth.

The Eastman Chemical
division is headquartered
in Kingsport, Tennessee,
a progressive Tri-Cities
area of North East Ten-
nessee. Individual will
receive a salary com-
mensurate w/exp. &
qualification & an out-
standing employee ben-
efit program. Interested
candidates should send
resume to:

Cheryl Harvey
Personnel Dept.
Tennessee Eastman Co.
PO Box 1975
Kingsport, Tennessee 376
62 471-3600

Machine Operator; help-
ing in Silkscreen Dept.
Full time. Call 471-2800
Ext. 308

LABORERS FOR SER-
VICE CONTRACTOR TO
TRAIN & DEVELOP
INDIVIDUALS INTO WORK-
ING MEN. REQUIREMENTS
HAVE N.Y. DRIVING
LIC. & ABILITY TO
WORK WITH PHARMACEU-
TICALS. TRANS. LIBERAL
BENEFITS. APPLY AT
760 N. SUMMER AVE.
NEWARK, N.J. (BEL-
LEVILLE NWK LINE)
(Mary Ellen 483-9400)

RECEPTIONIST
PART TIME EVENING
WEEK-ENDS
Large Real Estate
Management firm is
seeking individual with
front office attitude to
assist in client service.
Clients Applicant should
have good typing/plac-
ing telephone man-
ner, willingness to accept
many diversified
duties, strong organiza-
tional ability. Previous
experience a must. Evening
hours 5:30 P.M. - week-
ends 9:30 P.M. For inter-
view call Lynne Tomen.
951-5500

govt realtors
727 Joralemon St.
Belleville

K.MART
Application applications for
full & part time posi-
tions. Mornings, after-
noons, evenings.
Outside maintenance,
check outs, auto &
sporting goods.

SEMI RETIRED OR RETIRED
FLEXIBLE HRS. AVAIL. IN OUR A.C.
PACKING DEPT. \$4.25 HR. STEADY
WORK. INTERVIEWS FRIDAY 4/5/85
10:30-3:30 EXECUTIVE COFFEE CO. 187
CORTLAND STREET, BELLEVILLE.

AUTOMOTIVE MACHINIST
Full time. Knowledge of drum turn-
ing, valve grinding, engine rebuilding helpful.
Will train energetic, willing to learn
person. Pleasant working conditions, well
lit shop, overtime. All benefits. Apply in
person.

SALLY'S AUTO PARTS
75 Franklin Avenue

DRIVER
Knowledge of New York City,
New Jersey and Long Island areas.
Office services required when not
driving. Liberal company benefits.

CALL PERSONNEL
997-3000

COMPUTER OPERATOR
Operate a large scale computer with
related duties. 2.5 years experience on
370/148 with 4341 on order/install Liberal
company benefits. Submit resume in con-
fidence with salary desired to:

BOX 524
KEARNY, N.J. 07032

Business Opportunities

OWN YOUR OWN
JEAN-SPORTSWEAR
LADIES APPAREL
CHILDREN'S LARGE
SIZE COMBINATION
WESTERN STORE AC-
CESSORIES, JOR-
DACHE, CHIC LEE,
LEVI, SEAN STREET,
IZOD, ESPRIT, TOM-
BOY, CALVIN KLEIN,
EVAN PICONE, LIZ
CLAIBORNE
RENTALS ONLY.
ORGANICALLY
GROWN, HEALTHY,
OVER 1000 OTHERS.
\$7,900 to \$24,900 INVEN-
TORY TRAINING, FIN-
ANCIAL, GRAND OPEN-
ING, ETC. CAN OPEN
15 DAYS MR. KEENAN
1-365 879-3639

SECURITY OPPORTUNITY
• To join America's
fastest growing quality
security organization
• Our starting rates are
the highest in the in-
dustry
• Our benefits are the
most comprehensive
• Our officers are truly
PROFESSIONALS

If you consider your-
self to be better than the rest
and are interested in join-
ing a quality organization
with tremendous ad-
vancement potential,
have a home phone, ve-
hicle & flawless work
record, then call 201-661-
4004 & let us try to want
to become a PROFS-
SIONAL.

WAREHOUSE WORKERS
25 NEEDED
Excellent Company
CALL

STAFF BUILDERS
TEMPORARY
PERMANENT
CLIFTON 472-7489
RUTHERFORD 933-0004
PARAMUS 946-6050

Secretaries
Typist
Word Processors
Clerical
General Labor
MUST HAVE CAR
Please call for Appt.

Manpower
Temporary
Services
746-5800
731-1013
EOE/MF

HELP WANTED
The Eastman Chemical
Division of Eastman
Kodak Co. a major
manufacturer of
chemicals, plastic &
fibers, has a challenging
opportunity for a chemist
experienced in molecular
modeling. Individual
should have a M.S. in
chemistry. Knowledge of
protein & peptide struc-
ture, conformational
analysis, & modeling is
essential. Assignment in-
cludes conducting molec-
ular studies directed at
the design of molecules
which would be used to
effect animal production
growth.

The Eastman Chemical
division is headquartered
in Kingsport, Tennessee,
a progressive Tri-Cities
area of North East Ten-
nessee. Individual will
receive a salary com-
mensurate w/exp. &
qualification & an out-
standing employee ben-
efit program. Interested
candidates should send
resume to:

Cheryl Harvey
Personnel Dept.
Tennessee Eastman Co.
PO Box 1975
Kingsport, Tennessee 376
62 471-3600

Machine Operator; help-
ing in Silkscreen Dept.
Full time. Call 471-2800
Ext. 308

LABORERS FOR SER-
VICE CONTRACTOR TO
TRAIN & DEVELOP
INDIVIDUALS INTO WORK-
ING MEN. REQUIREMENTS
HAVE N.Y. DRIVING
LIC. & ABILITY TO
WORK WITH PHARMACEU-
TICALS. TRANS. LIBERAL
BENEFITS. APPLY AT
760 N. SUMMER AVE.
NEWARK, N.J. (BEL-
LEVILLE NWK LINE)
(Mary Ellen 483-9400)

RECEPTIONIST
PART TIME EVENING
WEEK-ENDS
Large Real Estate
Management firm is
seeking individual with
front office attitude to
assist in client service.
Clients Applicant should
have good typing/plac-
ing telephone man-
ner, willingness to accept
many diversified
duties, strong organiza-
tional ability. Previous
experience a must. Evening
hours 5:30 P.M. - week-
ends 9:30 P.M. For inter-
view call Lynne Tomen.
951-5500

govt realtors
727 Joralemon St.
Belleville

K.MART
Application applications for
full & part time posi-
tions. Mornings, after-
noons, evenings.
Outside maintenance,
check outs, auto &
sporting goods.

SEMI RETIRED OR RETIRED
FLEXIBLE HRS. AVAIL. IN OUR A.C.
PACKING DEPT. \$4.25 HR. STEADY
WORK. INTERVIEWS FRIDAY 4/5/85
10:30-3:30 EXECUTIVE COFFEE CO. 187
CORTLAND STREET, BELLEVILLE.

AUTOMOTIVE MACHINIST
Full time. Knowledge of drum turn-
ing, valve grinding, engine rebuilding helpful.
Will train energetic, willing to learn
person. Pleasant working conditions, well
lit shop, overtime. All benefits. Apply in
person.

SALLY'S AUTO PARTS
75 Franklin Avenue

DRIVER
Knowledge of New York City,
New Jersey and Long Island areas.
Office services required when not
driving. Liberal company benefits.

CALL PERSONNEL
997-3000

COMPUTER OPERATOR
Operate a large scale computer with
related duties. 2.5 years experience on
370/148 with 4341 on order/install Liberal
company benefits. Submit resume in con-
fidence with salary desired to:

BOX 524
KEARNY, N.J. 07032

REAL ESTATE

FOR RENT

NUTLEY APTS
3 1/2 rms. Garden Apt. #495
incl. heat.
5 rms. 9600 incl. heat.
2 car garage. 2 bdrms.
3 mod rms. \$335 & incl.
4 rms. 3rd fl. #425 incl.
heat.

NUTLEY
HOUSE RENTAL
RANGING from 1 car
garage, w.w. carp. all ap-
pliances. \$750 & up.
Call Realtor

**NUTLEY STORE OF-
FICE**
\$300 each + util. Immed.
occup.

CENTRE REALTY
OF NUTLEY
Realtor 667-5100

BLOOMFIELD CENTRE
STORE OFFICE
900 sq. ft. Mod. H&HW.
A.C. Avail. May 1st. \$530.
Call Realtor

MARZULLI
264 Belleville Ave.
Bloomfield, NJ
Realtors 743-2306

UNION: HOUSE FOR
RENT. 2 bedroom Cape
and Nic. area. 4 car
garage. 3 mod rms. Call
667-3781 or 667-0483

BLOOMFIELD
2 mod rms. Basement
apt. (off. Broughton Ave.)
all util. incl. \$400. mo.
Call Realtor

NUTLEY
3 1/2 rms. 2nd fl. Prkg.
& 1 car garage. Call
Mike Pollard 338-3712

CAKE DECORATING
classes made easy by
Master's Cake Decorator
using the Wilton method.
Michael The Master
Cake Decorator
Call 667-2788 or 667-3341

METRO AGENCY
REALTOR 731-3400

APARTMENTS WANTED
ATTENTION LANDLORD!

We have many qualified tenants that are screened
and waiting for apartments or homes. You can
choose that special tenant at no cost to you. For
information call Tony Garofalo

MARZULLI REALTORS
264 Belleville Ave. Bloomfield, N.J.
743-2306

BLOOMFIELD
3 1/2 rms. luxury garden
Bath. \$600 per mo. incl.
heat, hot water, car-
peting & garage.

1 bdrm. garden apt. Avail.
6/1. \$525 incl. heat, hot
water, carpeting & gar-
age.

4 lg rms-parquet floors, mod.
\$476 & util. Avail. 5-1.

TO INSPECT CALL
Arthur L. Grutt, Realtor
GLENWOOD
Real Estate Agency
429-7380
905 BROAD ST., BLOOMFIELD

ESSEX COUNTRY
APTS AVAILABLE
ALL TYPES
& SIZES
CALL 429-9084
UNLIMITED

Bloomfield-3 1/2 large
rooms, ground floor,
bright, cheerful,
everything included \$480.
Near N.Y. bus line.
3 rms. \$4

REAL ESTATE REAL ESTATE REAL ESTATE REAL ESTATE REAL ESTATE REAL ESTATE REAL ESTATE REAL ESTATE REAL ESTATE REAL ESTATE

180 Centre St.
Nutley, N.J. 07110
667-3440

GEORGE E. MAC MUNN CO.

REALTORS

100 Woodport Road
Sparta, N.J. 07871
729-8727

Complimentary Certificate of Property Value

Would you like to know the market value of your home?
"Across town or across the nation, we're ready to help you buy or sell"

Upon presentation of this certificate to GEO. E. MACMUNN REALTORS, a professional, comprehensive, market analysis of your property will be prepared at no cost or obligation to you. This service will assist you in determining the current market value of your real estate properties for estate planning, insurance updating, or possible resale.

NAME

ADDRESS

PHONE

Please disregard this offer if your property is currently listed with a real estate broker; it is not our intention to solicit the offerings of other real estate brokers.

GEO. E. MAC MUNN CO.
REALTORS

NUTLEY
180 Centre Street
667-3440

SPARTA
100 Woodport Road
729-8727



ONE FLOOR LIVING w/rear deck and 3 bedrooms in NUTLEY - finished family room with extra 1/2 bath. ASKING \$109,000. YOUR OFFER MAY TAKE IT!!!



NUTLEY - ADORABLE 2 BEDROOM RANCH ON 50x120 lot overlooking PARK. Large Liv. Rm. with dining area, full basement, completely maint. free. JUST LISTED - CALL FOR DETAILS!!!

REAL ESTATE
FOR SALE

BLOOMFIELD TUDOR
Brookdale. New listing. Liv rm, din, rm, kit with breakfast nook, den and sunporch - 3 bdrms, tile bath, fin rec rm. Near N.Y. bus. Offered at \$185,000.
BELLEVILLE 2 FAM WITH EXTRA LOT
94 BELMONT AVE. 1st fl. Liv rm, kit, 2 bdrms, tile bath, 2nd fl. Liv rm, kit, 3 bdrms, mod bath. Extra lot 50x100 incl in price. Asking for package \$100,000.

BROOKDALE CUSTOM SPLIT LEVEL
Call to inspect this lovely brick 4-slm. Split on huge 80x171 landscaped lot with fruit trees. 1g liv rm with fpl, din rm, extra lg tile kit, 3 bdrms, 1 1/2 baths. New York bus at door. Perfect for a professional. Offered at \$285,000.
BLOOMFIELD DUPLEX-TOWN HOUSE
Liv rm, mod eat-in kit, 2 bdrms, 1 1/2 baths, full front, gas heat. Great starter home. Asking only \$97,900.

TO INSPECT CALL
Arthur L. Grutt, Realtor
GLENWOOD Real Estate Agency
429-7380
905 BROAD ST., BLOOMFIELD

WHAT IS YOUR OFFER?
OWNER WILL LISTEN
1/2 BRICK COLONIAL MUST BE SOLD
3 large bedrooms & bath on 2nd floor. Full bath on 1st. Modern kitchen, spacious living room. Many extra features. One block to New York bus, shopping & grade school.

DO YOU KNOW THE MARKET VALUE OF YOUR HOME?
CALL US FOR OUR OPINION WITHOUT COST OR OBLIGATION TO LIST OR SELL
EVERYONE KNOWS
GEORGE T. BOWES
YOUR NUTLEY REALTOR SINCE 1933
581 FRANKLIN AVE., NUTLEY 667-3376

HAPPY Easter



Century 21 WAYNE K. THOMAS REALTORS
277 Broad Street Bloomfield, New Jersey
(201) 429-7400
"Each office independently owned and operated."
MEMBER OF BLOOMFIELD GLEN RIDGE, NUTLEY, BELLEVILLE BOARD OF REALTORS

SHERIFF'S SALE
SUPERIOR (CHAN) C-431
SUPERIOR COURT OF NEW JERSEY, CHANCERY DIVISION, ESSEX COUNTY, DOCKET NO. F-5113-84. THE NATIONAL STATE BANK, PLAINTIFF vs. JAMES R. BYRD, JR., et al., DEFENDANTS. Execution For Sale of Mortgaged Premises.
By virtue of the above stated writ of Execution, to me directed, I shall expose for sale by Public Auction, in SHERIFF'S OFFICE, Essex County Court Building in Newark, on Tuesday, the 23rd day of April next, at one-thirty P.M., (Prevaling Time).
The property to be sold is located in the City of East Orange, County of Essex and State of New Jersey.
Premises is known as: 87 Rhode Island Ave., Apt's File #6638.
Tax Lot #22, Block #444A.
Approx. Dimensions: 25 x 100
Nearest Cross Street: Oak Street
A complete description can be found in the Essex County Register's Office.
The approximate amount of the Judgment to be satisfied by said sale is the sum of FORTY FIVE THOUSAND THREE HUNDRED SIXTY SEVEN DOLLARS AND ONE CENT (\$45,367.01), together with the costs of this sale.
The Sheriff reserves the right to adjourn the sale from time to time as provided by Law.
THOMAS J. DALESIO, Sheriff
Edward Castel, Attorney
The Belleville Times
Mar. 14, 21, 28.
Apr. 4, 1985
Fee: \$71.44 No. 8085-12

SHERIFF'S SALE
SUPERIOR (CHAN) C-437
SUPERIOR COURT OF NEW JERSEY, CHANCERY DIVISION, ESSEX COUNTY, DOCKET NO. F-6150-83. NEW JERSEY MORTGAGE FINANCE AGENCY, PLAINTIFF vs. WILLIAM J. STEWARD, Single, MOSS FURNITURE CO., DEFENDANTS. Execution For Sale of Mortgaged Premises.
By virtue of the above stated writ of Execution, to me directed, I shall expose for sale by Public Auction, in SHERIFF'S OFFICE, Essex County Court Building in Newark, on Tuesday, the 23rd day of April next, at one-thirty P.M., (Prevaling Time).
The property to be sold is located in the City of East Orange, County of Essex and State of New Jersey.
Tax Lot & Block No. Lot 7A, Block 74 on the Tax Map of East Orange.
Property Dimensions: Approximately 37.50 x 100
Located approximately 325 feet from the nearest intersecting street, Elmwood Avenue.
A complete description can be found in the Essex County Register's Office.
The approximate amount of the Judgment to be satisfied by said sale is the sum of FORTY THOUSAND TWO HUNDRED SIXTY FIVE DOLLARS AND FIFTY TWO CENTS (\$40,265.32), together with the costs of this sale.
The Sheriff reserves the right to adjourn the sale from time to time as provided by Law.
THOMAS J. DALESIO, Sheriff
Tanner, McGovern & Vargo, Attorneys
The Bloomfield Life
Mar. 28.
Apr. 4, 11, 18, 1985
Fee: \$73.32 No. 8085-13

(Second Reading)
PUBLIC NOTICE is hereby given that the following Ordinance was passed on second and final reading at a meeting of the Board of Commissioners of the Township of Belleville, held on Tuesday evening, March 26, 1985 having been read in its final form of at least one week prior thereto and is herefore now a law and hereby published according to law.
Comm. Ralph DiGiuseppe Yes
Comm. Joseph A. Grande Yes
Comm. Michael P. Pizzi Yes
Mayor Michael V. Marzulli Yes
Passed First Reading, March 12, 1985
Passed Second Reading, March 26, 1985
Adopted: March 26, 1985
Attest: Mary Lou Hood, Township Clerk
BOND ORDINANCE PROVIDING FOR THE ACQUISITION AND INSTALLATION OF A NEW COMPUTER SYSTEM FOR AND BY THE TOWNSHIP OF BELLEVILLE, IN THE COUNTY OF ESSEX, NEW JERSEY, APPROPRIATING \$220,000 THEREOF AND AUTHORIZING THE ISSUANCE OF \$238,000 BONDS OR NOTES OF THE TOWNSHIP FOR FINANCING PART OF THE COST THEREOF.
BE IT ORDAINED BY THE BOARD OF COMMISSIONERS OF THE TOWNSHIP OF BELLEVILLE, NEW JERSEY:
[Not less than two-thirds of all members thereof affirmatively concurring]
Section 1. The improvement described in Section 3 of this bond ordinance is hereby authorized to be undertaken by the Township of Belleville, New Jersey as a general improvement. For the improvement or purpose described in Section 3, there is hereby appropriated the sum of \$220,000, including the sum of \$12,000 on the down payment required by the Local Bond Law. The down payment is now available by virtue of provision for down payment or for capital improvement purposes, in one or more previously adopted budgets.
Section 2. In order to finance the cost of the improvement or purpose not covered by the principal amount of \$208,000 pursuant to the application of the down payment, negotiable bonds are hereby authorized to be issued in the principal amount of \$238,000 pursuant to the Local Bond Law. In anticipation of the issuance of the bonds, negotiable bond anticipation notes are hereby authorized to be issued pursuant to and within the limitations prescribed by the Local Bond Law.
Section 3. (a) The improvement or purpose authorized and purpose for the financing of which the bonds are to be issued is the acquisition and installation of a new computer system for the servicing of all municipal departments except the fire department, acquisition and installation of all materials, equipment and furnishings necessary hereafter or incidental thereto and all work related thereto.
(b) The estimated maximum amount of bonds or notes to be issued for the improvement or purpose is \$238,000.
(c) The purpose of the bonds and notes authorized is to finance commitments that may be incurred by the Township of Belleville pursuant to the Local Bond Law.
Section 4. All bond anticipation notes issued hereunder shall mature at such times or may be determined by the chief financial officer; provided that no late financial liability later than one year from the date of adoption of this bond ordinance.
Section 5. (a) The interest rate or rates on such bonds or notes shall be as determined by the chief financial officer; provided that no late financial liability later than one year from the date of adoption of this bond ordinance, and the chief

LIST YOUR HOME WITH US.

We can help you get the most money

WE GET RESULTS Here's Why:

- 3,000 potential prospects in our file.
- Area leader in home sales.
- Experienced specialists ready to sell your home.
- Free Home Warranty Protection plan.
- Relocation service.
- Financing to help you qualify buyer.
- Member Multiple Listing Service.

WANT TO KNOW WHAT YOUR HOME IS WORTH?
Call Us Today for a
FREE EVALUATION

govel REALTORS (201) 751-7500
727 Joramelon Street
Belleville, N.J.



financial officer's signature upon the notes shall be complete evidence as to all such determinations. All notes issued hereunder may be renewed from time to time subject to the provisions of N.J.S.A. 40A:2-8(a). The chief financial officer is hereby authorized to sell or all of the notes from time to time of public or private sale and to deliver them to the purchasers thereof upon receipt of payment of the purchase price plus accrued interest from their dates of issue to the date of payment. The chief financial officer is directed to report in writing to the governing body of the township meeting next succeeding the date when any sale or delivery of the notes pursuant to this ordinance is made such of the following: (a) the amount, the description, the interest rate and the maturity schedule of the notes sold; the price obtained and the name of the purchaser.
Section 5. The following additional matters are hereby determined, declared, recited and stated:
(a) The said purpose described in Section 3 of this bond ordinance is not a current expense and is a property or improvement which the Township may lawfully acquire or make as a general improvement, and no part of the cost thereof has been or shall be specially assessed on property or specially benefited thereby.
(b) The said purpose described in Section 3 of this bond ordinance is a public use and is within the limitations of said Local Bond Law, according to the reasonable use thereof computed from the date of the said bonds authorized by this bond ordinance, is 15 years.
(c) The supplemental debt statement required by said Law has been duly made and filed in the office of the Township Clerk and a complete certified duplicate thereof has been filed in the office of the Director of the Division of Local Government in the Department of Community Affairs of the State of New Jersey, and such statement shows that the said bonds are hereby authorized to be issued in the amount of \$238,000, and the said obligations authorized by this bond ordinance are within all debt limitations prescribed by said Law.
(d) An aggregate amount not exceeding \$25,000 for interest on said obligations, costs of issuing said obligations, and other items of expense listed in and permitted under Section 40A:20-2 of said Law may be included as part of the cost of said improvement and is included in the foregoing estimate thereof.
Section 6. The capital budget of the Township is hereby amended to conform with the provisions of this ordinance to the extent of any inconsistencies herein.
Section 7. The full faith and credit of the Township are hereby pledged to the punctual payment of the principal and interest on the said obligations authorized by this bond ordinance. Said obligations shall be direct, unsecured obligations of the Township, and the Township shall be obligated to levy the same upon taxes upon all the taxable property within the Township for the payment of said obligations and interest thereon without limitation of rate or amount.
Section 8. This bond ordinance shall take effect twenty (20) days after the first publication thereof after final adoption, as provided by said Local Bond Law.
The bond ordinance published herewith has been lawfully adopted and the 20-day period of limitation within which a suit, action or proceeding questioning the validity of such or-

dinance can be commenced, as provided in the Local Bond Law has begun to run from the date of the first publication of this statement.
Mary Lou Hood, Township Clerk
The Belleville Times
Apr. 4, 1985
Fee: \$77.55 No. 885-136

SHERIFF'S SALE
SUPERIOR (LAW) G-92
SUPERIOR COURT OF NEW JERSEY, LAW DIVISION, ESSEX COUNTY, DOCKET NOS. L-073633-84, J-376-85, ROBERT F. FISH and YEDASIRI, PLAINTIFFS vs. JOHN FREGANZ, CHRISTINE FREGANZ and MARC REAL ESTATE INVESTMENT CORPORATION, DEFENDANTS. Execution.
By virtue of the above stated writ of Execution, to me directed, I shall expose for sale by Public Auction, in SHERIFF'S OFFICE, Essex County Court Building in Newark, on Tuesday, the 30th day of April next, at one-thirty P.M., (Prevaling Time) all the right, title and interest of the above named Defendant, Marc Real Estate Investment Corporation in and to ALL that tract or parcel of land and premises located in the City of East Orange, County of Essex and State of New Jersey, more particularly described as follows:
The Property includes: (a) the land; (b) all buildings that are now, or will be located on the land; (c) all fixtures that are now, or will be attached to the land or building(s) (for example: furnaces, bathroom fixtures and kitchen cabinets); (d) all condemnation awards and insurance proceeds relating to the land and building(s); and (e) all other rights that I have, or will have, as owner of the Property. The legal description of the Property is:
BEGINNING in the westerly line of North Walnut Street 138 feet northerly from the intersection of the said westerly line of North Walnut Street and the northerly line of Williams Street; thence (1) north 57 degrees 11 minutes 30 seconds west 152.15 feet; thence (2) north 27 degrees 42 minutes west 43.2 feet; thence (3) north 37 degrees 37 minutes east 75.59 feet; (4) south 53 degrees 25 minutes east 200 feet to the said westerly line of North Walnut Street; thence (5) south 37 degrees 37 minutes west 52 feet to the point and place of BEGINNING.
BEING known as and by street #83 North Walnut Street, East Orange, New Jersey.
BEING ALSO KNOWN AND DESIGNATED AS Lot 7, Block #333.
The approximate amount of the Judgment to be satisfied by said sale is the sum of ONE HUNDRED FORTY-NINE THOUSAND TWO HUNDRED SIXTY-EIGHT DOLLARS AND FIFTY-SIX CENTS (\$149,268.56), together with the costs of this sale.
The Sheriff reserves the right to adjourn the sale from time to time as provided by Law.
Newark, N.J. March 25, 1985
Attest: **THOMAS J. DALESIO, Sheriff**
Slavitt, Fish & Cowen, Attorneys
The Belleville Times
Apr. 4, 11, 18, 25, 1985
Fee: \$118.44 No. 885-130

SHERIFF'S SALE
SUPERIOR (CHAN) C-411
SUPERIOR COURT OF NEW JERSEY, CHANCERY DIVISION, ESSEX COUNTY, DOCKET NO. F-6773-84. MARGARETTEN & COMPANY, INC., a New Jersey Corporation, PLAINTIFF vs. RICHARD F. FRANK, et al., DEFENDANTS. Execution For Sale of Mortgaged Premises.
By virtue of the above stated writ of Execution, to me directed, I shall expose for sale by Public Auction, in SHERIFF'S OFFICE, Essex County Court Building in Newark, on Tuesday, the 9th day of April next, at one-thirty P.M., (Prevaling Time).
The property to be sold is located in the City of Newark in the County of Essex, and State of New Jersey.
Commonly known as: 64 Valley Street, Newark, New Jersey.
Tax Lot No. 61 in Block No. 4075.
Dimension of Lot (Approximately) 37 feet wide by 100 feet long.
Nearest Cross Street: Situate on the southerly side of Valley Street, 299 feet from the easterly side of Sylvan Avenue.
A full legal description is available in the Office of the Register of Essex County.
The approximate amount of the Judgment to be satisfied by said sale is the sum of THIRTY THOUSAND FOUR HUNDRED THIRTY-FOUR DOLLARS AND NINETEEN CENTS (\$34,434.19), together with the costs of this sale.
The Sheriff reserves the right to adjourn the sale from time to time as provided by Law.
Newark, N.J. March 4, 1985
THOMAS J. DALESIO, Sheriff
Zucker, Goldberg, Becker & Anderson, Attorneys
The Belleville Times
Mar. 14, 21, 28.
Apr. 4, 1985
Fee: \$82.72 No. 885-102

SHERIFF'S SALE
SUPERIOR (CHAN) C-414
SUPERIOR COURT OF NEW JERSEY, CHANCERY DIVISION, ESSEX COUNTY, DOCKET NO. F-5307-84. TALAMAN HOUSING FEDERAL SAVINGS ASSOCIATION OF IL., UNOS, PLAINTIFF vs. ESTEBAN BALZON, et al., et al., DEFENDANTS. Execution For Sale of Mortgaged Premises.
By virtue of the above stated writ of Execution, to me directed, I shall expose for sale by Public Auction, in SHERIFF'S OFFICE, Essex County Court Building in Newark, on Tuesday, the 9th day of April next, at one-thirty P.M., (Prevaling Time).
The property to be sold is located in the City of Newark, County of Essex and State of New

PUBLIC NOTICE
The Belleville Board of Education will hold its Annual Organization Meeting at 8:00 p.m. on Monday, April 8, 1985, at the Board of Education Complex, 190 Corliss Street, Belleville.
Indifferently following the Organization Meeting, the Board will meet in private executive session, after which a Special Public Business Meeting will be held at which official action will be taken for the selection of an administrator for the Saturday Academically Talented Program.
Edward J. Appleton
Acting Board Secretary/
School Business Administrator
The Belleville Times
Apr. 4, 1985
Fee: \$7.32 No. 885-132

NOTICE OF DECISION
BELLEVILLE PLANNING BOARD
A special meeting of the Belleville Planning Board was held on March 27, 1985. At the meeting, the Board reconsidered their decision and approved, with conditions, application #2853 of Carme P. Esposito for rezoning of Lots 11 and 12 in Block 72.
COSMO P. ESPOSITO
Applicant
The Belleville Times
Apr. 4, 1985
Fee: \$4.70 No. 885-134



Fresh From ShopRite...For Your Holiday Dinner

All of us at ShopRite Wish You A Holiday of Joy and Inspiration

The Produce Place

FRESH CALIFORNIA

Iceberg Lettuce

large head

.49

RED RIPE LUSCIOUS

California Strawberries

1-dry pint

.89

IMPORTED BLACK OR

Seedless Grapes lb. **.99**

LARGE 88 SIZE IMPORTED

Jaffa Oranges 5 for **.99**

IMPORTED

Bartlett Pears lb. **.69**

LARGE 32 SIZE, FLORIDA WHITE

Seedless Grapefruit 3 for **.89**

PASSOVER & EASTER

Holiday Traditional Favorites

WITH OR WITHOUT TOPS

Fresh Horseradish lb. **1.69**

DELICIOUS

Fresh Soup Mix 1-lb. **.99**

DELICIOUS IN STEWS, FRESH

Bunch Carrots bch. **.59**

DICE & SERVE HOT WITH BUTTER

Fresh Bunch Beets bch. **.79**

The Fish Market

U.S. GRADE A FRESH (BOSTON BLUE)

Pollock Fillet* lb. **1.69**

U.S. GRADE A SWEET & TENDER

Fresh Small Scallops* lb. **3.39**

CUT FROM U.S. GRADE A, NEW ENGLAND

Fresh Codfish Steaks* lb. **2.29**

PREVIOUSLY FROZEN, STORE SLICED

Swordfish Steak lb. **4.99**

INDIV. QUICK FROZEN, PEELLED & CLEANED

Salad Shrimp 16-oz. **2.79**

FROZEN NO MAI

Shrimp Egg Roll **FREE**

FROZEN & THAWED, \$1.35 PER LB.

Large Shrimp lb. **4.99**

The Dairy Place

PART SKIM OR WHOLE MILK

ShopRite Ricotta 3-lb. **2.99**

PART SKIM OR WHOLE MILK

ShopRite Mozzarella 1-lb. **1.99**

WHY PAY MORE?

ShopRite Sour Cream 1-qt. **.69**

ShopRite Cream Cheese 8-oz. **.79**

The Deli Place

Polish Imported Canned Ham 3-lb. **6.99**

WHY PAY MORE?

Dak Uncanned Ham 3-lb. **7.99**

MILD OR TANGY

ShopRite Pork Roll 1 1/2-lb. **2.99**

WILSON CORN KING OR JOHN MORRELL

Canned Ham 5-lb. **7.99**

The Appy Place

WHY PAY MORE?

Store Sliced Virginia Ham lb. **2.79**

ARMOUR

Easter Kielbasa lb. **1.59**

HORMEL N.C. DILUSO

Genoa Salami 1/4-lb. **.99**

STORE SLICED

Prosciutto lb. **5.99**

ShopRite Coupon

WITH THIS COUPON ONE (1) 1/2 GAL. BTL. OF

Red Cheek Apple Juice

.99

Coupon good at any ShopRite Market. Limit one per family. Effective Sun. Mar. 31 thru Sat. Apr. 6, 1985.

SAVE .30

The Plant Place WHERE AVAILABLE

IN FLORIST GIFT BOX

Orchid Corsages each **1.79**

TIP QUALITY

Florist Gift Mums each **5.99**

The Grocery Place

PLUS DEP. WHERE REQUIRED REGULAR OR CAFFEINE FREE

Diet Coke, Coke or Tab

2-ltr. **.99**

ALL VAR. EX. ANGEL FOOD

Duncan Hines Cake Mixes 1-lb. 2 1/2-oz. box **.69**

SPAGHETTI, APPELLINI, ELBOWS, RIGATONI, TUBETTINI, LINGUINE OR SIN D MELON

D'Amelia Pasta 3-lb. **1.00**

ShopRite

Cranberry Sauce 1-lb. can **.39**

REGULAR OR UNBLEACHED

Gold Medal Flour 5-lb. bag **.69**

RED CHEEK, CLEAR OR NATURAL

Apple Juice 1/2-gal. **1.29**

INSTANT

Maxwell House Coffee 8-oz. jar **3.59**

PLUS DEP. WHERE REQ.

Reg. or Diet 7-Up 2-ltr. **1.19**

IN LIGHT SYRUP, SLICED CLING

Farm Flavor Peaches 12-oz. can **.79**

IN SYRUP OR JUICE

Dole Pineapple 1-lb. 4-oz. can **.79**

FOR SALADS, ALL VARIETIES

Pfeiffer's Dressing 1-qt. **.99**

WHY PAY MORE?

Mazola Corn Oil 1-gal. **5.49**

General Merchandise

3-YR. WARRANTY

32-Gallon Trash Can **6.99**

52 MFG. REBATE AVAILABLE. FINAL COST \$4.99.

10W40

Citgo Motor Oil 1-qt. **.89**

JVC-T20

Video Cassettes each **4.99**

ShopRite Coupon

WITH THIS COUPON ONE (1) 1/2 PK. 7.02 OZ. TN. REGULAR, DIET OR

Caffeine Free C&C Cola

.79

Coupon good at any ShopRite Market. Limit one per family. Effective Sun. Mar. 31 thru Sat. Apr. 6, 1985.

SAVE .20

The MEATing® Place

THORN APPLE VALLEY WATER ADDED

Shank Portion Smoked Hams

lb. **.97**

THORN APPLE VALLEY

Butt Portion Smoked Ham WATER ADDED lb. **1.17**

THORN APPLE VALLEY, FULL CUT

Shank Half Smoked Ham WATER ADDED lb. **1.17**

THORN APPLE VALLEY, FULL CUT

Butt Half Smoked Ham WATER ADDED lb. **1.37**

THORN APPLE VALLEY SMOKED, WATER ADDED

Center Cut Ham Slices lb. **1.87**

LIPARIS HOT OR SWEET PORK (ANY SIZE PKG.)

Italian Style Sausage lb. **1.49**

LOIN PORTION, 9-11 CHOPS

Pork Chop Combo lb. **1.59**

RIB CUT

Center Cut Pork Chops lb. **1.99**

MEATY RIB PORTION

Pork Loin for BBQ lb. **1.59**

ShopRite ALL NATURAL, 10-14 LBS.

Fresh Turkeys lb. **.77**

FROZEN 10-14 LBS.

Butterball Turkeys lb. **.87**

THE PERFECT OVEN ROASTER

Holly Farms Fresh Roaster

5-6 LBS. AVG.

lb. **.57**

U.S.D.A. CHOICE BEEF

Top Round London Broil USDA CHOICE lb. **1.97**

U.S.D.A. CHOICE BEEF

Boneless Top Round Roast USDA CHOICE lb. **1.87**

NEW ZEALAND, FROZEN

Oven Ready Leg of Lamb lb. **1.27**

DELICIOUS THIN CUT

Fresh Beef Brisket 1-qt. **1.97**

ANY SIZE PKG., NOT LESS THAN 85%

Ex. Lean Ground Beef lb. **1.89**

U.S.D.A. CHOICE BONELESS BEEF

Bottom Round Roast 12-oz. **1.87**

U.S.D.A. CHOICE BEEF

Boneless Rump Roast lb. **2.07**

BONELESS BEEF WITH BOTTOM ATTACHED

Eye Round Roast 12-oz. **2.17**

SWIFT'S FROZEN WHITE & DARK, 2-4 LB. AVG.

Boneless Turkey lb. **1.79**

OLDE VIRGINIE FROZEN (FOR STUFFING)

Pork Sausage Meat lb. **.99**

For Your Passover Table

WHY PAY MORE?

Aviv, Yehuda or Rishon Matzo 5-lb. box **3.99**

MRS. ADLER'S OLD JERUSALEM

Gefilte Fish 1-lb. 8-oz. jar **1.69**

WHY PAY MORE?

Mrs. Adler's Borscht 1-qt. **.69**

MRS. ADLER'S

White & Pike Fish 1-lb. 8-oz. jar **1.89**

MANISCHWITZ, HOROWITZ, GOODMAN'S OR

Streits Matzo 5-lb. box **5.99**

MANISCHWITZ, HOROWITZ, GOODMAN'S OR

Streits Egg Matzo 12-oz. box **1.39**

MANISCHWITZ, MOTHER'S OR ROSEACH REGULAR

Gefilte Fish 1-lb. 8-oz. jars or cans **2.49**

IN SHELL

Diamond Walnuts 1-lb. **.99**

ShopRite ROASTER BAKER OR LASAGNA PANS

Foil Bakeware 2-pc. **3.00**

GORBLIT (10 1/2 OZ. WINE 8 1/2 OZ.) OR CHAMPAGNE (10 OZ.)

Diamond Glasses 3 for **2.00**

The Frozen Food Place

The Family Pharmacy Dept.

CALL US AT 235-0821

SENIOR CITIZEN DISCOUNT POLICY

Sixty-Two or older? You are welcome to save a full 10% Off our regular Low Prescription prices. No involved applications to fill out. Simply present proof of age and we will immediately issue a Golden Age Discount Card that can be used with your first purchase.

This card is for prescription purposes only and is not applicable to P.A.A. or Third Party Prescriptions.

<p>Answer 2 At-Home Early Pregnancy Test Kit (contains 2 Complete Tests)</p> <p>\$8.99</p> <p>-1.00-mfg. rebate</p> <p>7.99-your cost after rebate</p>	<p>B-D Autolance Device</p> <p>\$8.99</p> <p>-4.00-mfg. rebate</p> <p>-4.99-your cost after rebate</p>
<p>Early Detector In-Home Test To Detect Blood in Stool</p> <p>\$4.99</p> <p>-2.00-mfg. rebate</p> <p>2.99-your cost after rebate</p>	<p>B-D Lancets \$4.99</p>
<p>Sharp Digital Fever Thermometer \$7.99</p>	<p>Bristoline Manual Blood Pressure Kit #1535 \$10.99</p> <p>Visidex II \$12.99</p> <p>Tes-Tape \$4.59</p>

Expires April 13, 1985

See The High Quality Our Low Prices Can Buy!

In order to assure a sufficient supply of sales items for all our customers, we must reserve the right to limit the purchase to units of 4 of any sales items, except where otherwise noted. Not responsible for typographical errors. Prices effective Sun. Mar. 31 thru Sat. Apr. 6, 1985. None sold to other retailers or wholesalers. Artwork does not necessarily represent item on sale, it is for display purposes only. Copyright WAKEFERN FOOD CORPORATION 1985.